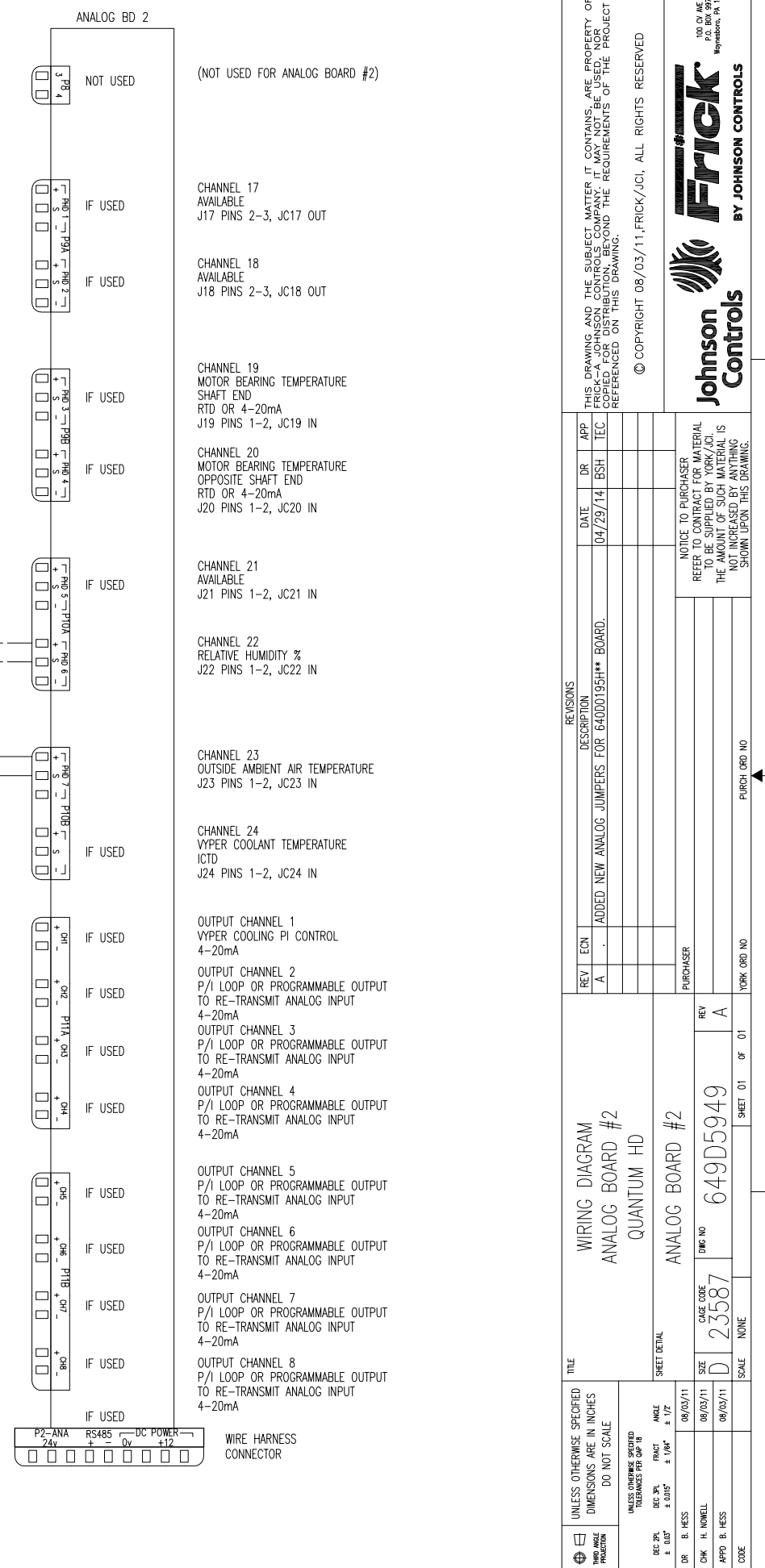
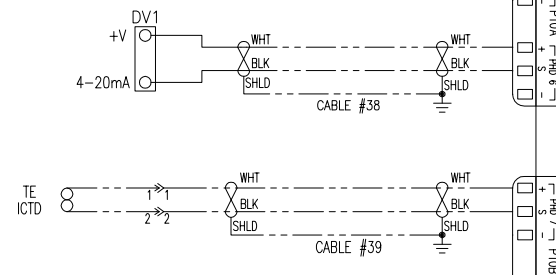


**JUMPERS J\*\* & JC\*\* ARE FOR 640D0195H\*\* ANALOG BOARDS.**

**NOTE 1**  
 ALL ANALOG LOW VOLTAGE WIRING TO BE RUN IN SEPARATE CONDUIT FROM ALL OTHER WIRING. ALL DRAIN WIRES TO BE INSULATED EITHER TOGETHER OR SEPARATELY WITHIN 2" OR CLOSER OF TERMINATION IF NOT CONFINED OTHERWISE.

**NOTE 2**  
 TEMPERATURE WIRING SPECIFICATIONS:  
 MINIMUM CABLE SIZE FOR SENSOR WIRING TO BE 22 AWG, TWISTED PAIR - BELDEN #9320 OR EQUAL, 20/2 TWISTED PAIR SUGGESTED  
 -IF CABLE HAS A DRAIN WIRE, GROUND DRAIN WIRE AT ONE END ONLY AND INSULATE OTHER END. 2000 FT. MAX. DISTANCE

**NOTE 3**  
 SPECIFICATIONS FOR TEMPERATURE CAPACITY CONTROL:  
 -SETPOINT RANGE: -50°F. TO 100°F.  
 -TEMPERATURE ASSEMBLY FOR NON-HAZARDOUS LOCATION (FRICK P/N 639A0151G03 WITH 1/2"NPT OR 639A0151G02 FOR CABLE STRAIN RELIEF)  
 -WIRE AS SHOWN IN SEPARATE CONDUIT FROM ALL OTHER WIRING, USE BELDEN #8761 CABLE OR EQUAL



REV	ECN	DATE	DESCRIPTION	REV	ECN	DATE	DESCRIPTION
A		04/29/14	ADDED NEW ANALOG JUMPERS FOR 640D0195H** BOARD.	A		08/03/11	

UNLESS OTHERWISE SPECIFIED DIMENSIONS ARE IN INCHES DO NOT SCALE

UNLESS OTHERWISE SPECIFIED DIMENSIONS ARE IN INCHES DO NOT SCALE

DR: B. HESS  
 CHK: H. NOWELL  
 APP'D: B. HESS

SIZE: D  
 DWG NO: 649D5949  
 SHEET 01 OF 01

WIRING DIAGRAM ANALOG BOARD #2  
 QUANTUM HD ANALOG BOARD #2

THIS DRAWING AND THE SUBJECT MATTER IT CONTAINS ARE PROPERTY OF FRICK JOHNSON CONTROLS COMPANY. IT MAY NOT BE REPRODUCED, COPIED, FOR DISTRIBUTION, BEYOND THE REQUIREMENTS OF THE PROJECT REFERENCED ON THIS DRAWING.  
 © COPYRIGHT 08/03/11, FRICK/JCI. ALL RIGHTS RESERVED

**Frick**  
 BY JOHNSON CONTROLS