

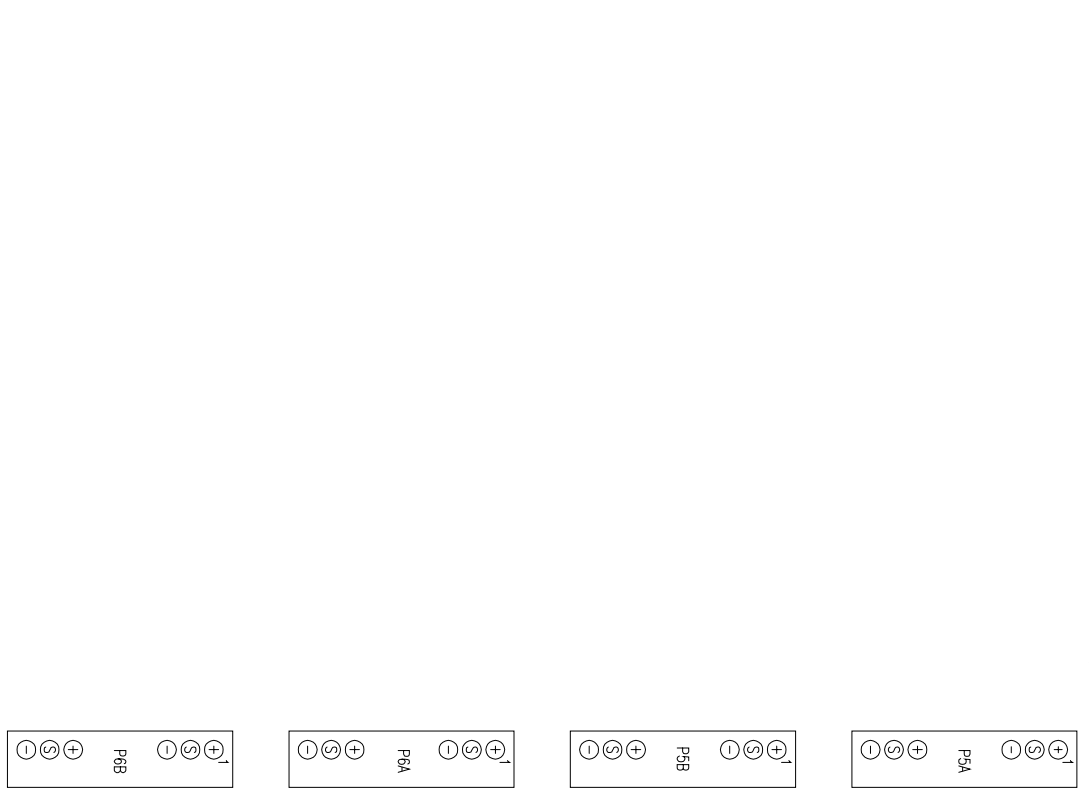
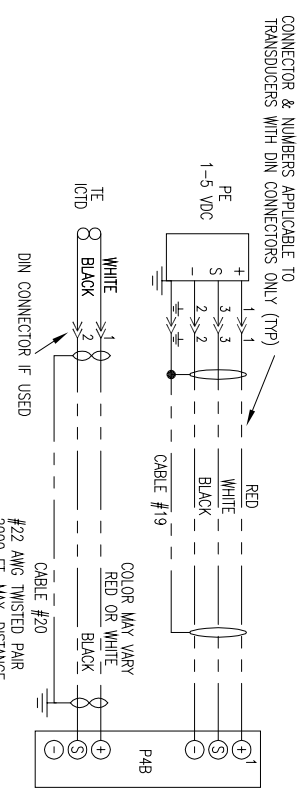
ANALOG BOARD #2
POS 1 OF SW1 ON ANALOG BOARD MUST BE SET TO ON*

ZONE	REV	ECN	DESCRIPTION	DATE	DR	CHK	APPD
A	.	.	REV'D ANALOG OUTPUTS	02-21-06	HEN	DEL	HEN
B	.	.	REMOVE COND. ANA. OUTPUT, ADD TO MAIN 1	01-13-06	HEN	JML	JML
C	.	.	GENERALS REFS TO NOTES, ADD CE	07-12-07	HEN	JML	JML

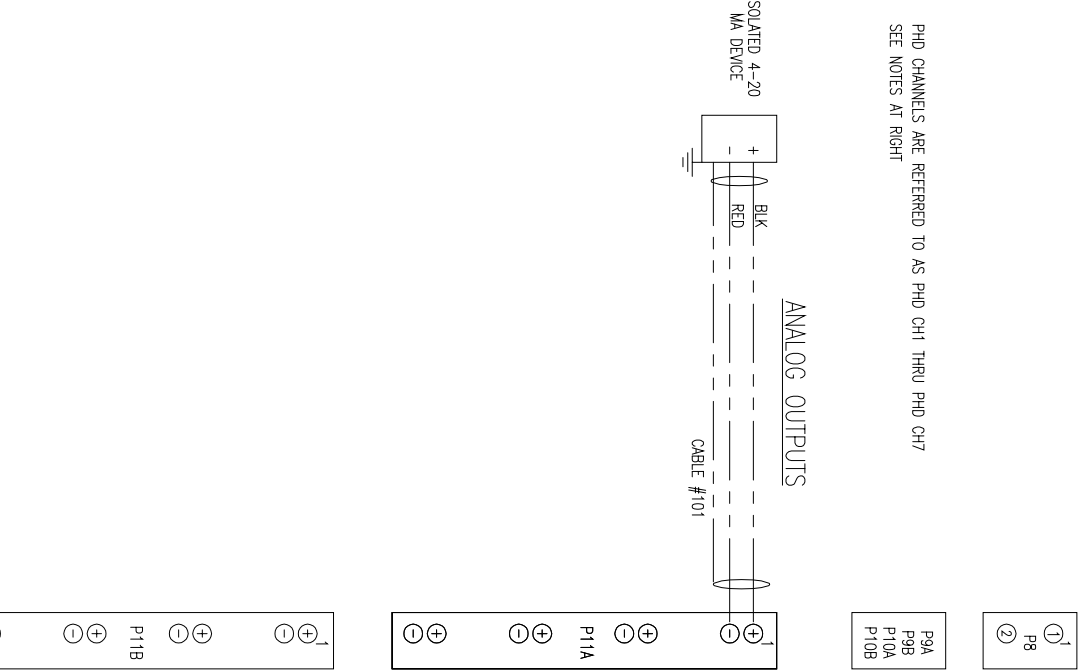
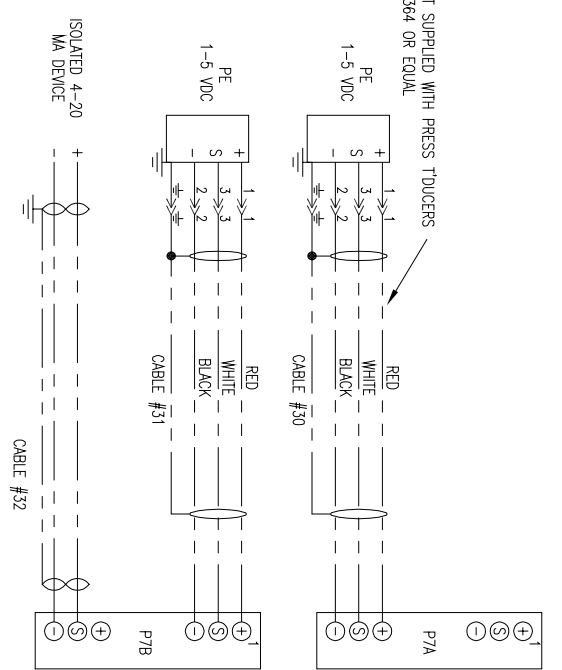
NOTE 1
ALL ANALOG LOW VOLTAGE WIRING TO BE RUN IN SEPARATE CONDUIT FROM ALL OTHER WIRING. ALL DRAIN WIRES TO BE INSULATED EITHER TOGETHER OR SEPARATELY WITHIN 2" OR CLOSER OF TERMINATION IF NOT COMPLETED OTHERWISE.

NOTE 2
TEMPERATURE WIRING SPECIFICATIONS:
MINIMUM CABLE SIZE FOR SENSOR WIRING TO BE 22 AWG TWISTED PAIR - BELDEN #9370 OR EQUAL, 20/2 TWISTED PAIR SUGGESTED - IF CABLE HAS A DRAIN WIRE, GROUND DRAIN WIRE AT ONE END ONLY AND INSULATE OTHER END. 2000 FT. MAX. DISTANCE

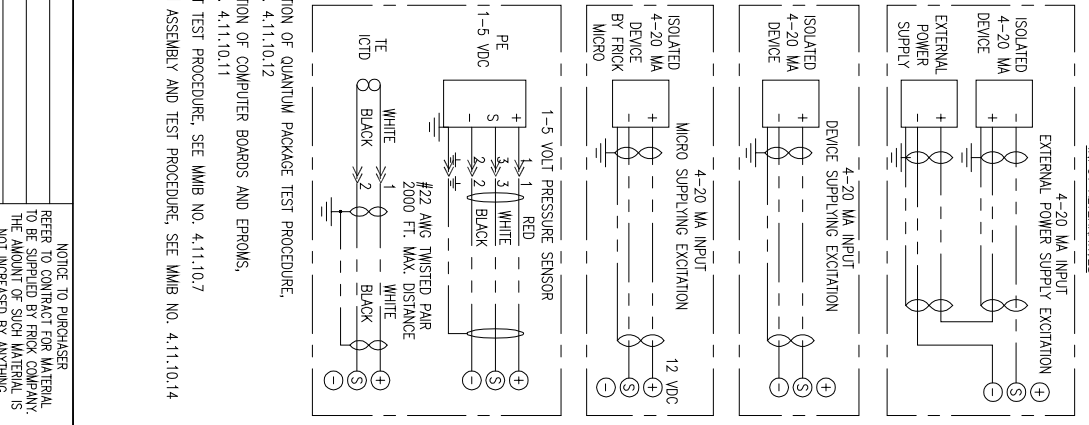
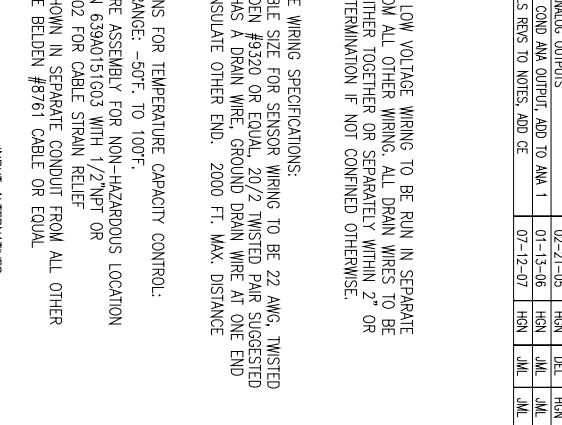
NOTE 3
SPECIFICATIONS FOR TEMPERATURE CAPACITY CONTROL:
-SETPOINT RANGE: -50°F. TO 100°F.
-TEMPERATURE ASSEMBLY FOR NON-HAZARDOUS LOCATION (FRICK P/N 63940151603 WITH 1/2" NPT OR 63940151602 FOR CABLE STRAIN RELIEF
-WIRE AS SHOWN IN SEPARATE CONDUIT FROM ALL OTHER WIRING, USE BELDEN #8761 CABLE OR EQUAL



41	CHANNEL 1 FUTURE ICD	42	CHANNEL 2 FUTURE ICD	43	CHANNEL 3 ENGINE MANIFOLD PRESSURE DRIVE ONLY	44	CHANNEL 4 ENTERING PROCESS TEMP	45	CHANNEL 5 ANALOG AUXILIARY #1	46	CHANNEL 6 ANALOG AUXILIARY #2	47	CHANNEL 7 ANALOG AUXILIARY #3	48	CHANNEL 8 ANALOG AUXILIARY #4	49	CHANNEL 9 ANALOG AUXILIARY #5	50	CHANNEL 10 ANALOG AUXILIARY #6	51	CHANNEL 11 ANALOG AUXILIARY #7	52	CHANNEL 12 ANALOG AUXILIARY #8
----	----------------------	----	----------------------	----	---	----	---------------------------------	----	-------------------------------	----	-------------------------------	----	-------------------------------	----	-------------------------------	----	-------------------------------	----	--------------------------------	----	--------------------------------	----	--------------------------------



53	CHANNEL 5 ANALOG AUXILIARY #1	54	CHANNEL 6 ANALOG AUXILIARY #2	55	CHANNEL 7 ANALOG AUXILIARY #3	56	CHANNEL 8 ANALOG AUXILIARY #4	57	CHANNEL 9 ANALOG AUXILIARY #5	58	CHANNEL 10 ANALOG AUXILIARY #6	59	CHANNEL 11 ANALOG AUXILIARY #7	60	CHANNEL 12 ANALOG AUXILIARY #8	61	CHANNEL 13 ANALOG AUXILIARY #9	62	CHANNEL 14 ANALOG AUXILIARY #10	63	CHANNEL 15 MAIN OIL INJECTION	64	CHANNEL 16 KILN MONITORING OR GFR DRIVE SPEED
----	-------------------------------	----	-------------------------------	----	-------------------------------	----	-------------------------------	----	-------------------------------	----	--------------------------------	----	--------------------------------	----	--------------------------------	----	--------------------------------	----	---------------------------------	----	-------------------------------	----	---



FOR INSTALLATION OF QUANTUM PACKAGE TEST PROCEDURE, SEE MMB NO. 4.11.10.12
FOR INSTALLATION OF COMPUTER BOARDS AND ERRORS, SEE MMB NO. 4.11.10.11
FOR HIGH POT TEST PROCEDURE, SEE MMB NO. 4.11.10.7
FOR QUANTUM ASSEMBLY AND TEST PROCEDURE, SEE MMB NO. 4.11.10.14

PURCHASER		NOTICE TO PURCHASER	
FRICK ORD NO.		REFER TO CONTRACT FOR MATERIAL TO BE SUPPLIED BY FRICK COMPANY. THE AMOUNT OF SUCH MATERIAL IS NOT INCREASED BY ANYTHING SHOWN UPON THIS DRAWING.	
UNLESS OTHERWISE SPECIFIED DIMENSIONS ARE IN INCHES		York International Refrigeration - Frick Wyncboro, PA 17288	
DO NOT SCALE		TITLE	
WIRING DIAGRAM		UL & CE QUANTUM LX	
32 I/O ANALOG BOARD #2		DATE CODE	
D 23587		DWG NO	
D 649D5211		REV	
SCALE		C	