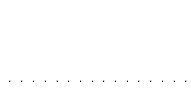
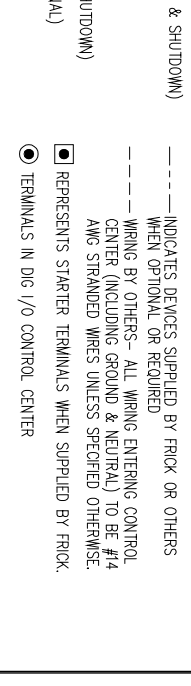
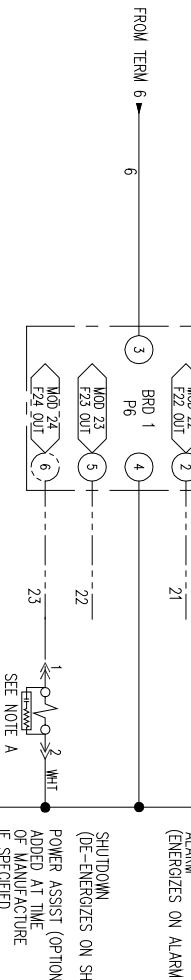
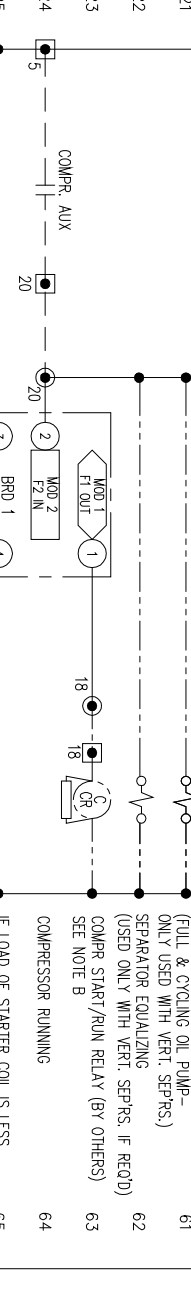
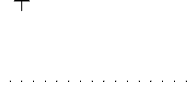
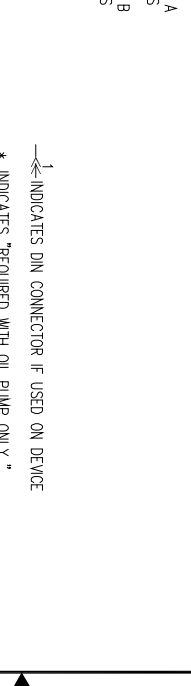
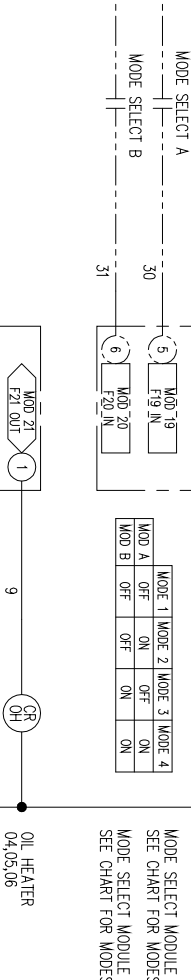
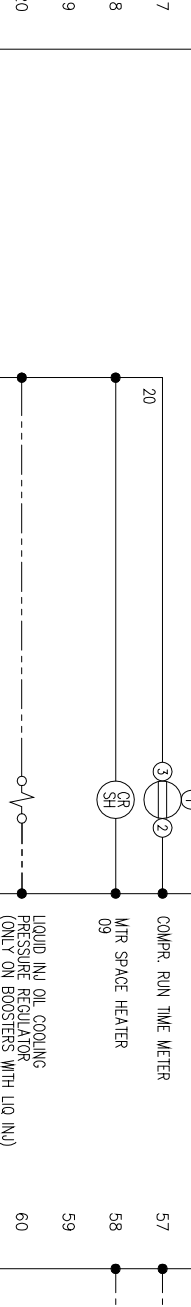
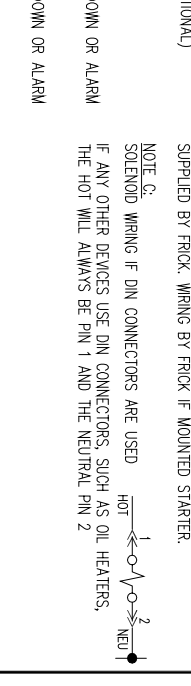
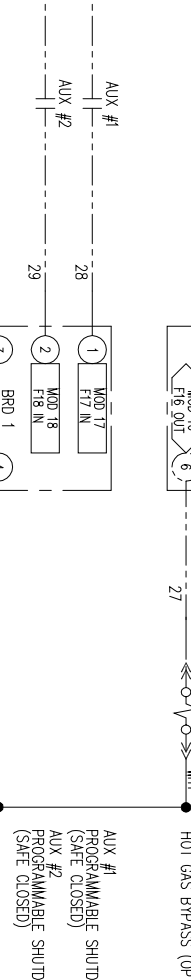
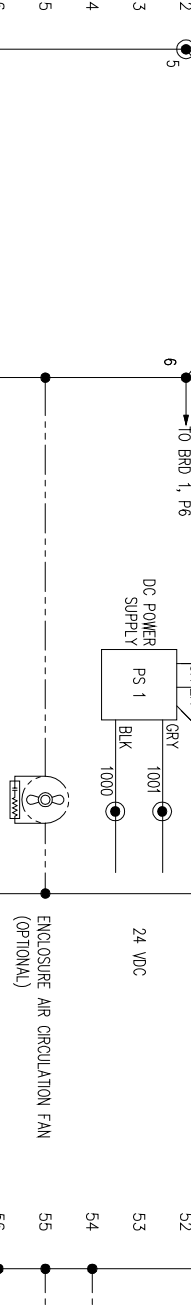
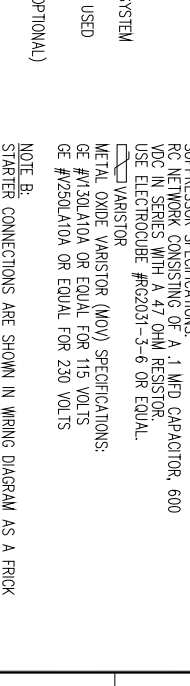
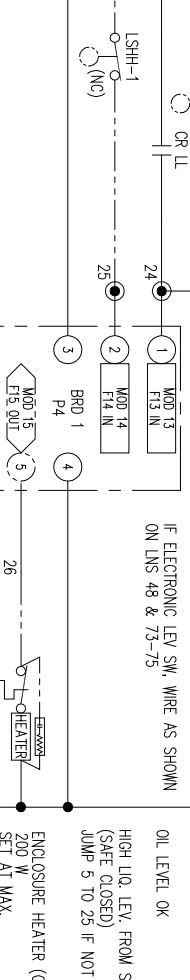
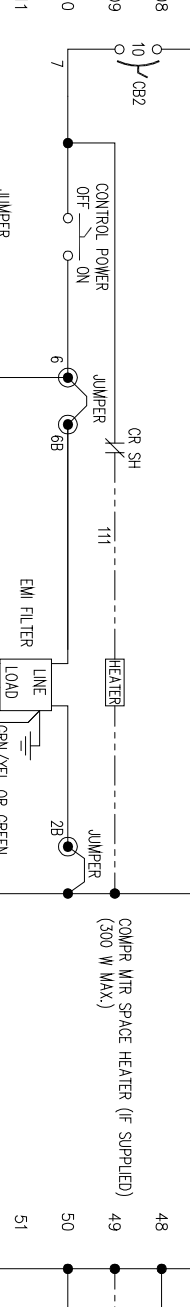
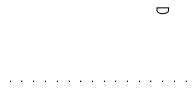
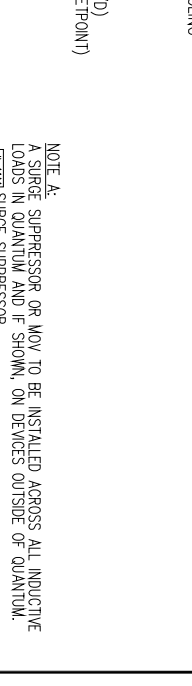
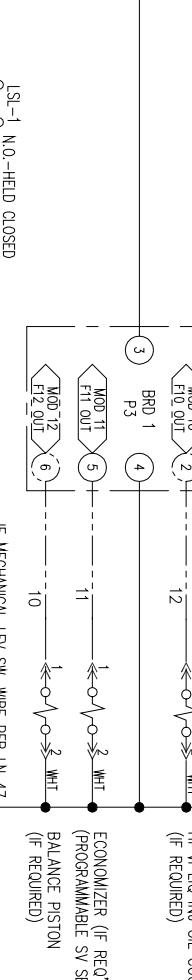
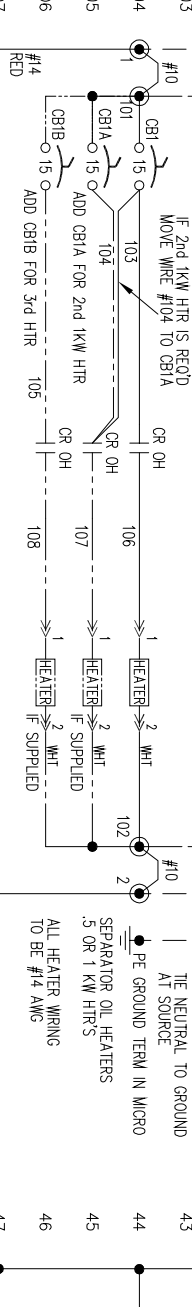
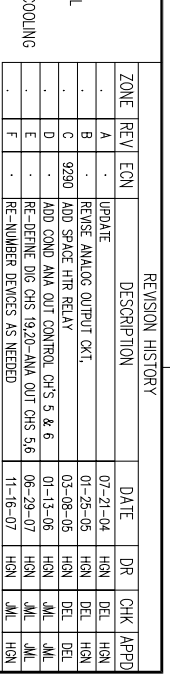
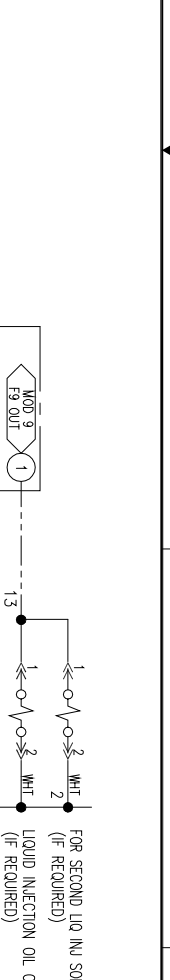
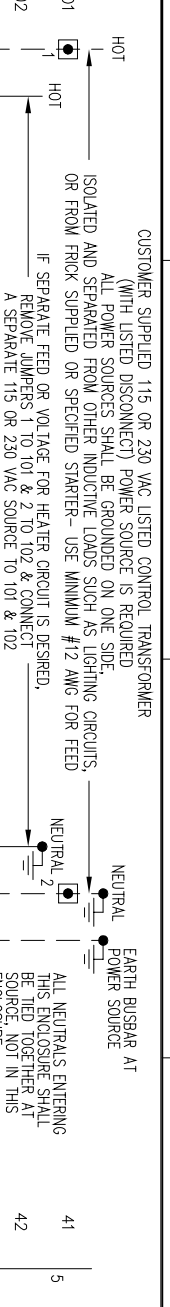


ZONE	REV	ECN	DESCRIPTION	DATE	DR	CHK	APPD
A	..	..	UPDATE	07-21-04	HEN	DEL	HEN
B	..	..	REVISE ALARM OUTPUT OK1	01-25-05	HEN	DEL	HEN
C	9290	..	ADD SPACE HIR RELAY	03-08-06	HEN	DEL	HEN
D	..	..	ADD COND ANA OUT CONTROL CH5'S 5 & 6	01-13-06	HEN	DEL	HEN
E	..	..	RE-DEFINE DIG CHS (9/20-ANA OUT CHS 3,6	08-29-07	HEN	JML	JML
F	..	..	RE-NUMBER DEVICES AS NEEDED	11-16-07	HEN	JML	HEN



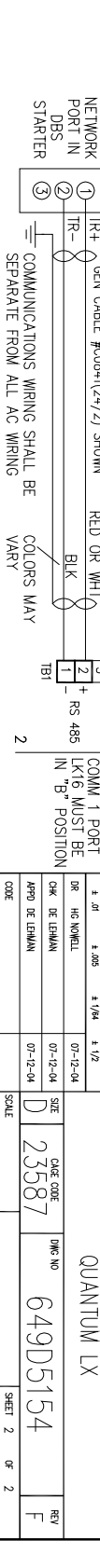
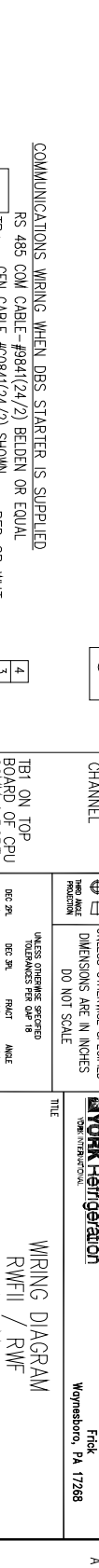
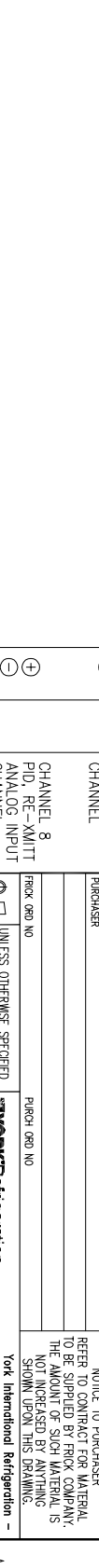
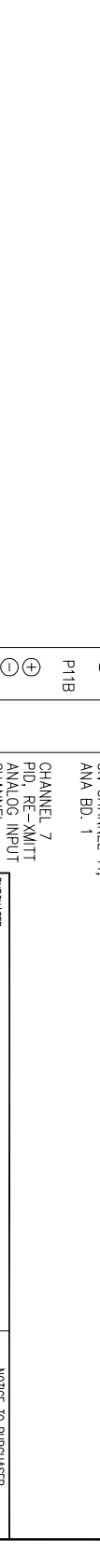
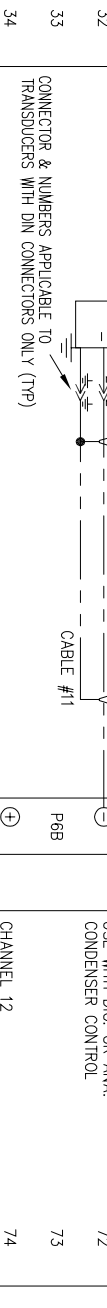
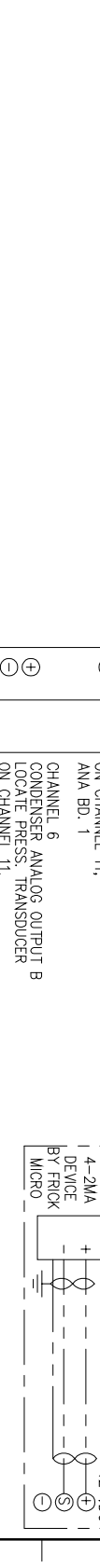
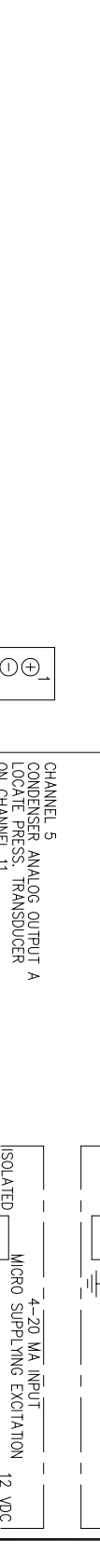
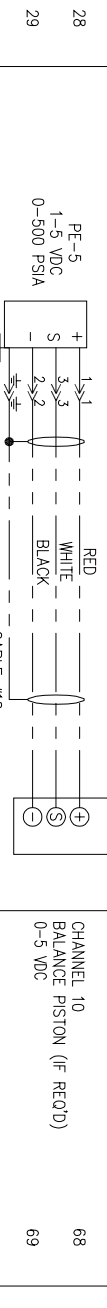
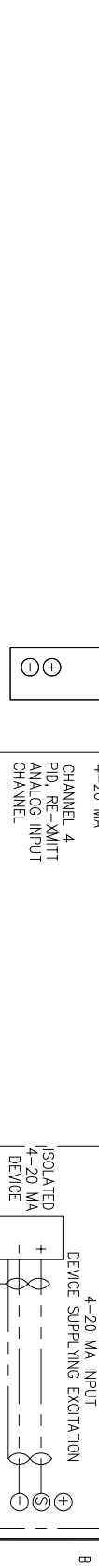
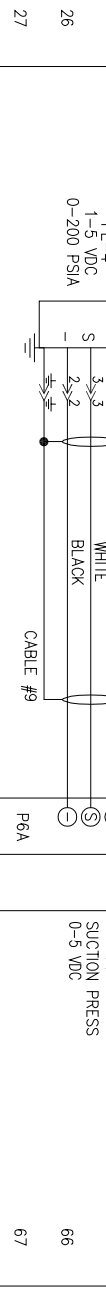
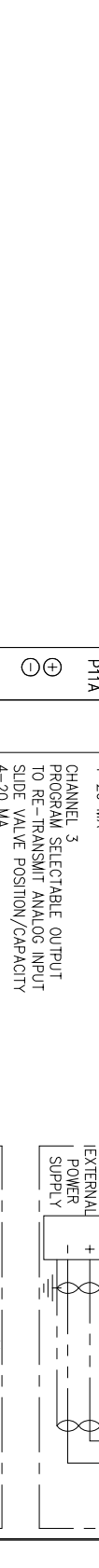
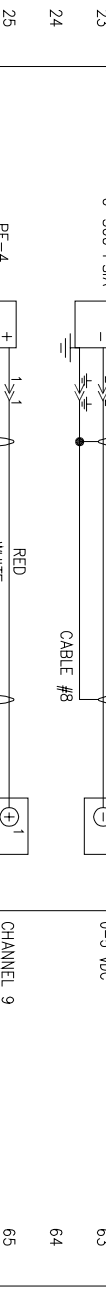
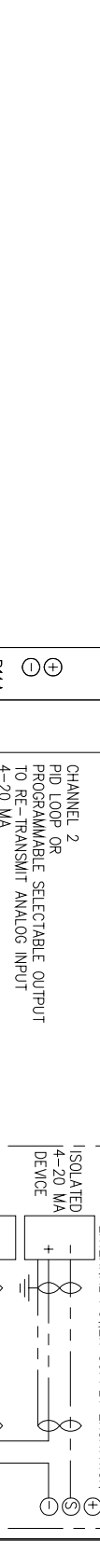
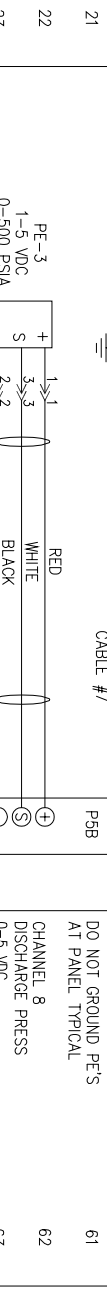
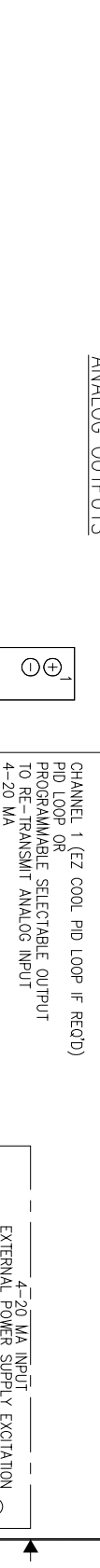
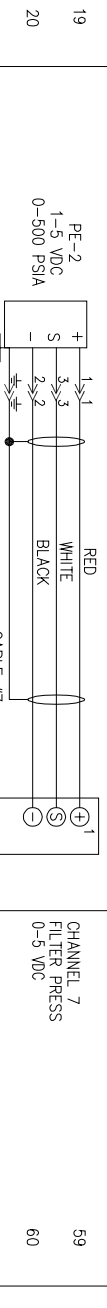
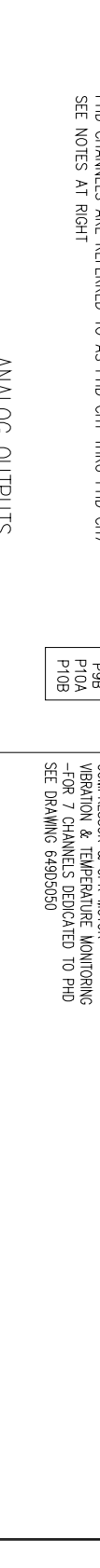
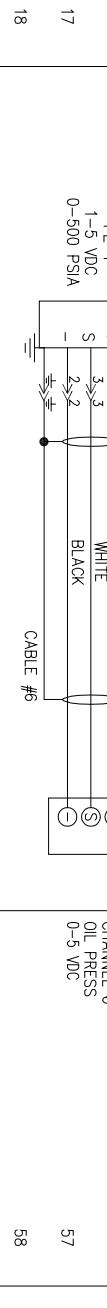
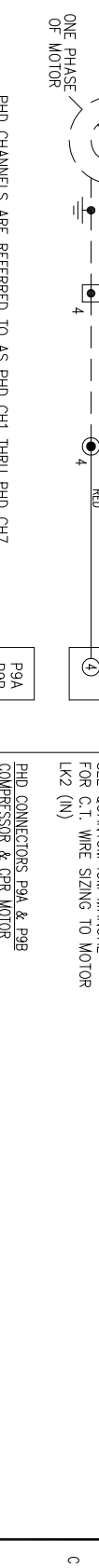
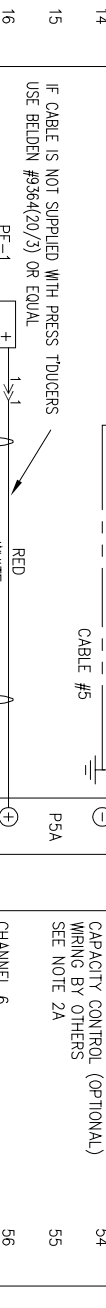
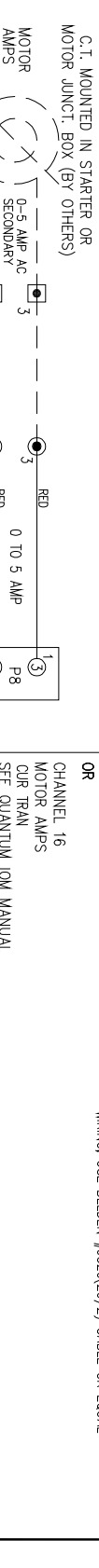
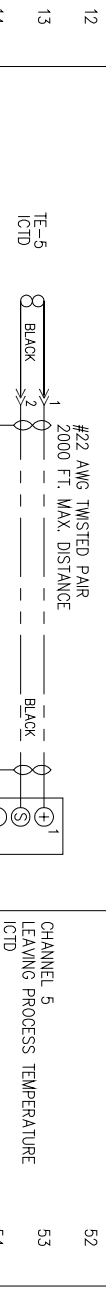
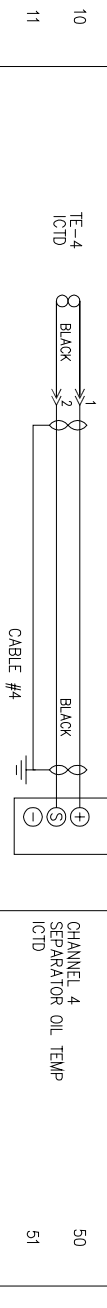
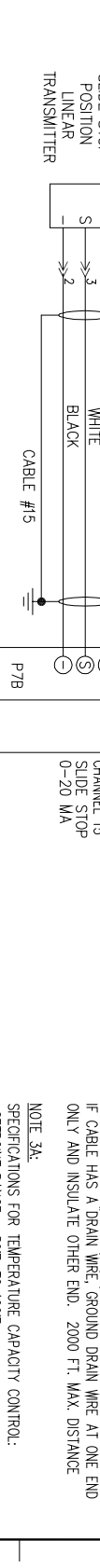
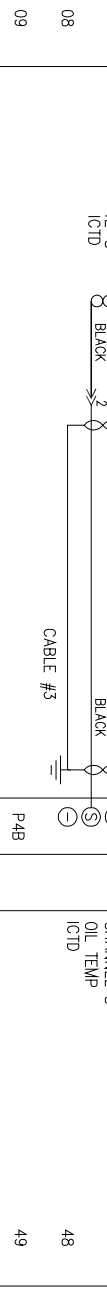
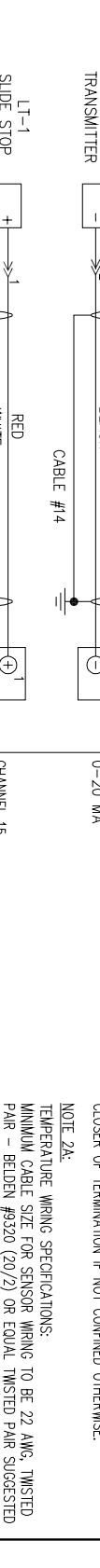
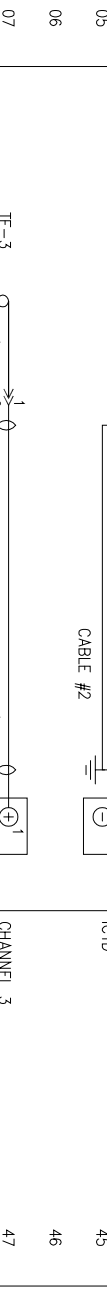
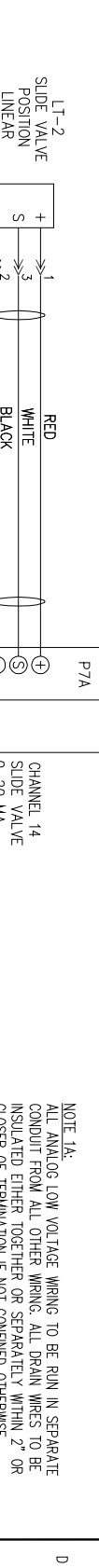
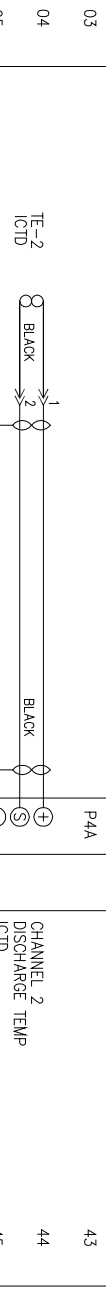
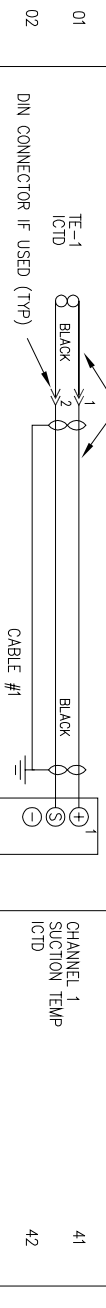
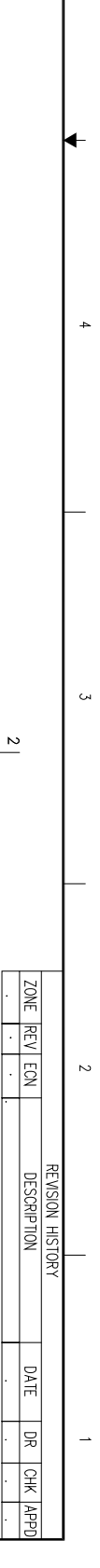
ZONE	REV	ECN	DESCRIPTION	DATE	DR	CHK	APPD

REVISION HISTORY

NOTE 1A:  
ALL ANALOG LOW VOLTAGE WIRING TO BE RUN IN SEPARATE CONDUIT FROM ALL OTHER WIRING. ALL DRAIN WIRES TO BE INSULATED EITHER TOGETHER OR SEPARATELY WITHIN 2" OR CLOSER OF TERMINATION IF NOT CONFINED OTHERWISE.

NOTE 2A:  
TEMPERATURE WIRING SPECIFICATIONS:  
MINIMUM CABLE SIZE FOR SENSOR WIRING TO BE 22 AWG, TWISTED PAIR - BELDEN #9320 (20/2) OR EQUAL TWISTED PAIR SUGGESTED IF CABLE HAS A DRAIN WIRE. GROUND DRAIN WIRE AT ONE END ONLY AND INSULATE OTHER END. 2000 FT. MAX. DISTANCE

NOTE 3A:  
SPECIFICATIONS FOR TEMPERATURE CAPACITY CONTROL:  
-SETPOINT RANGE: -50F. TO 100F.  
-TEMPERATURE ASSEMBLY FOR NON-HAZARDOUS LOCATION (FRICK P/N 639A015103) WITH 1/2" NPT OR 639A015102Z FOR CABLE STRAIN RELIEF  
-WIRE AS SHOWN IN SEPARATE CONDUIT FROM ALL OTHER WIRING. USE BELDEN #9320(20/2) CABLE OR EQUAL



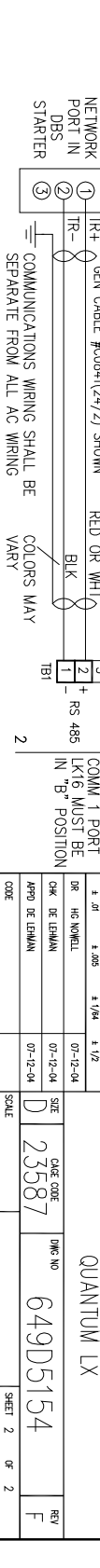
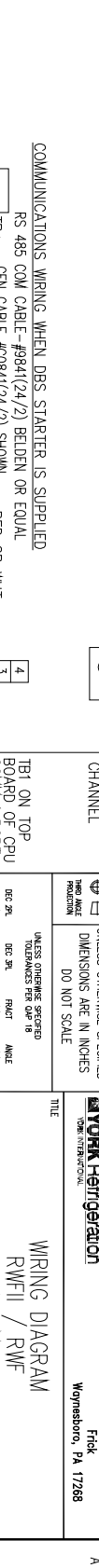
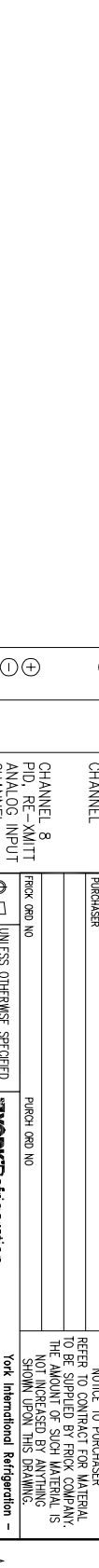
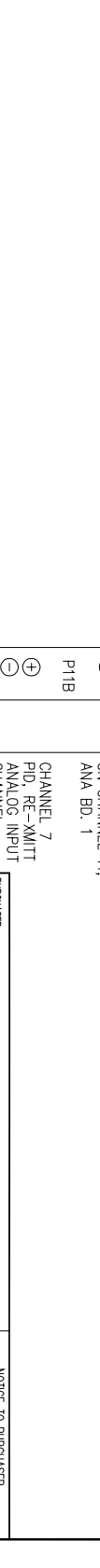
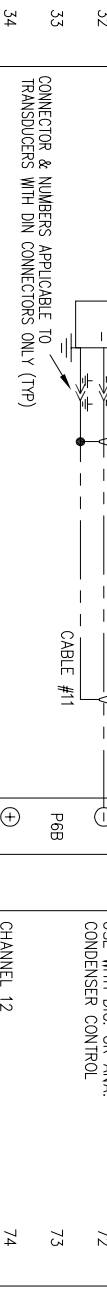
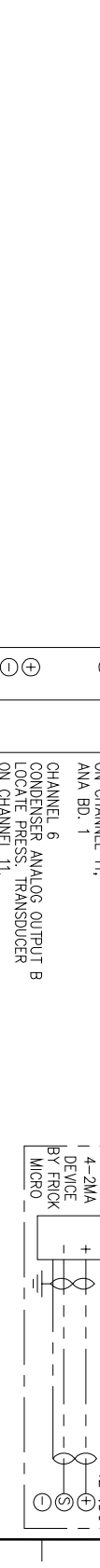
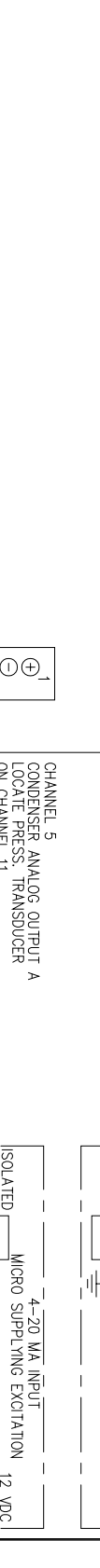
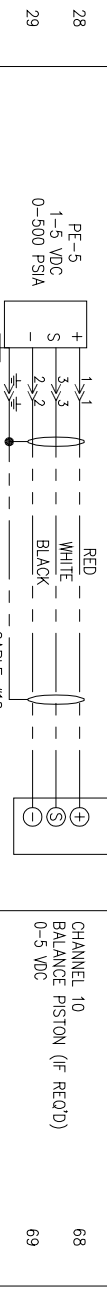
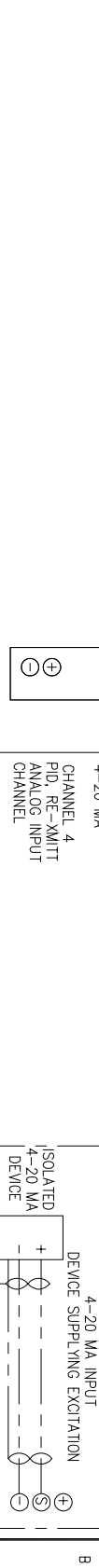
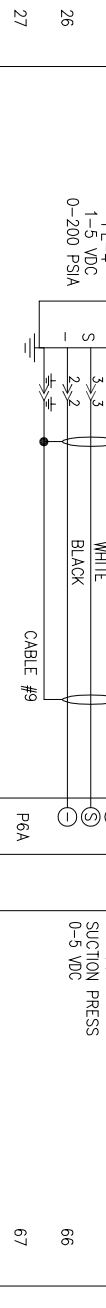
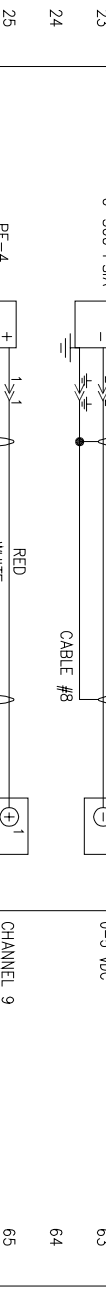
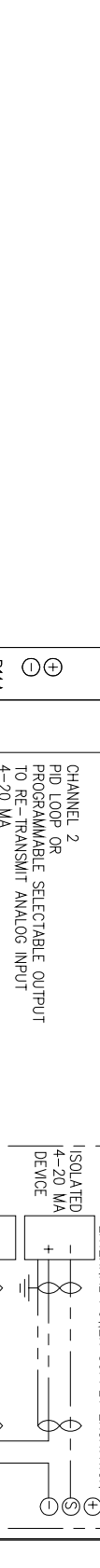
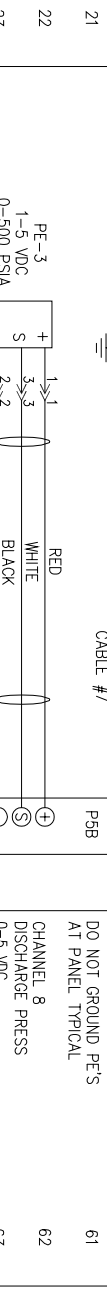
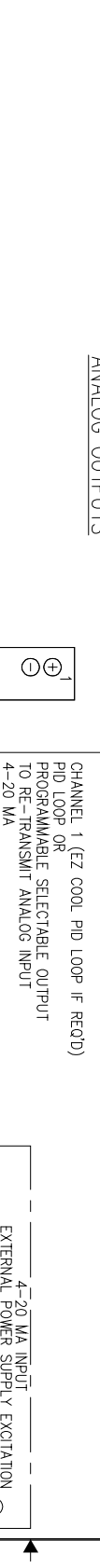
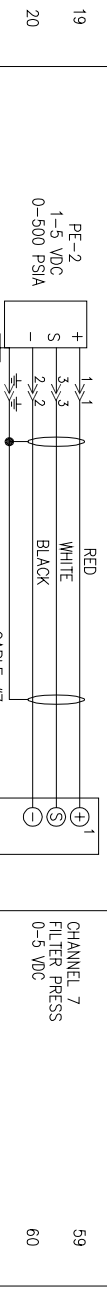
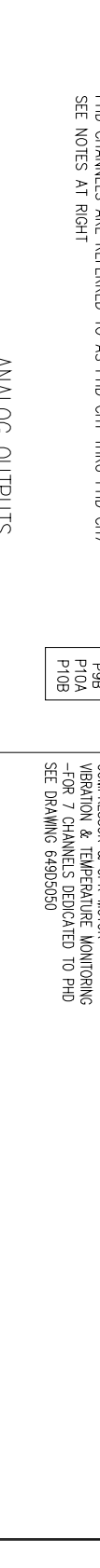
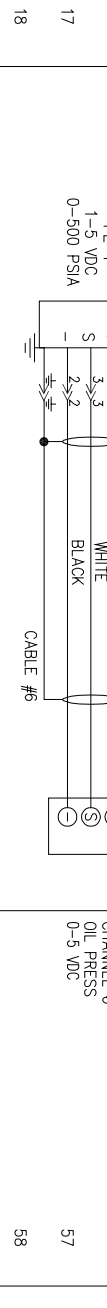
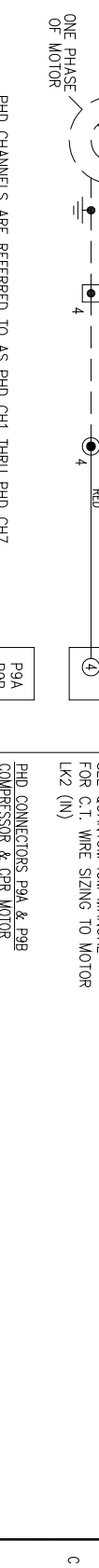
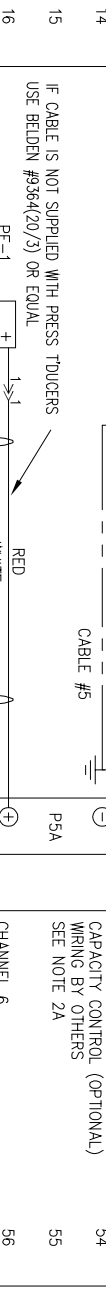
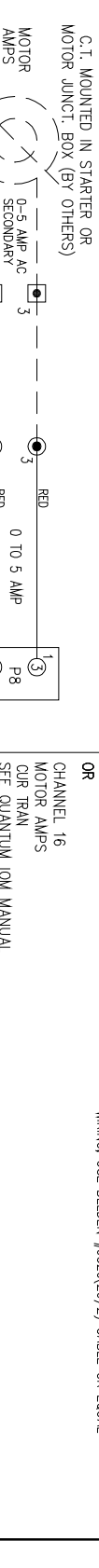
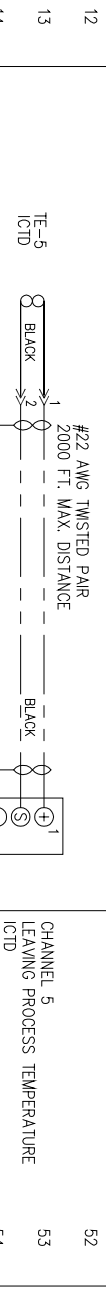
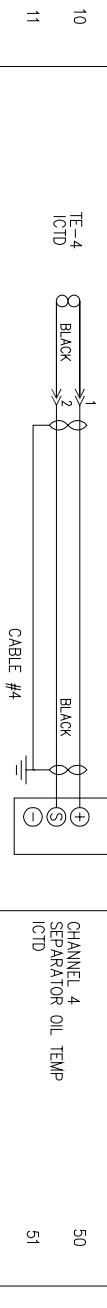
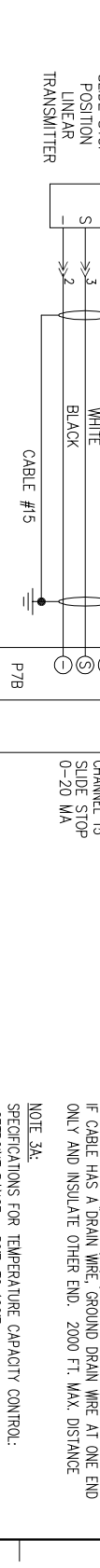
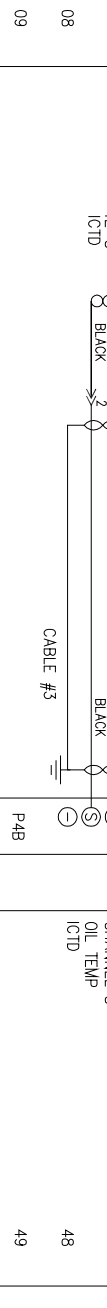
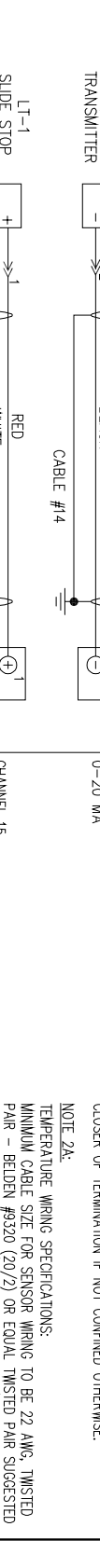
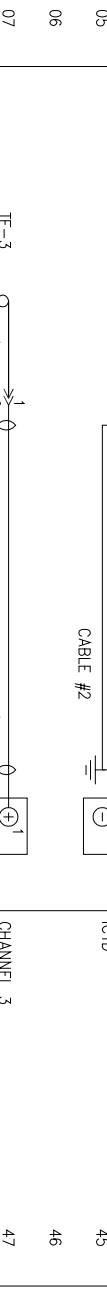
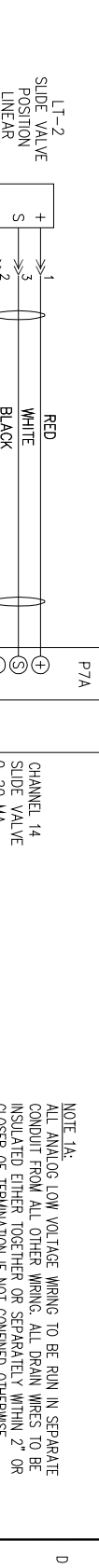
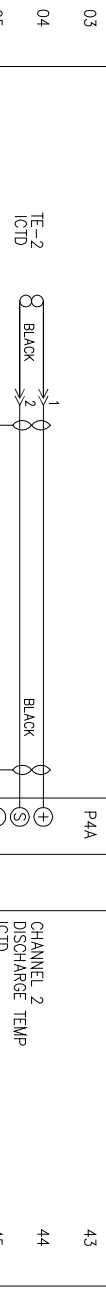
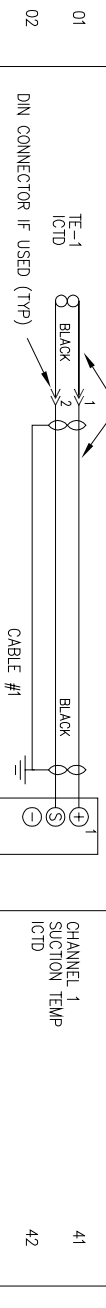
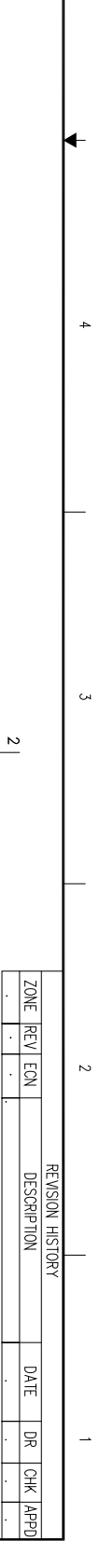
ZONE	REV	ECN	DESCRIPTION	DATE	DR	CHK	APPD

REVISION HISTORY

NOTE 1A:  
ALL ANALOG LOW VOLTAGE WIRING TO BE RUN IN SEPARATE CONDUIT FROM ALL OTHER WIRING. ALL DRAIN WIRES TO BE INSULATED EITHER TOGETHER OR SEPARATELY WITHIN 2" OR CLOSER OF TERMINATION IF NOT CONFINED OTHERWISE.

NOTE 2A:  
TEMPERATURE WIRING SPECIFICATIONS:  
MINIMUM CABLE SIZE FOR SENSOR WIRING TO BE 22 AWG, TWISTED PAIR - BELDEN #9320 (20/2) OR EQUAL TWISTED PAIR SUGGESTED IF CABLE HAS A DRAIN WIRE. GROUND DRAIN WIRE AT ONE END ONLY AND INSULATE OTHER END. 2000 FT. MAX. DISTANCE

NOTE 3A:  
SPECIFICATIONS FOR TEMPERATURE CAPACITY CONTROL:  
-SETPOINT RANGE: -50F. TO 100F.  
-TEMPERATURE ASSEMBLY FOR NON-HAZARDOUS LOCATION (FRICK P/N 639A015103) WITH 1/2" NPT OR 639A015102Z FOR CABLE STRAIN RELIEF  
-WIRE AS SHOWN IN SEPARATE CONDUIT FROM ALL OTHER WIRING. USE BELDEN #9320(20/2) CABLE OR EQUAL



ZONE	REV	ECN	DESCRIPTION	DATE	DR	CHK	APPD

REVISION HISTORY

NOTE 1A:  
ALL ANALOG LOW VOLTAGE WIRING TO BE RUN IN SEPARATE CONDUIT FROM ALL OTHER WIRING. ALL DRAIN WIRES TO BE INSULATED EITHER TOGETHER OR SEPARATELY WITHIN 2" OR CLOSER OF TERMINATION IF NOT CONFINED OTHERWISE.

NOTE 2A:  
TEMPERATURE WIRING SPECIFICATIONS:  
MINIMUM CABLE SIZE FOR SENSOR WIRING TO BE 22 AWG, TWISTED PAIR - BELDEN #9320 (20/2) OR EQUAL TWISTED PAIR SUGGESTED IF CABLE HAS A DRAIN WIRE. GROUND DRAIN WIRE AT ONE END ONLY AND INSULATE OTHER END. 2000 FT. MAX. DISTANCE

NOTE 3A:  
SPECIFICATIONS FOR TEMPERATURE CAPACITY CONTROL:  
-SETPOINT RANGE: -50F. TO 100F.  
-TEMPERATURE ASSEMBLY FOR NON-HAZARDOUS LOCATION (FRICK P/N 639A015103) WITH 1/2" NPT OR 639A015102Z FOR CABLE STRAIN RELIEF  
-WIRE AS SHOWN IN SEPARATE CONDUIT FROM ALL OTHER WIRING. USE BELDEN #9320(20/2) CABLE OR EQUAL

