

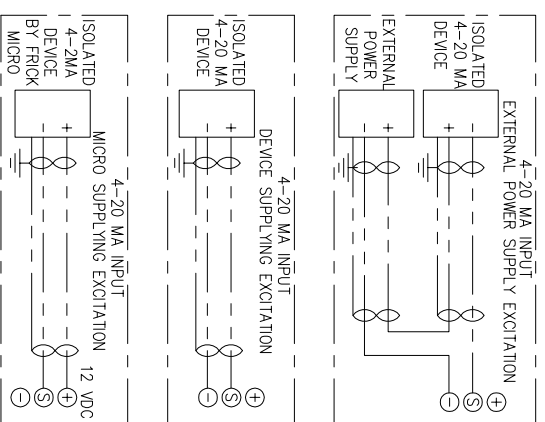
ZONE	REV	ECN	DESCRIPTION	DATE	DR	CHK	APPD

REVISION HISTORY

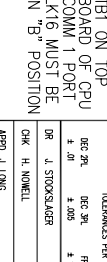
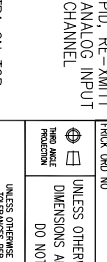
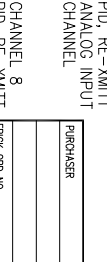
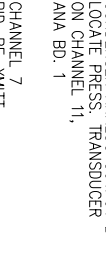
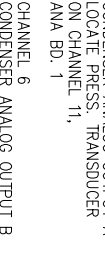
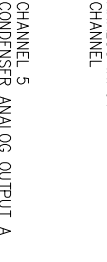
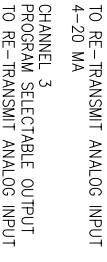
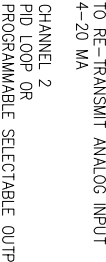
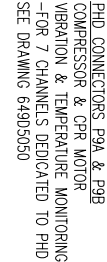
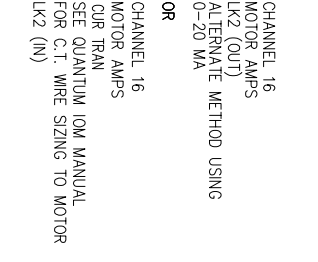
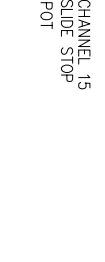
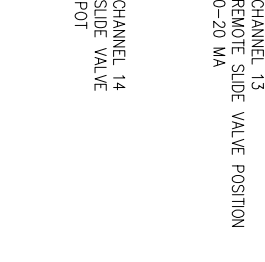
NOTE 1A:
ALL ANALOG LOW VOLTAGE WIRING TO BE RUN IN SEPARATE CONDUIT FROM ALL OTHER WIRING. ALL DRAIN WIRES TO BE INSULATED EITHER TOGETHER OR SEPARATELY WITHIN 2" OR CLOSER OF TERMINATION IF NOT CONFINED OTHERWISE.

NOTE 2A:
TEMPERATURE WIRING SPECIFICATIONS:
MINIMUM CABLE SIZE FOR SENSOR WIRING TO BE 22 AWG. TWISTED PAIR - BELDEN #9320 (20/2) OR EQUAL TWISTED PAIR SUGGESTED IF CABLE HAS A DRAIN WIRE. GROUND DRAIN WIRE AT ONE END ONLY AND INSULATE OTHER END. 2000 FT. MAX. DISTANCE

NOTE 3A:
SPECIFICATIONS FOR TEMPERATURE CAPACITY CONTROL:
-SETPPOINT RANGE: -50F. TO 100F.
-TEMPERATURE ASSEMBLY FOR NON-HAZARDOUS LOCATION (FRICK P/N 639A015103) WITH 1/2" NPT OR 639A015102Z FOR CABLE STRAIN RELIEF
-WIRE AS SHOWN IN SEPARATE CONDUIT FROM ALL OTHER WIRING. USE BELDEN #9320(20/2) CABLE OR EQUAL



CHANNEL 16 MOTOR AMPS CUR TRAIL SEE QUANTUM IOM MANUAL FOR C.T. WIRE SIZING TO MOTOR LK2 (IN)
OR
CHANNEL 16 MOTOR AMPS CUR TRAIL SEE QUANTUM IOM MANUAL FOR C.T. WIRE SIZING TO MOTOR LK2 (IN)
PHD CONNECTORS P9A & P9B COMPRESSOR & GPR MOTOR VIBRATION & TEMPERATURE MONITORING -FOR 7 CHANNELS DEDICATED TO PHD SEE DRAWING 649D5050



ANALOG BOARD #1

