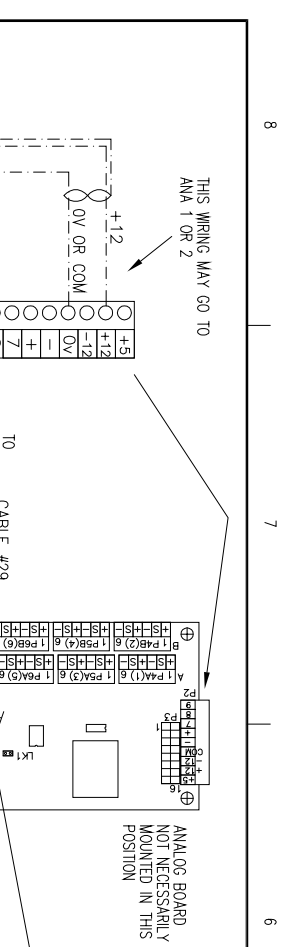


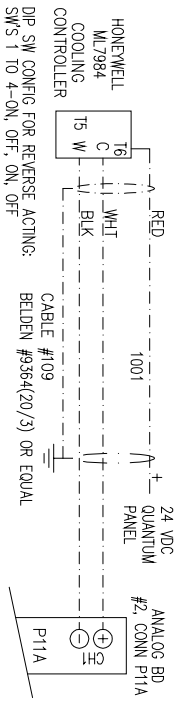
ZONE	REV	ECN	DESCRIPTION	DATE	DR	CHK	APPD

REVISION HISTORY

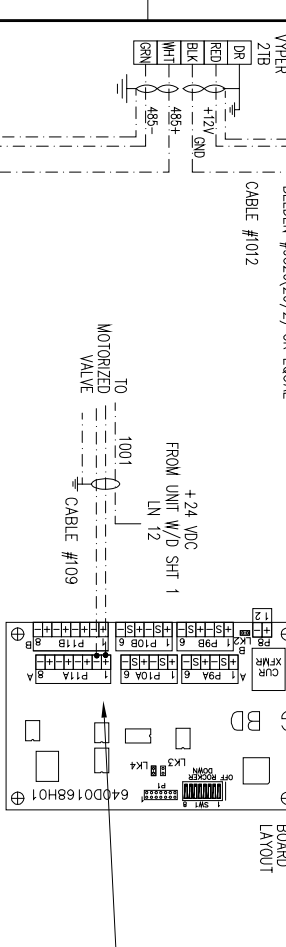


NOTE:
ANALOG BOARD 2 HAS THE SAME CONNECTOR NUMBERS AS ANALOG BOARD 1—SEE LAYOUT ON THIS SHEET

MOTORIZED VALVE



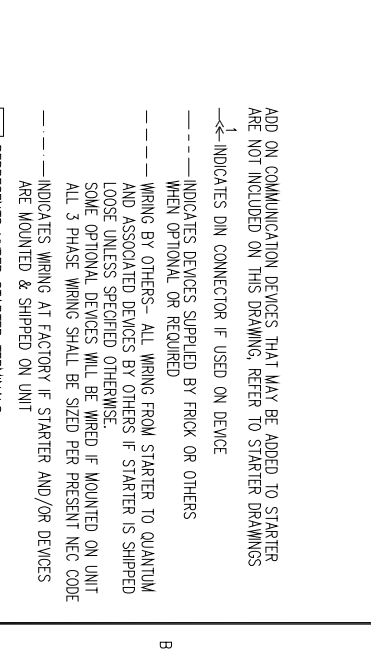
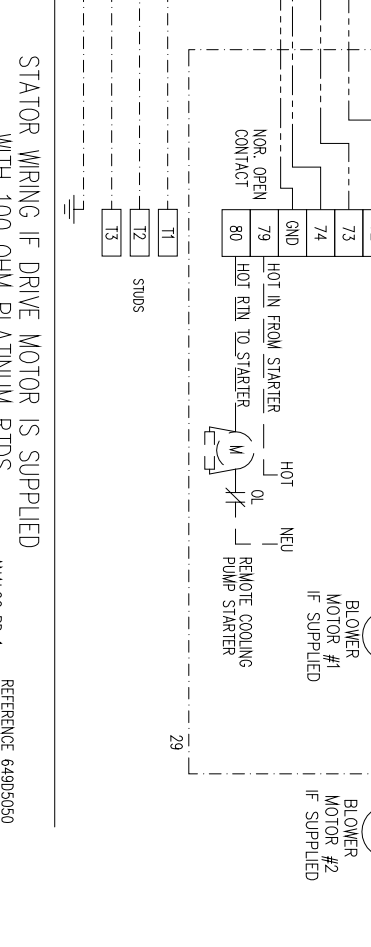
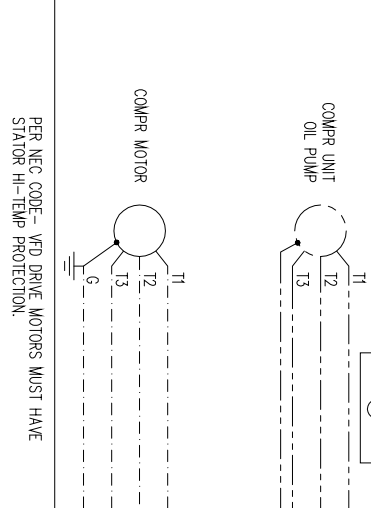
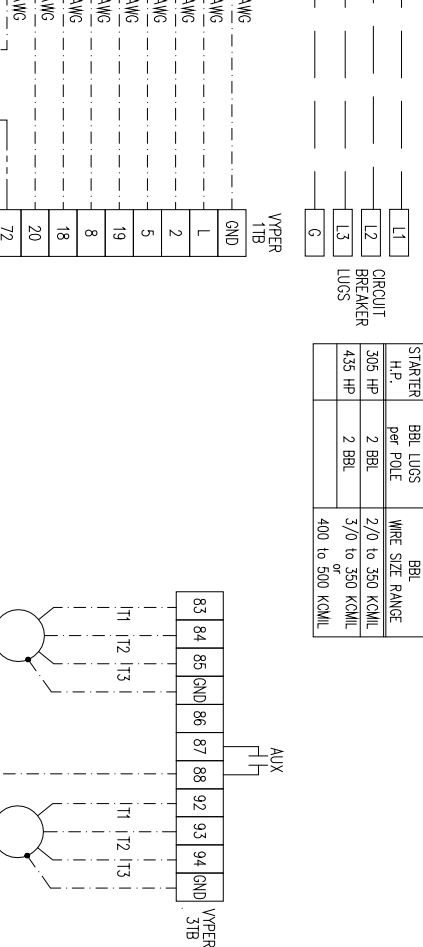
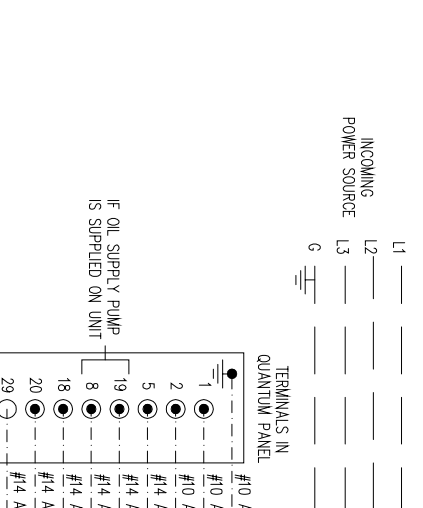
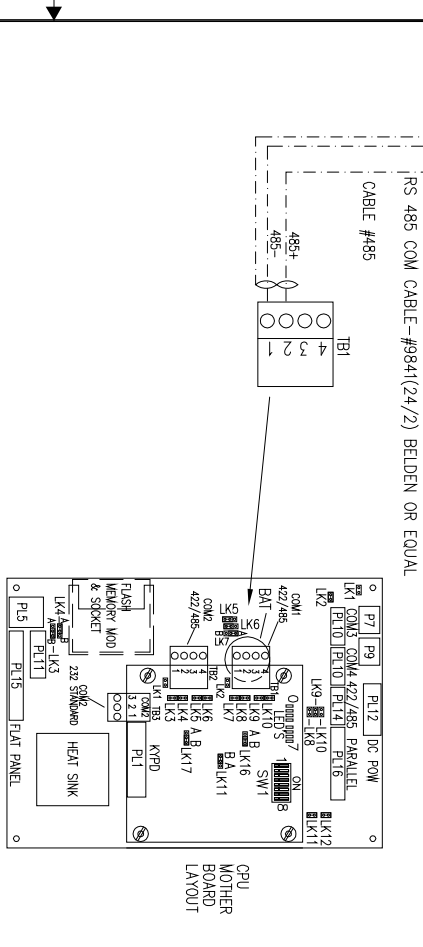
CHANNEL 13, ANA. BD. 2
(ANALOG INPUT AUXILIARY #9)
YPER COOLING TEMP (IF SUPPLIED)
ICTD INPUT



YPER STARTER TO QUANTUM & UNIT MOTORS

LINE SIDE CONNECTION INFORMATION

STARTER	BBL LUS5	H.P.	per POLE	WIRE SIZE RANGE
305 HP	2 BBL	2/0 to 350 KCMIL		
435 HP	2 BBL	3/0 to 350 KCMIL		
400 to 500 KCMIL				



ADD ON COMMUNICATION DEVICES THAT MAY BE ADDED TO STARTER ARE NOT INCLUDED ON THIS DRAWING. REFER TO STARTER DRAWINGS

INDICATES DIN CONNECTOR IF USED ON DEVICE

INDICATES DEVICES SUPPLIED BY FRICK OR OTHERS WHEN OPTIONAL OR REQUIRED

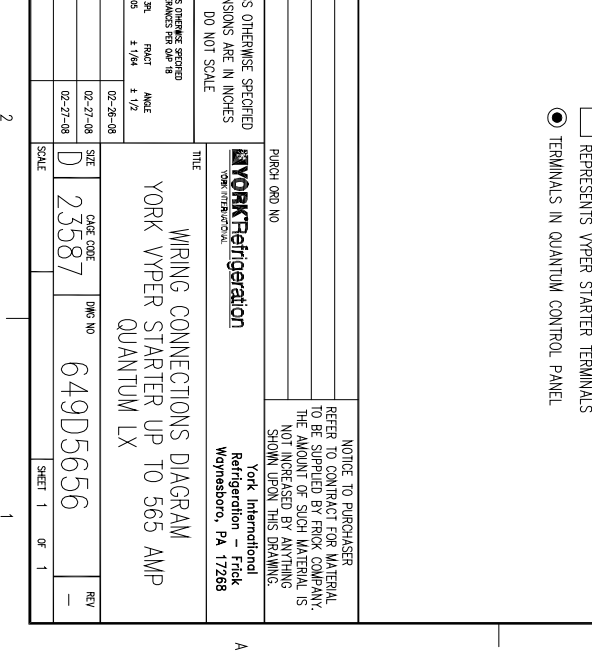
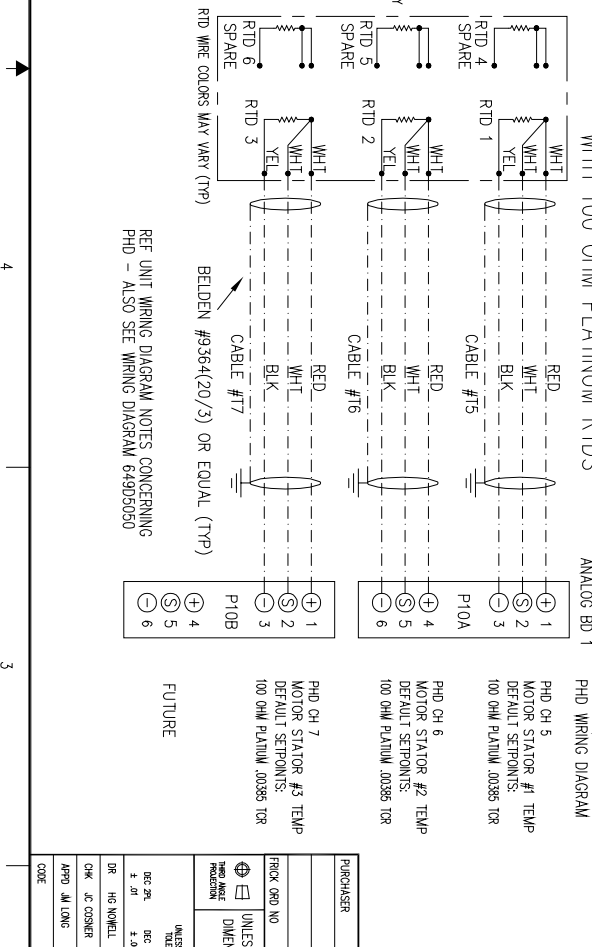
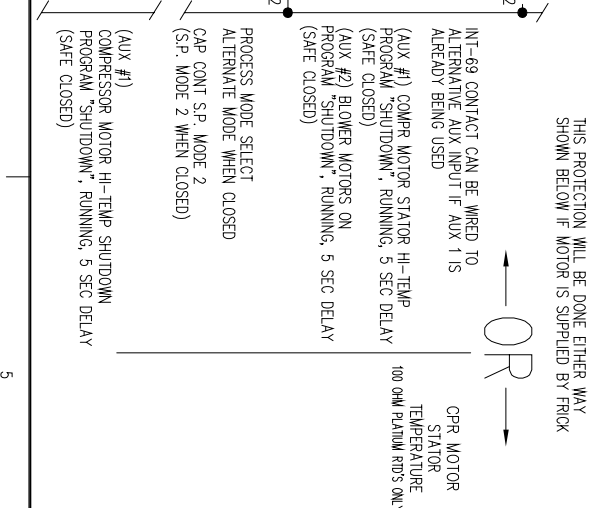
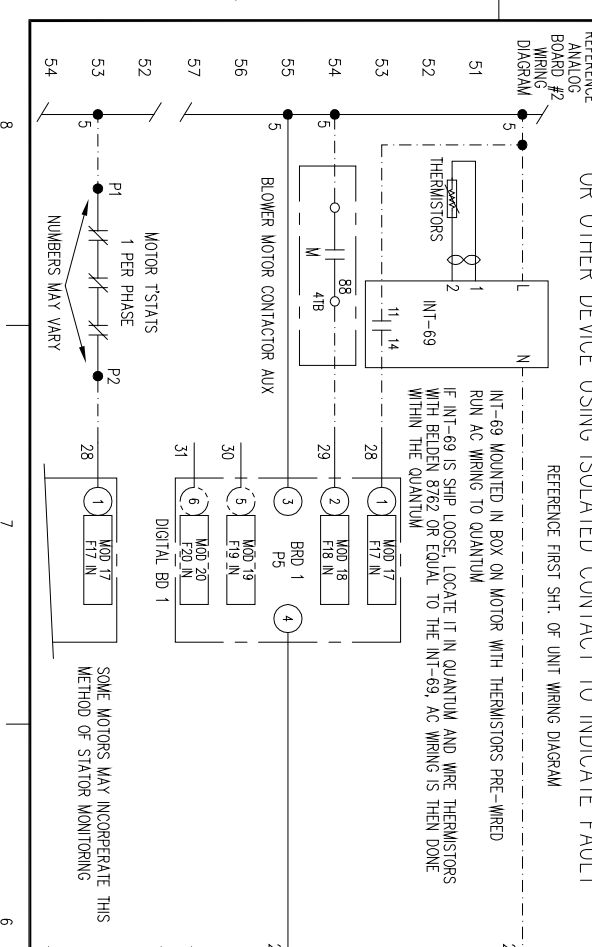
WIRING BY OTHERS—ALL WIRING FROM STARTER TO QUANTUM AND ASSOCIATED DEVICES BY OTHERS IF STARTER IS SHIPPED LOOSE UNLESS SPECIFIED OTHERWISE

SOME OPTIONAL DEVICES WILL BE WIRED PER PRESENT NEC CODE ALL 3 PHASE WIRING SHALL BE SIZED PER PRESENT NEC CODE

INDICATES WIRING AT FACTORY IF STARTER AND/OR DEVICES ARE MOUNTED & SHIPPED ON UNIT

REPRESENTS YPER STARTER TERMINALS

TERMINALS IN QUANTUM CONTROL PANEL



REFERENCE 649D5050 PHD WIRING DIAGRAM

PHD CH 5 MOTOR STATOR #1 TEMP DEFAULT SETPOINTS: 100 OHM PLATINUM 00385 TOR

PHD CH 6 MOTOR STATOR #2 TEMP DEFAULT SETPOINTS: 100 OHM PLATINUM 00385 TOR

PHD CH 7 MOTOR STATOR #3 TEMP DEFAULT SETPOINTS: 100 OHM PLATINUM 00385 TOR

FUTURE

REV	DATE	BY	CHK	APPD
1	02-27-08
2	02-27-08

REV	DATE	BY	CHK	APPD
1	02-27-08
2	02-27-08

REV	DATE	BY	CHK	APPD
1	02-27-08
2	02-27-08

REV	DATE	BY	CHK	APPD
1	02-27-08
2	02-27-08

REV	DATE	BY	CHK	APPD
1	02-27-08
2	02-27-08

REV	DATE	BY	CHK	APPD
1	02-27-08
2	02-27-08

REV	DATE	BY	CHK	APPD
1	02-27-08
2	02-27-08

REV	DATE	BY	CHK	APPD
1	02-27-08
2	02-27-08

REV	DATE	BY	CHK	APPD
1	02-27-08
2	02-27-08

REV	DATE	BY	CHK	APPD
1	02-27-08
2	02-27-08

REV	DATE	BY	CHK	APPD
1	02-27-08
2	02-27-08

REV	DATE	BY	CHK	APPD
1	02-27-08
2	02-27-08

REV	DATE	BY	CHK	APPD
1	02-27-08
2	02-27-08

REV	DATE	BY	CHK	APPD
1	02-27-08
2	02-27-08

REV	DATE	BY	CHK	APPD
1	02-27-08
2	02-27-08

REV	DATE	BY	CHK	APPD
1	02-27-08
2	02-27-08