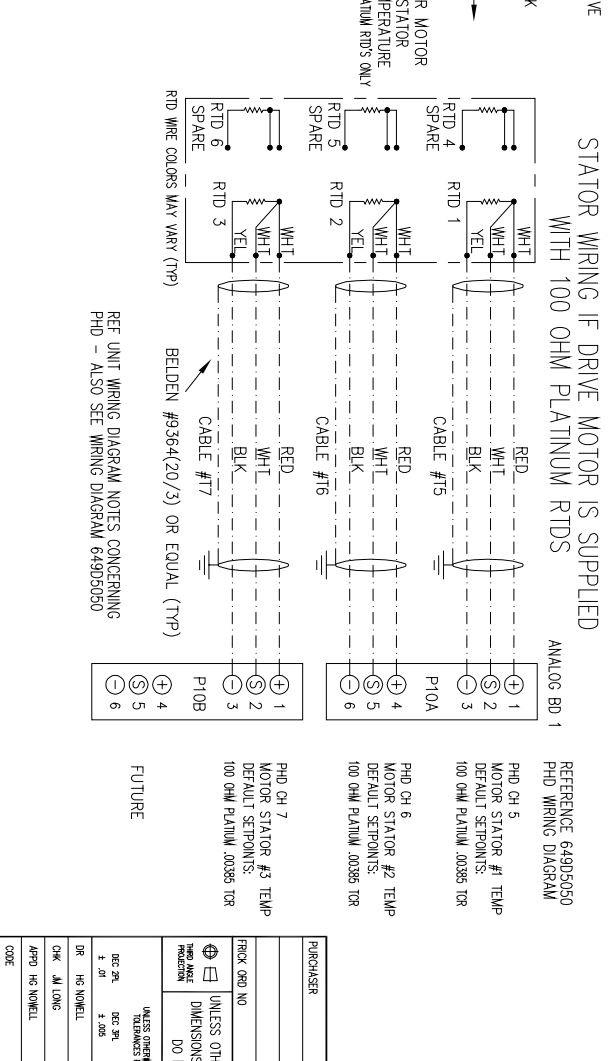
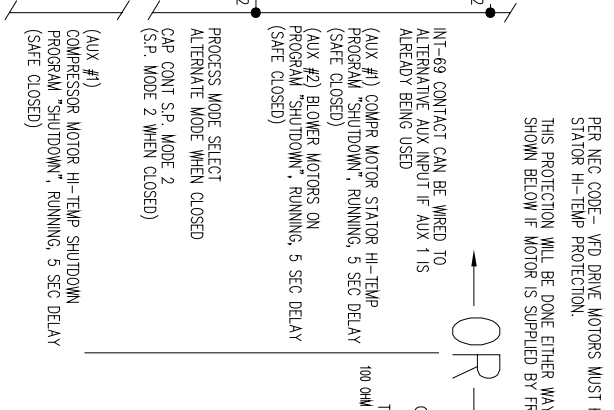
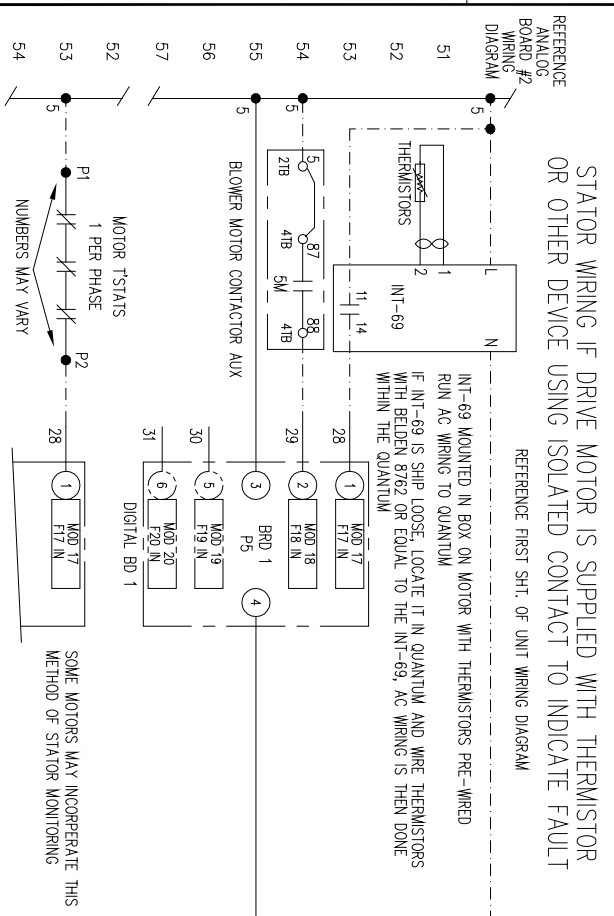
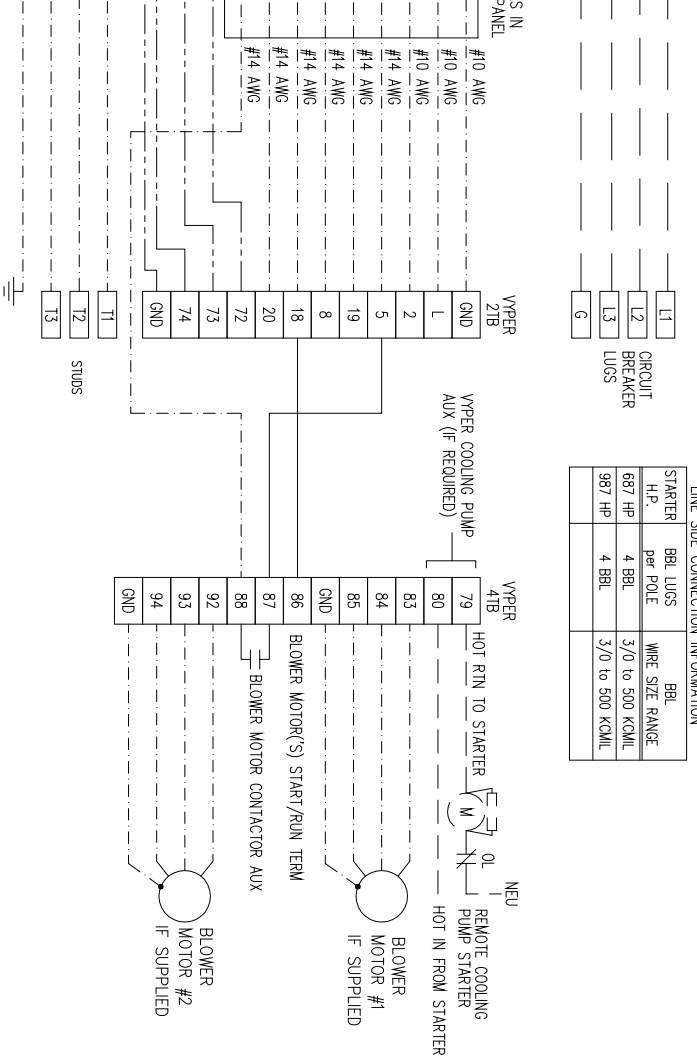
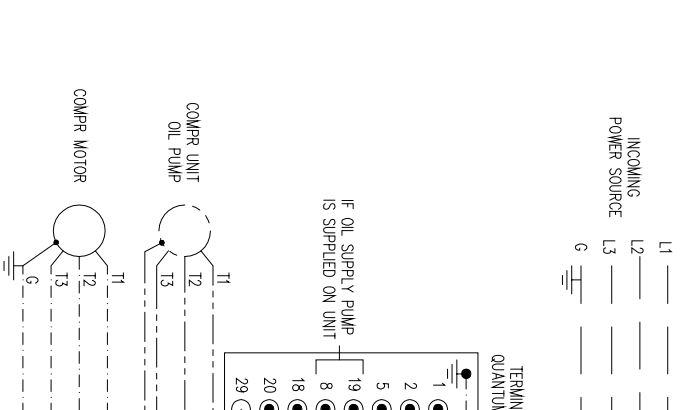
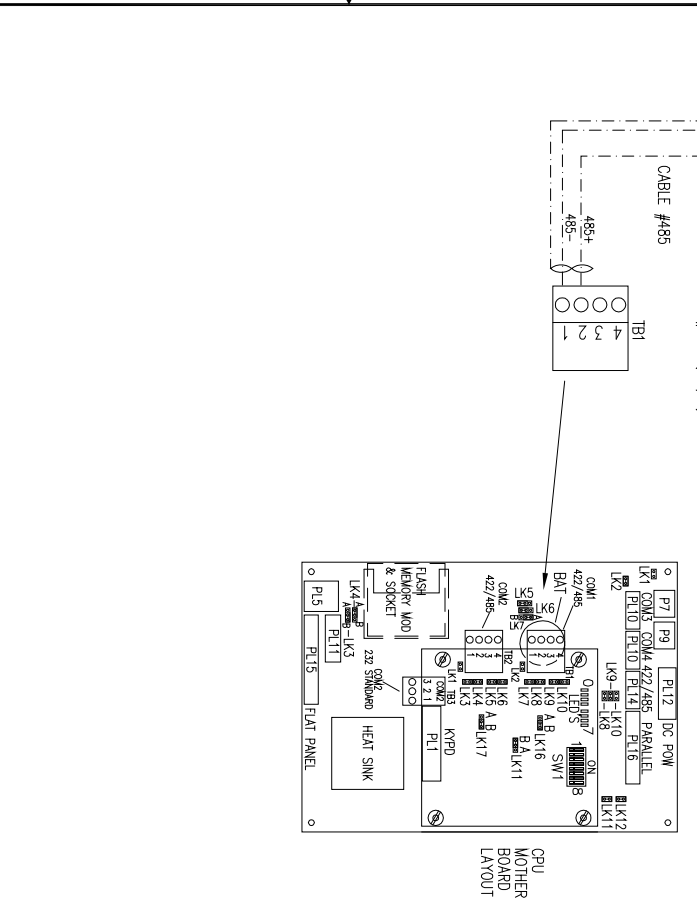
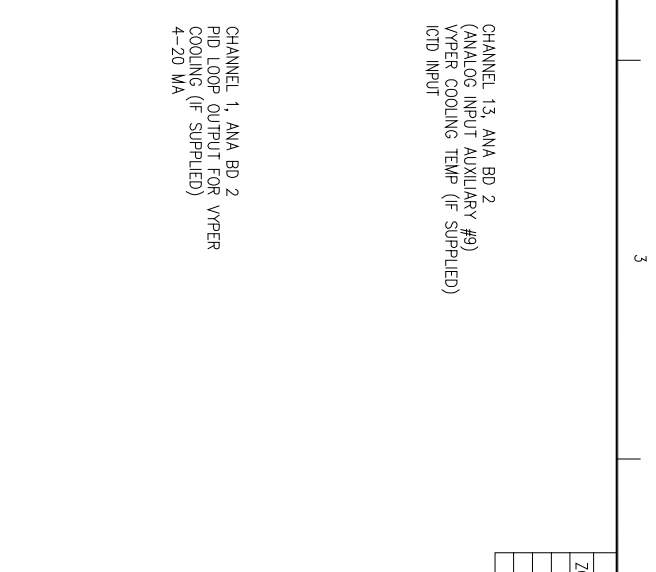
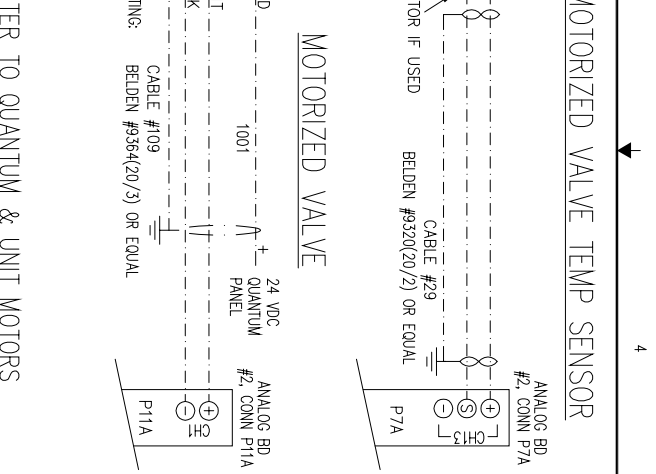
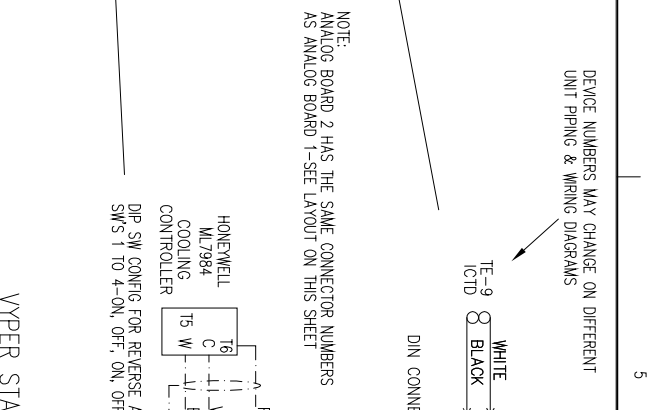
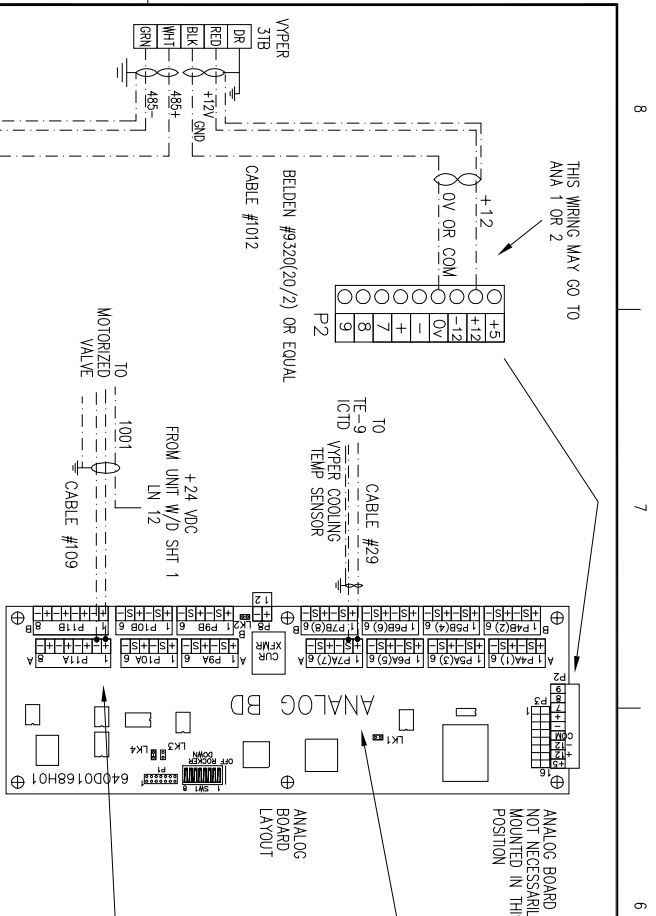


| ZONE | REV | ECN | DESCRIPTION                           | DATE     | DR  | CHK | APPD |
|------|-----|-----|---------------------------------------|----------|-----|-----|------|
| A    |     |     | ADD NOTES FOR WANTED STARTER          | 03-19-07 | HON | MIL | HON  |
| B    |     |     | REVISE WIRING ASSIGNATIONS & LINE/TER | 07-03-07 | HON | MIL | HON  |
| C    |     |     | ADD MISSING LUG INFO, CABLE INFO      | 11-06-07 | HON | MIL | HON  |
| D    |     |     | RE-DEFINE STARTER RATINGS             | 02-26-08 | HON | MIL | JCC  |

REVISION HISTORY



ADD ON COMMUNICATION DEVICES THAT MAY BE ADDED TO STARTER ARE NOT INCLUDED ON THIS DRAWING. REFER TO STARTER DRAWINGS

INDICATES DIN CONNECTOR IF USED ON DEVICE

INDICATES DEVICES SUPPLIED BY FRICK OR OTHERS

WIRING BY OTHERS-- ALL WIRING FROM STARTER TO QUANTUM AND ASSOCIATED DEVICES BY OTHERS IF STARTER IS SHIPPED LOOSE UNLESS SPECIFIED OTHERWISE.

SOME OPTIONAL DEVICES WILL BE WIRED IF MOUNTED ON UNIT

ALL 3 PHASE WIRING SHALL BE SIZED PER PRESENT NEC CODE

--- INDICATES WIRING AT FACTORY IF STARTER AND/OR DEVICES ARE MOUNTED & SHIPPED ON UNIT

□ REPRESENTS VYPER STARTER TERMINALS

● TERMINALS IN QUANTUM CONTROL PANEL

NOTICE TO PURCHASER: REFER TO CONTRACT FOR MATERIAL TO BE SUPPLIED BY FRICK COMPANY. THE AMOUNT OF SUCH MATERIAL IS NOT INCREASED BY ANYTHING SHOWN UPON THIS DRAWING.

YORK Refrigeration - Frick  
Wynessboro, PA 17268

YORK CONTROL WIRING DIAGRAM  
YORK VYPER STARTER-566 THRU 1180 AMPS  
QUANTUM LX

DATE CODE: 23587  
DWG NO: 649D5547

SCALE: D

REV: D