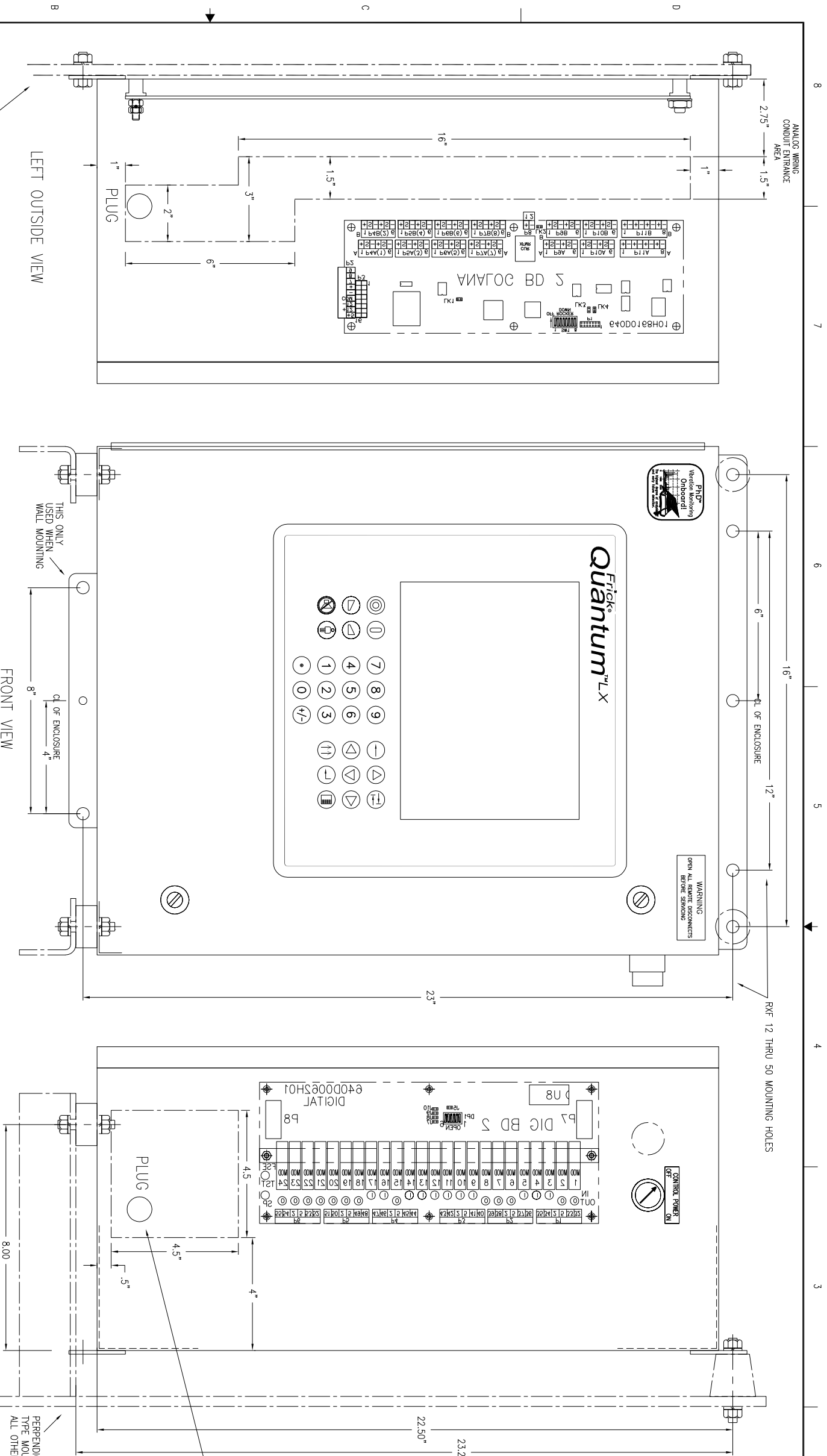
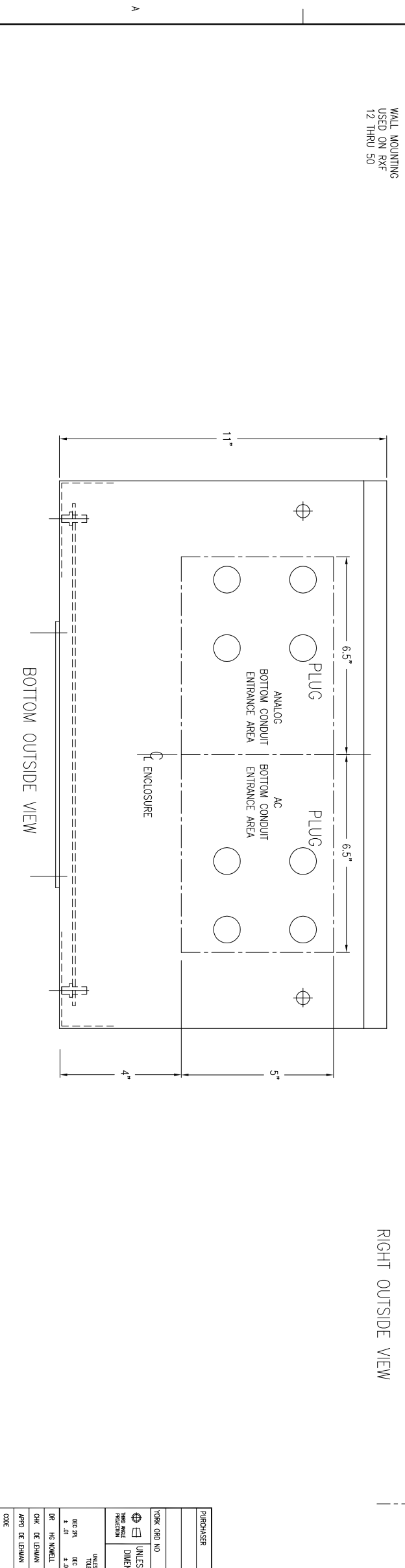


REVISION HISTORY							
ZONE	REV	EGN	DESCRIPTION	DATE	DR	CHK	APPD
A	920		ADD SPACE HIR RELAY, CONDUNTS HOLES	06-06-05	HN	JLS	HN



NOTES:
 -ALL REFERENCES TO LEFT & RIGHT SIDE OF PANELS ARE FACING THE PANEL FROM THE FRONT
 -RXF- 12 THRU 50 UNITS USE THE BACK MOUNTING FLANGES TO MOUNT ENCLOSURE. PLUG TWO BOTTOM MOUNTING HOLES AT UNIT ASSEMBLY
 CUSTOMER'S AC ENTRANCE

APPROXIMATE WEIGHT OF THIS ASSEMBLED ENCLOSURE IS 75 POUNDS



PURCHASER		NOTICE TO PURCHASER	
REFERS TO CONTRACT FOR MATERIAL TO BE SUPPLIED BY YORK REFRIGERATION. THE AMOUNT OF SUCH MATERIAL IS NOT INCREASED BY ANYTHING SHOWN UPON THIS DRAWING.		YORK International Wynessboro, PA 17268	
PURCHASE NO.		TITLE	
UNLESS OTHERWISE SPECIFIED DIMENSIONS ARE IN INCHES		CONTROL PANEL ASSEMBLY QUANTUM LX NON-HAZARDOUS	
UNLESS OTHERWISE SPECIFIED TOLERANCES PER QIP 18		DATE CODE	
DEC 31	DEC 31	FRAC	MM
± .01	± .005	± 1/64	± 1/2
DR	HO	NO	NO
07-12-04	07-12-04		
CHK	DE	CHK	DE
07-12-04	07-12-04		
APRD	DE	APRD	DE
07-12-04	07-12-04		
CODE	CODE	SCALE	SCALE
		1/2	1/2
PURCHASE NO.		DATE CODE	
		23587	
PURCHASE NO.		QMS NO	
		649D5151	
SHEET 1		OF 2	
		REV	
		A	