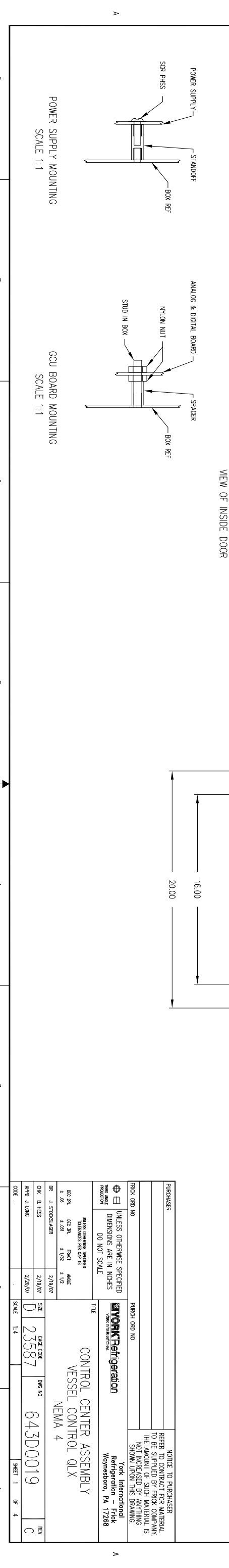
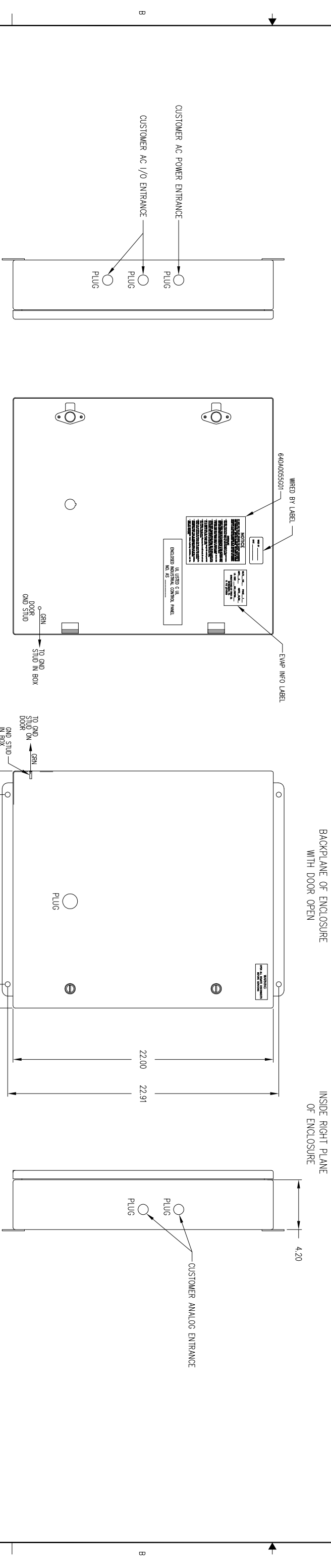
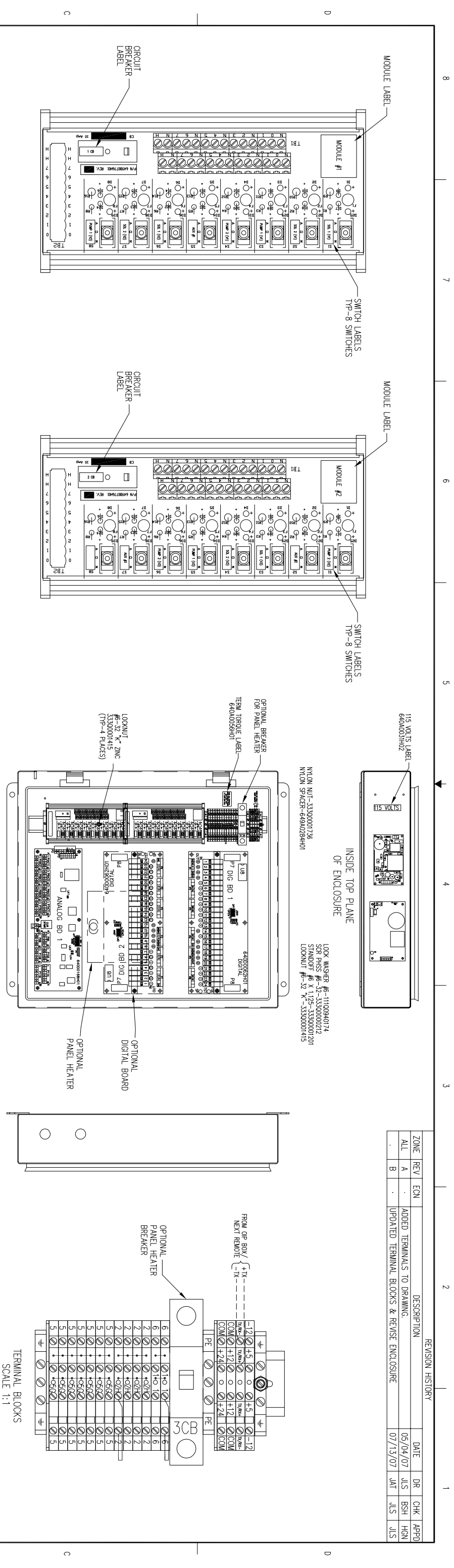


REVISION HISTORY		DATE	DR	CHK	APPD
ALL	REV A	05/04/07	JLS	BSH	HGN
B	REV B	07/13/07	JAT	JLS	JLS

ZONE	REV	EQU	DESCRIPTION
ALL	A		ADDED TERMINALS TO DRAWING.
B			UPDATED TERMINAL BLOCKS & REVISE ENCLOSURE



PURCHASER		PURCH QTY NO		TITLE	
FRICK QTY NO		FRICK QTY NO		CONTROL CENTER ASSEMBLY	
UNLESS OTHERWISE SPECIFIED DIMENSIONS ARE IN INCHES DO NOT SCALE		YORK Refrigeration		VESSEL CONTROL QLX	
UNLESS OTHERWISE SPECIFIED TOLERANCES PER ASME		YORK International Refrigeration - Frick		NEMA 4	
DEC 26' ±.06		DEC 31' ±.031		DEC 31' ±.031	
DEC 31' ±.031		FRAKT ±.172		FRAKT ±.172	
DR L STOKSLAGER		2/19/07		2/19/07	
CHK B HESS		2/20/07		2/20/07	
APPD A LUNG		SCALE 1:4		SCALE 1:4	

NOTICE TO PURCHASER		DATE CODE		REV	
REFERS TO CONTRACT FOR MATERIAL TO BE SUPPLIED BY FRICK COMPANY. THE AMOUNT OF SUCH MATERIAL IS NOT INCREASED BY ANYTHING SHOWN UPON THIS DRAWING.		23587		C	
YORK International Refrigeration - Frick		DWG NO		643D00019	
York International Refrigeration - Frick		WYB		WYB	
Woyneboro, PA 17268		SHEET 1		OF 4	

REVISION HISTORY		DATE	DR	CHK	CODE
ZONE	REV	DESCRIPTION			
B		UPDATED TERMINAL BLOCKS & REVISE ENCLOSURE	07/13/07	JAT	JLS

HOT
 ALL POWER SOURCES SHALL BE GROUNDED ON ONE SIDE
 -ISOLATED AND SEPARATED FROM OTHER INDUCTIVE LOADS SUCH AS LIGHTING CIRCUITS
 -USE MINIMUM #12 AWG FOR FEED

NEUTRAL
 EARTH BUSBAR AT POWER SOURCE
 ALL NEUTRALS ENTERING THIS ENCLOSURE SHALL BE TIED TOGETHER AT SOURCE NOT IN THIS ENCLOSURE
 THE NEUTRAL TO GROUND AT SOURCE

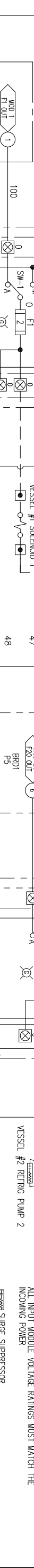
NOTE A:
 A SURGE SUPPRESSOR OR MOV TO BE INSTALLED ACROSS ALL INDUCTIVE LOADS IN CONTROL CENTER.
 NOTE B:
 ALL INPUT MODULE VOLTAGE RATINGS MUST MATCH THE INCOMING POWER
 SURGE SUPPRESSOR
 SUPPRESSOR SPECIFICATIONS:
 RC NETWORK CONSISTING OF A .1 MFD CAPACITOR, 600 VDC IN SERIES WITH A 47 OHM RESISTOR.
 USE ELECTRODE #R02031-5-6 OR EQUAL.
 VARISTOR
 METAL OXIDE VARISTOR (MOV) SPECIFICATIONS:
 GE #M130LA10A OR EQUAL FOR 120 VOLTS



TO LN 42
 TO LN 43
 TO LN 56
 TO LN 65
 TO LN 72
 TO LN 27
 TO LN 04
 TO LN 06
 TO LN 08

MOA MODULE #1
 MOA MODULE #2

VESSEL #1 SOLENOID 1
 VESSEL #1 SOLENOID 2
 VESSEL #1 REFRIG PUMP 1
 VESSEL #1 REFRIG PUMP 2
 VESSEL #2 SOLENOID 1
 VESSEL #2 SOLENOID 2
 VESSEL #2 REFRIG PUMP 1
 VESSEL #2 REFRIG PUMP 2
 VESSEL #1 LOW LEVEL WARNING (SAFE CLOSED)
 VESSEL #1 LOW LEVEL SHUTDOWN (SAFE CLOSED)
 VESSEL #1 HIGH LEVEL WARNING (SAFE CLOSED)
 VESSEL #1 HIGH LEVEL SHUTDOWN (SAFE CLOSED)
 VESSEL #1 OPERATING LEVEL 1 (SAFE CLOSED)
 VESSEL #1 OPERATING LEVEL 2 (SAFE CLOSED)
 VESSEL #2 HIGH LEVEL WARNING (SAFE CLOSED)
 VESSEL #2 HIGH LEVEL SHUTDOWN (SAFE CLOSED)
 VESSEL #2 OPERATING LEVEL 1 (SAFE CLOSED)
 VESSEL #2 OPERATING LEVEL 2 (SAFE CLOSED)
 AUX #1 OUTPUT
 AUX INPUT #1
 VESSEL #1 COMPRESSOR RUNNING (SAFE CLOSED)
 ALARM OUTPUT #1
 VESSEL #1 COMPRESSOR RUNNING (SAFE CLOSED)
 VESSEL #1 REFRIGERATION PUMP 1 (SAFE CLOSED)
 VESSEL #1 REFRIGERATION PUMP 2 (SAFE CLOSED)
 VESSEL #1 LOW LEVEL WARNING (SAFE CLOSED)
 VESSEL #1 LOW LEVEL SHUTDOWN (SAFE CLOSED)
 VESSEL #2 HIGH LEVEL WARNING (SAFE CLOSED)
 VESSEL #2 HIGH LEVEL SHUTDOWN (SAFE CLOSED)
 VESSEL #2 OPERATING LEVEL 1 (SAFE CLOSED)
 VESSEL #2 OPERATING LEVEL 2 (SAFE CLOSED)
 VESSEL #1 COMPRESSOR RUNNING (SAFE CLOSED)
 ALARM OUTPUT #1
 VESSEL #1 COMPRESSOR RUNNING (SAFE CLOSED)
 VESSEL #1 REFRIGERATION PUMP 1 (SAFE CLOSED)
 VESSEL #1 REFRIGERATION PUMP 2 (SAFE CLOSED)
 VESSEL #1 LOW LEVEL WARNING (SAFE CLOSED)
 VESSEL #1 LOW LEVEL SHUTDOWN (SAFE CLOSED)
 VESSEL #2 HIGH LEVEL WARNING (SAFE CLOSED)
 VESSEL #2 HIGH LEVEL SHUTDOWN (SAFE CLOSED)
 VESSEL #2 OPERATING LEVEL 1 (SAFE CLOSED)
 VESSEL #2 OPERATING LEVEL 2 (SAFE CLOSED)



ALTERNATE FAN WIRING
 TO FAN OUTPUT
 TO NEUTRAL

WIRING BY OTHERS- ALL WIRING ENTERING CONTROL CENTER (INCLUDING GROUND & NEUTRAL) TO BE #14 AWG STRANDED WIRES UNLESS SPECIFIED OTHERWISE.
 TERMINALS ON BACKPLATE
 TERMINALS IN MOTOR STARTER

NO THREE PHASE WIRING SHALL ENTER OR LEAVE PANEL OR BE RUN IN SAME CONDUIT AS ANY CONTROL WIRING ENTERING OR LEAVING PANEL
 NO SINGLE PHASE OVER 300 VOLTS SHALL ENTER OR LEAVE PANEL
 ALL WIRING TO BE #16 AWG STRANDED WIRE UNLESS SPECIFIED OTHERWISE.
 ALL NEUTRAL (EXP. 2 & 2A) WIRING TO BE WHITE UNLESS NOTED OTHERWISE

UNLESS OTHERWISE SPECIFIED DIMENSIONS ARE IN INCHES DO NOT SCALE

UNLESS OTHERWISE SPECIFIED TOLERANCES PER ASME Y14.5

DATE CODE 23587
 DWG NO 643D00019

YORK Refrigeration
 YORK INTERNATIONAL
 Refrigeration - Frick
 Weyersboro, PA 17268

TITLE
 CONTROL CENTER ASSY
 VESSEL CONTROL QLX
 NEMA 4

DR L. STOKSLAGER
 CHK B. HESS
 APPD A. LINDG
 DATE 2/19/07
 DATE 2/20/07
 SCALE NONE

REV C

SHEET 2 OF 4

SEE NOTE B

SEE NOTE B

SEE NOTE B

SEE NOTE B

SEE NOTE B

SEE NOTE B

SEE NOTE B

SEE NOTE B

SEE NOTE B

SEE NOTE B

SEE NOTE B

SEE NOTE B

SEE NOTE B

SEE NOTE B

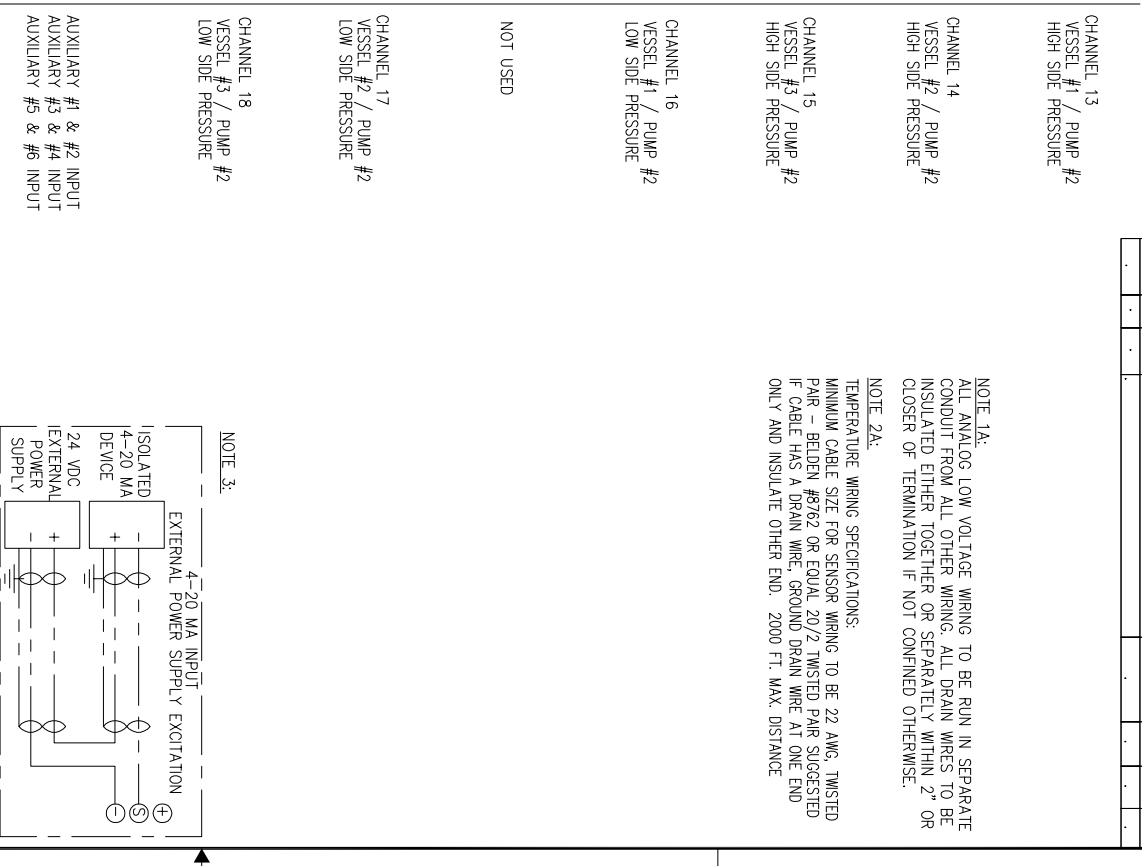
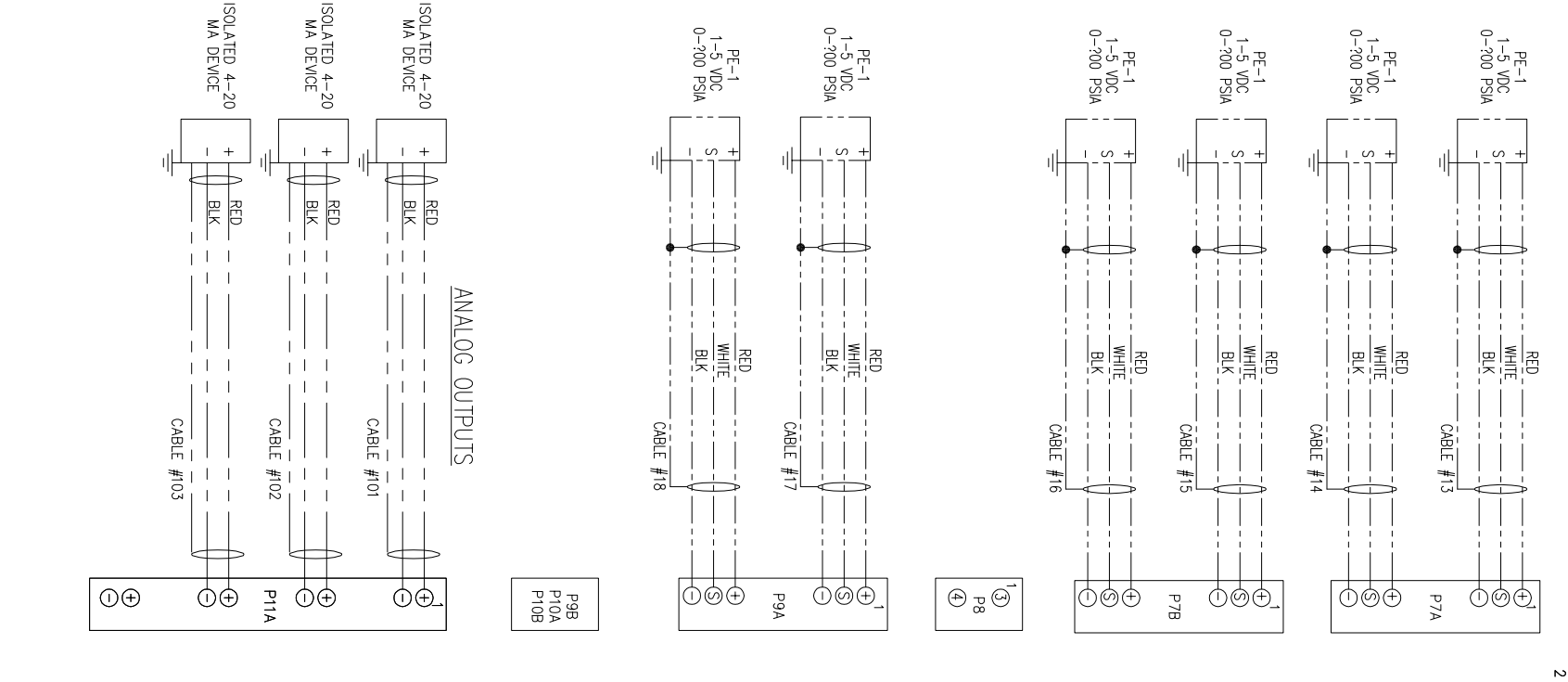
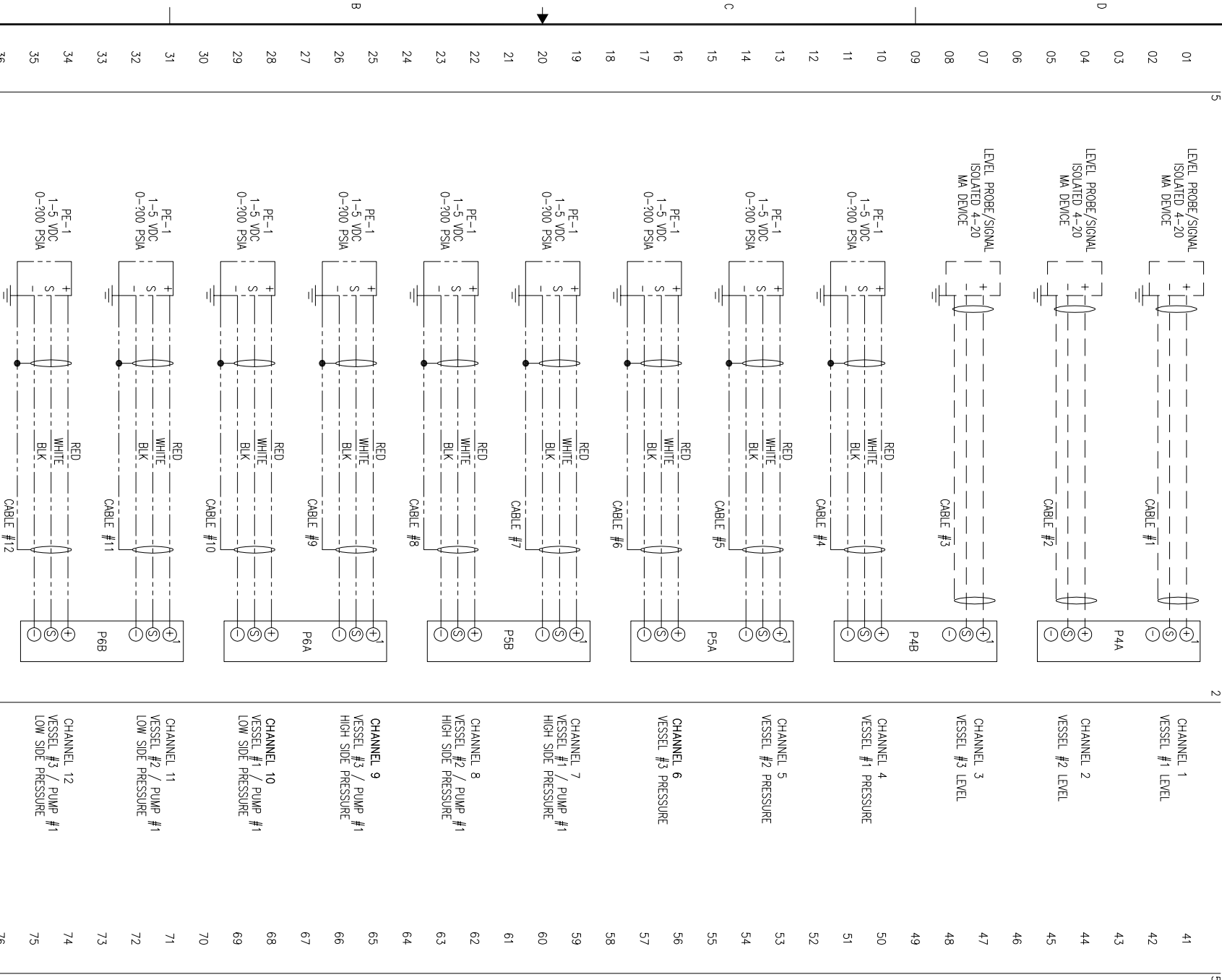
SEE NOTE B

REVISION HISTORY							
ZONE	REV	ECN	DESCRIPTION	DATE	DR	CHK	APPD

ANALOG BOARD #1

NOTE 1A:
ALL ANALOG LOW VOLTAGE WIRING TO BE RUN IN SEPARATE CONDUIT FROM ALL OTHER WIRING. ALL DRAIN WIRES TO BE INSULATED EITHER TOGETHER OR SEPARATELY WITHIN 2" OR CLOSER OF TERMINATION IF NOT CONTAINED OTHERWISE.

NOTE 2A:
TEMPERATURE WIRING SPECIFICATIONS:
MINIMUM CABLE SIZE FOR SENSOR WIRING TO BE 22 AWG, TWISTED PAIR - BELDEN #8762 OR EQUAL 20/2 TWISTED PAIR SUGGESTED IF CABLE HAS A DRAIN WIRE, GROUND DRAIN WIRE AT ONE END ONLY AND INSULATE OTHER END. 2000 FT. MAX. DISTANCE

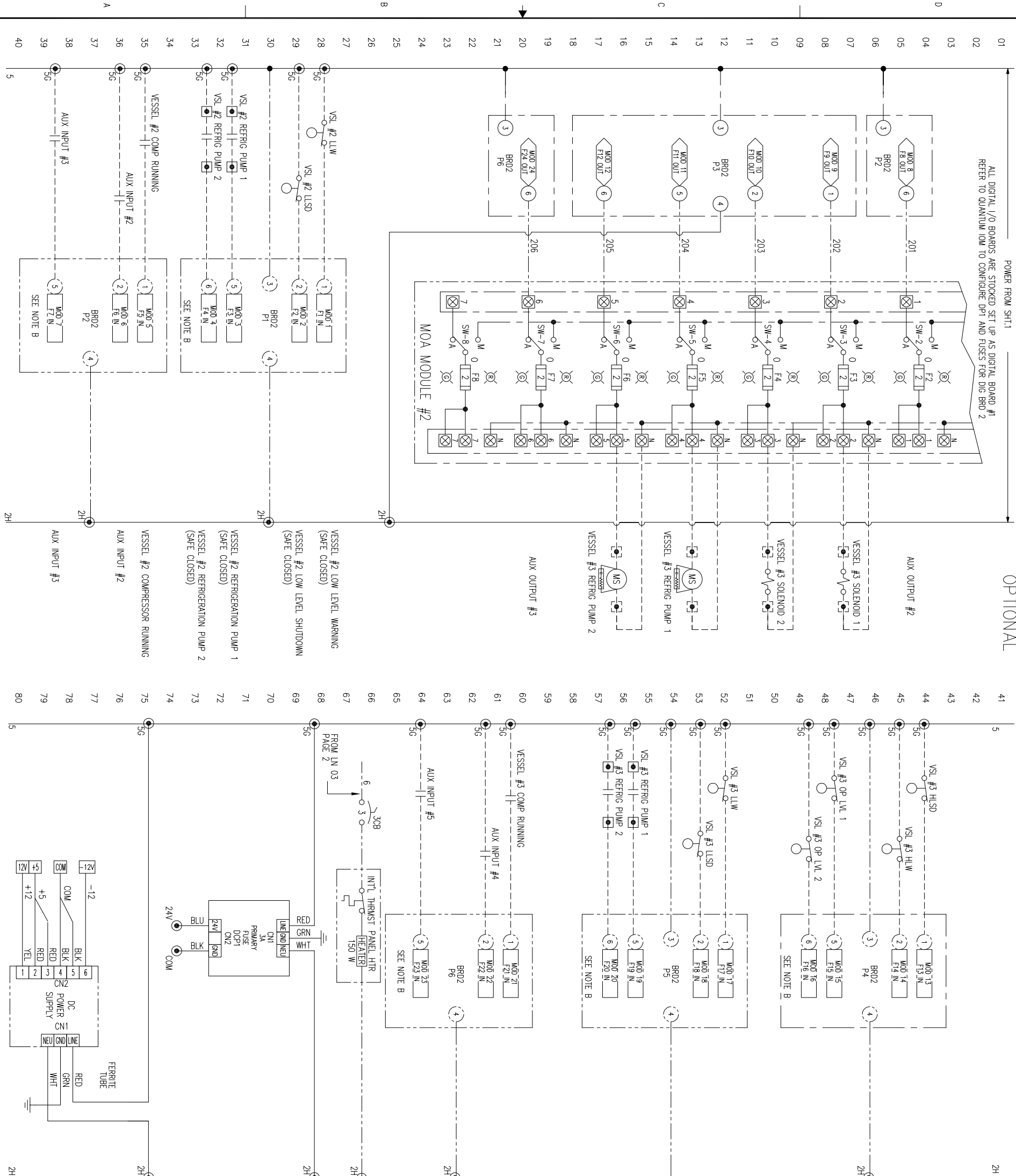


YORK Refrigeration		York International Refrigeration - York, PA 17288	
PURCHASER: YORK INTERNATIONAL		PURCH ORDER NO: YORK0000000000	
FRICK ORDER NO: 23587		TITLE: CONTROL CENTER ASSY VESSEL CONTROL QLX NEMA 4	
UNLESS OTHERWISE SPECIFIED DIMENSIONS ARE IN INCHES. DO NOT SCALE.			
UNLESS OTHERWISE SPECIFIED TOLERANCES PER ASME Y14.5		DATE CODE: 23587	
DEC 26 ± .01	DEC 31 ± .005	FRAC 1 ± 1/64	ANGLE ± 1/2
DR. L. STOKSLAGER		DATE: 2/19/07	
CHK. B. HESS		DATE: 2/20/07	
APPD. L. LOMB		SCALE: D	
SHEET 3 OF 4		DWG NO: 643D00019	
REV: C		REV: C	

NOTICE TO PURCHASER:
REFER TO CONTRACT FOR MATERIAL TO BE SUPPLIED BY FRICK COMPANY. THE AMOUNT OF SUCH MATERIAL IS NOT INCREASED BY ANYTHING SHOWN UPON THIS DRAWING.

DIGITAL BOARD #2 OPTIONAL

POWER FROM SH1.1
ALL DIGITAL I/O BOARDS ARE STOCKED SET UP AS DIGITAL BOARD #1
REFER TO QUANTUM IOM TO CONFIGURE DPT AND FUSES FOR DIG BRD 2



**

VESSEL #3 HIGH LEVEL SHUTDOWN
(SAFE CLOSED)

VESSEL #3 HIGH LEVEL WARNING
(SAFE CLOSED)

VESSEL #3 OPERATING LEVEL 1
(SAFE CLOSED)

VESSEL #3 OPERATING LEVEL 2
(SAFE CLOSED)

VESSEL #3 SOLENOID 1
(SAFE CLOSED)

VESSEL #3 SOLENOID 2
(SAFE CLOSED)

VESSEL #3 REFRIG PUMP 1
(SAFE CLOSED)

VESSEL #3 REFRIG PUMP 2
(SAFE CLOSED)

VESSEL #3 COMPRESSOR RUNNING
(SAFE CLOSED)

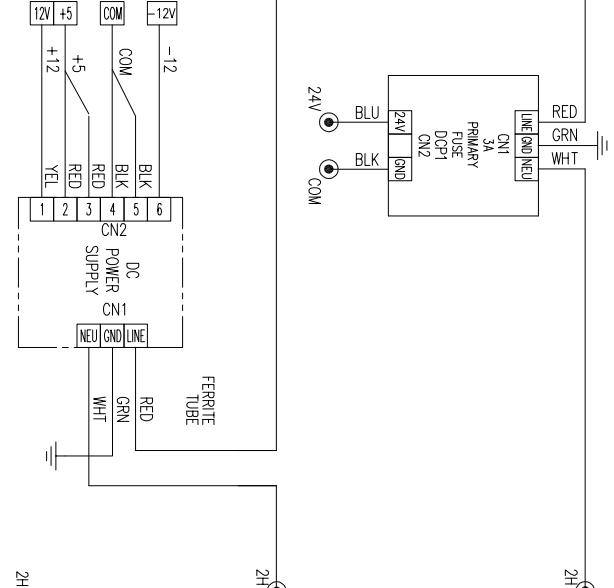
AUX INPUT #1
AUX INPUT #2
AUX INPUT #3

REVISION HISTORY		DATE	DR	CHK	APPD		
ZONE	REV	ECN	DESCRIPTION	07/13/07	JMT	JLS	JLS
B			UPDATED TERM BLOCKS & REVISE ENCLOSURE	05/21/08	JLS	BSH	JL
C			UPDATED DRAWING TO CORRECT TEXT.				

NOTE A:
A SURGE SUPPRESSOR OR MOV TO BE INSTALLED ACROSS ALL INDUCTIVE LOADS IN CONTROL CENTER.
ESSENTIAL SURGE SUPPRESSOR
SURPRESSOR SPECIFICATIONS:
RC NETWORK CONSISTING OF A 1.1 MFD CAPACITOR, 600 VDC IN SERIES WITH A 47 OHM RESISTOR.
USE ELECTRODE #R0203-3-6 OR EQUAL.
VARISTOR
METAL OXIDE VARISTOR (MOV) SPECIFICATIONS:
CE #M30L1010A OR EQUAL FOR 115 VOLTS
CE #W250L1010A OR EQUAL FOR 230 VOLTS

--- INDICATES DEVICES SUPPLIED ONLY
--- WHEN OPTIONAL OR REQUIRED
--- WIRING BY OTHERS - ALL WIRING ENTERING CONTROL CENTER (INCLUDING GROUND & NEUTRAL) TO BE #14 AWG STRANDED WIRES UNLESS SPECIFIED OTHERWISE.
● REPRESENTS STARTER TERMINALS
● TERMINALS IN CONTROL CENTER
NO THREE PHASE WIRING SHALL ENTER OR LEAVE QUANTUM PANEL OR BE RUN IN SAME CONDUIT AS ANY QUANTUM CONTROL WIRING ENTERING OR LEAVING MICRO PANEL
NO SINGLE PHASE OVER 300 VOLTS SHALL ENTER OR LEAVE QUANTUM PANEL
ALL CONTROL CENTER WIRING TO BE #16 AWG STRANDED WIRE UNLESS SPECIFIED OTHERWISE.

OPTIONAL:
PANEL HEATER W/INTERNAL THERMOSTAT
THERMOSTAT CLOSED AT 40°F±5,
THERMOSTAT OPEN AT 55°F±5



PURCHASER		NOTICE TO PURCHASER	
FRICK ORD NO		REFERS TO CONTACT FOR MATERIAL TO BE SUPPLIED BY FRICK COMPANY. THE AMOUNT OF SUCH MATERIAL IS NOT INCREASED BY ANYTHING SHOWN UPON THIS DRAWING.	
UNLESS OTHERWISE SPECIFIED DIMENSIONS ARE IN INCHES DO NOT SCALE		York International Refrigeration Weyersboro, PA 17268	
UNLESS OTHERWISE SPECIFIED TOLERANCES PER ASME Y14.5		TITLE	
DEC 24 ±.01	DEC 24 ±.005	FRACT	ANGLE
±.01	±.005	±.1/64	±.1/2
DR. I. STODOLSKER	2/19/07	02/19/07	
CHK. B. HESS	2/20/07		
APPD. J. LEMK			
CODE	SCALE	DATE CODE	QWB NO
		D 23587	643D00019
		SHEET 4	OF 4
		REV	C