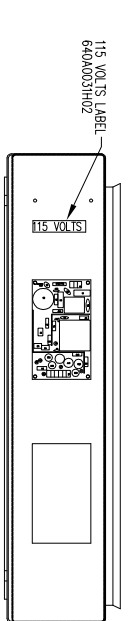
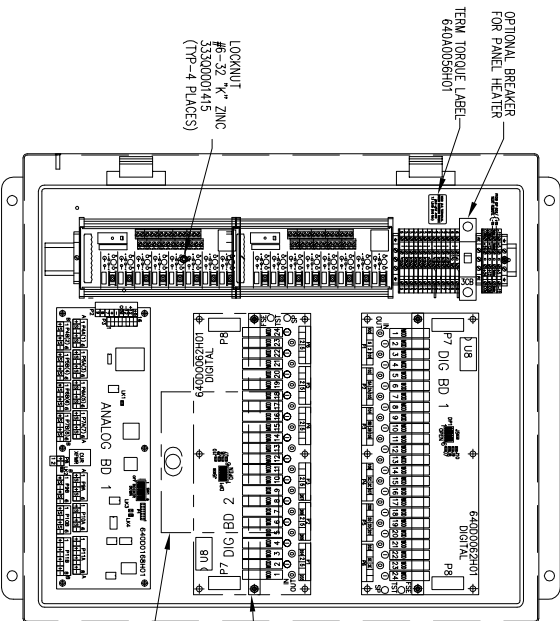


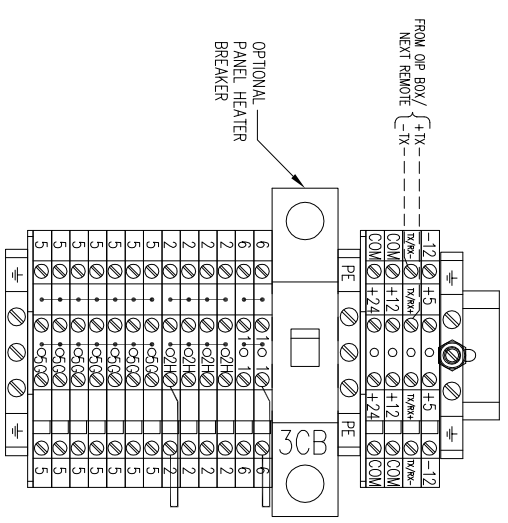
REVISION HISTORY		DATE	DR	CHK	APPD
ZONE	REV	DESCRIPTION			
C		UPDATED TERMINAL BLOCKS & REVISE ENCLOSURE	07/13/07	JAT	JLS



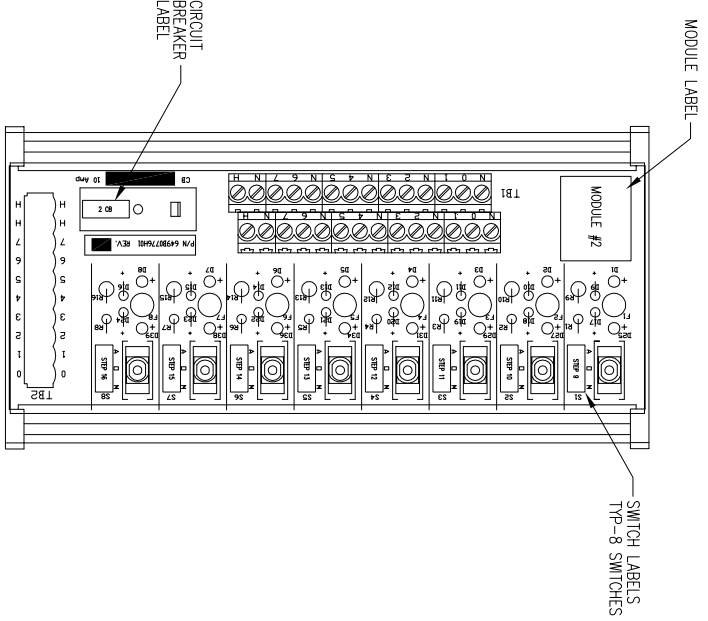
LOOK NUMBER #6-11109040174
 SCR PHSS #6-33300001212
 STANDOFF #6 X 1/25-33300001201
 LOCKNUT #6-32 "X" ZINC-3330000415
 NYLON NUT-3330001236
 NYLON SPACER-649A0224401



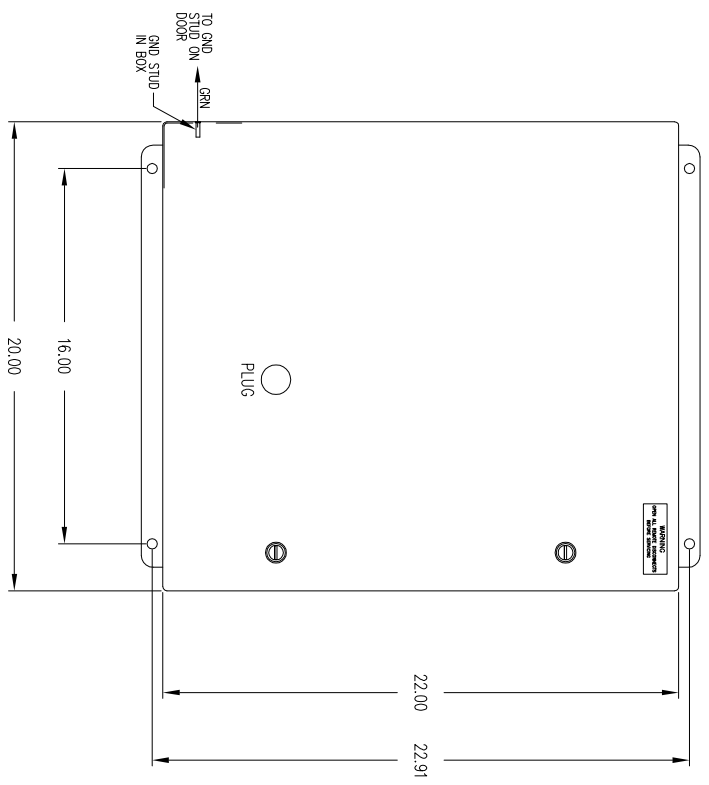
BACKPLANE OF ENCLOSURE WITH DOOR OPEN



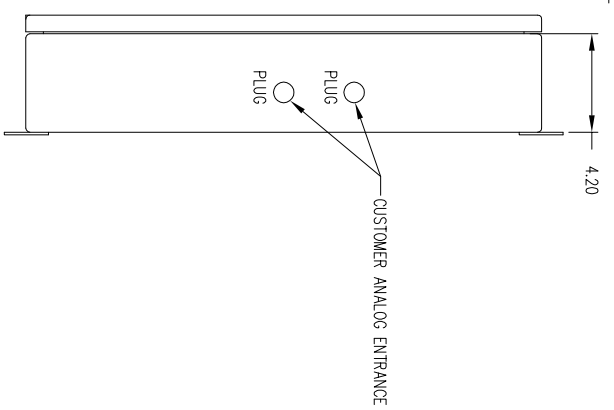
TERMINAL BLOCKS SCALE 1:1



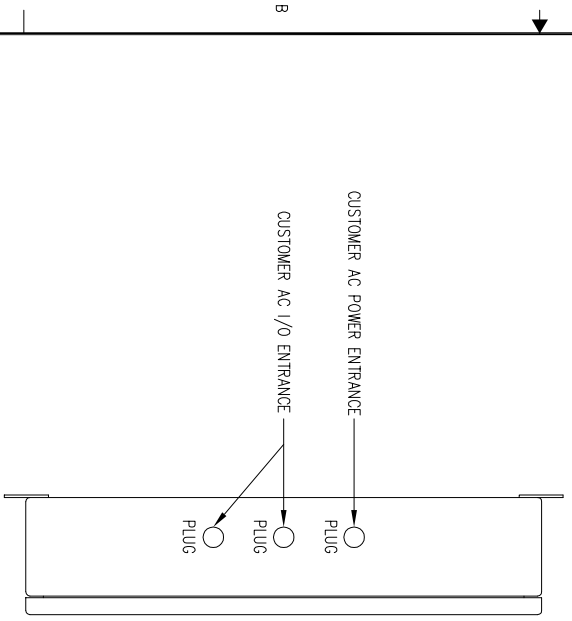
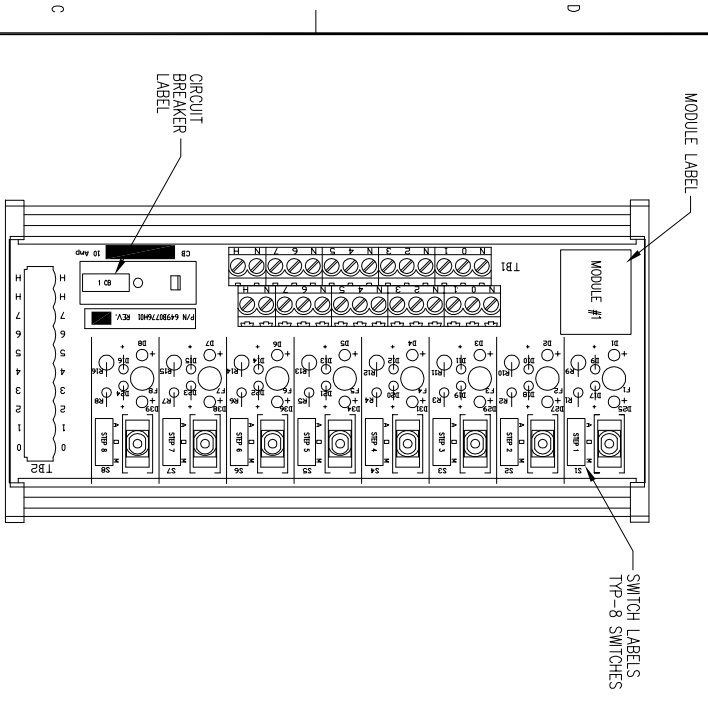
VIEW OF INSIDE DOOR



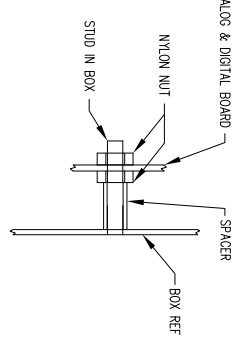
INSIDE RIGHT PLANE OF ENCLOSURE



CUSTOMER ANALOG ENTRANCE



POWER SUPPLY MOUNTING SCALE 1:1



GCU BOARD MOUNTING SCALE 1:1

PURCHASER		PURCH. ORD NO		TITLE	
FRICK ORD NO		FRICK ORD NO		CONTROL CENTER ASSEMBLY CONDENSER CONTROL Q1X	
UNLESS OTHERWISE SPECIFIED DIMENSIONS ARE IN INCHES DO NOT SCALE		YORK International Refrigeration York International Weyersboro, PA 17268		NOTICE TO PURCHASER REFER TO CONTRACT FOR MATERIAL TO BE SUPPLIED BY FRICK COMPANY. THE AMOUNT OF SUCH MATERIAL IS NOT INCREASED BY ANYTHING SHOWN UPON THIS DRAWING.	
DATE	BY	DATE	BY	DATE	BY
DEC 26 + .08	DEC 31 + .031	2/19/07 + 1/25	2/20/07 + 1/2	2/20/07	2/20/07
DR. I. STOKSLAGER	CHK. B. HESS	APRD. A. LUNG	SCALE 1:1	SIZE D	DATE CODE 23587
PURCHASE ORDER NO		PURCHASE ORDER NO		PURCHASE ORDER NO	
643D00018		643D00018		643D00018	
REV D		REV D		REV D	

ZONE	REV	EEN	DESCRIPTION	DATE	DR	CHK	CODE
A	·	·	ADDED WIRE 56 TO LINE 44.	4/19/07	JLS	BSH	JL
B	·	·	ADDED 24VDC POWER SUPPLY OPTION.	4/19/07	JLS	BSH	JL
C	·	·	UPDATED TERMINAL BLOCKS & REVISE ENCLOSURE	07/13/07	JAT	JLS	JLS

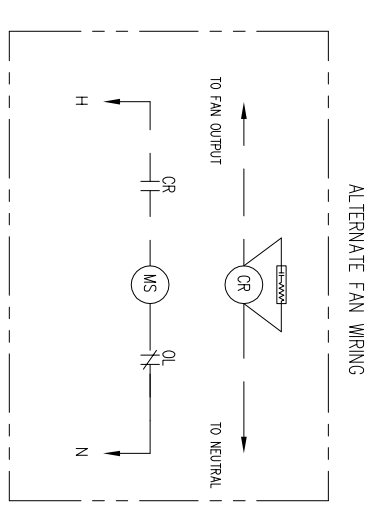
REVISION HISTORY

NOTE A:
A SURGE SUPPRESSOR OR MOV TO BE INSTALLED ACROSS ALL INDUCTIVE LOADS IN CONTROL CENTER.

NOTE B:
ALL INPUT MODULE VOLTAGE RATINGS MUST MATCH THE INCOMING POWER.

SURGE SUPPRESSOR
SUPPRESSOR SPECIFICATIONS:
RC NETWORK CONSISTING OF A .1 MFD CAPACITOR, 600 VDC IN SERIES WITH A 47 OHM RESISTOR.
USE ELECTRODE #R02031-5-6 OR EQUAL.

VARISTOR
METAL OXIDE VARISTOR (MOV) SPECIFICATIONS:
GE #M130LA10A OR EQUAL FOR 120 VOLTS.



— WIRING BY OTHERS— ALL WIRING ENTERING CONTROL CENTER (INCLUDING GROUND & NEUTRAL) TO BE #14 AWG STRANDED WIRES UNLESS SPECIFIED OTHERWISE.

● TERMINALS ON BACKPLATE

■ TERMINALS IN MOTOR STARTER

NO THREE PHASE WIRING SHALL ENTER OR LEAVE PANEL OR BE RUN IN SAME CONDUIT AS ANY CONTROL WIRING ENTERING OR LEAVING PANEL.

NO SINGLE PHASE OVER 300 VOLTS SHALL ENTER OR LEAVE PANEL.

ALL WIRING TO BE #16 AWG.

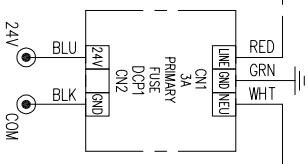
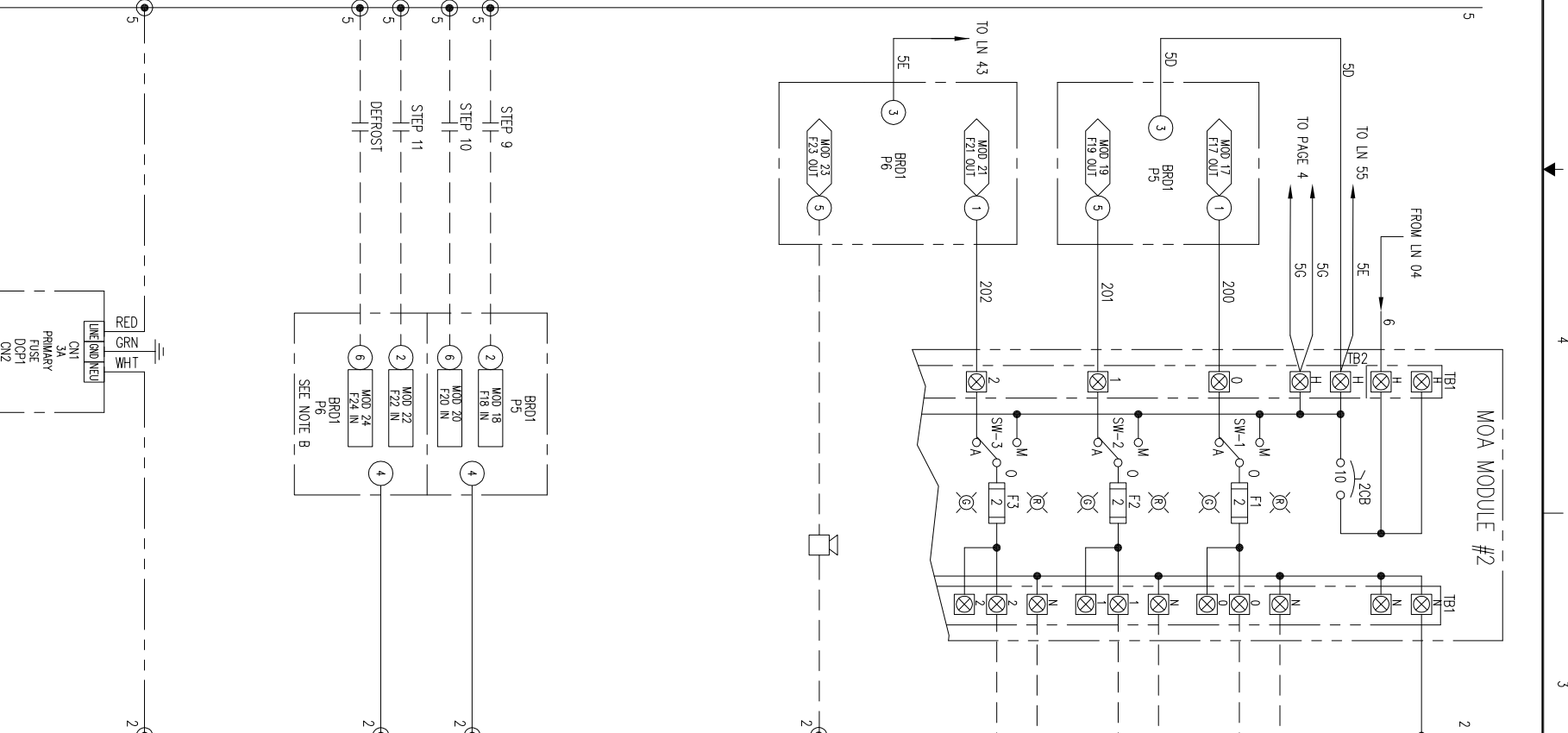
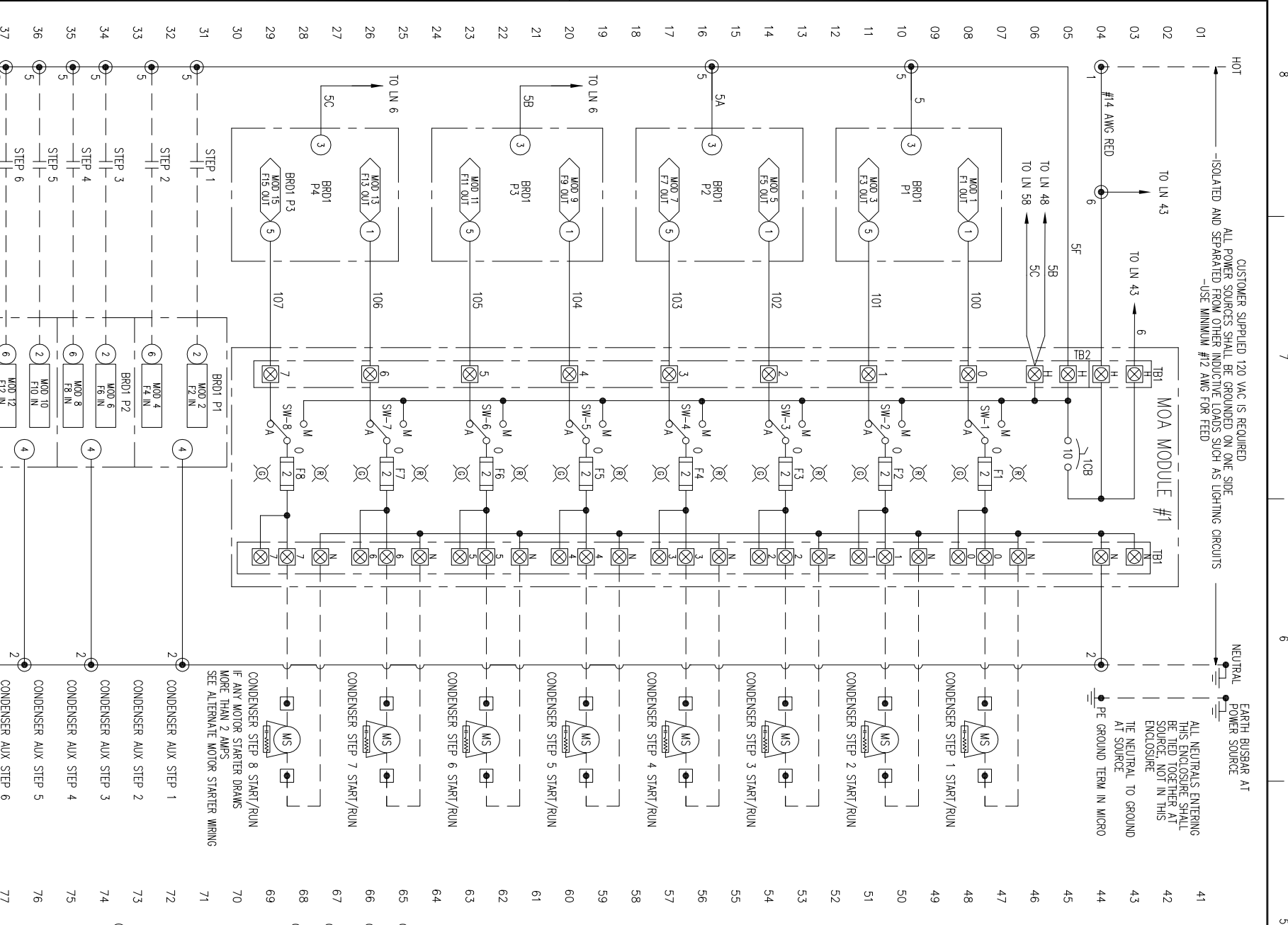
STRANDED WIRE UNLESS SPECIFIED OTHERWISE.

ALL NEUTRAL (EXP. 2 & 2A) WIRING TO BE WHITE UNLESS NOTED OTHERWISE.

24VDC POWER SUPPLY OPTION
24VDC @ 27A MAX
65W MAX

UNLESS OTHERWISE SPECIFIED		DIMENSIONS ARE IN INCHES	
DO NOT SCALE		DO NOT SCALE	
DEC 24'	DEC 34'	INCH	MM
± .06	± .031	± 1/16"	± 1/2
TOLERANCES PER ASME			
DR. L. STODOLSKER	2/7/07	DATE CODE	2/7/07
CHK. B. HESS	2/20/07	DRW. NO.	643D00018
APPD. L. LOM		REV	D
CODE	SCALE	NONE	SHEET 2 OF 4

YORK Refrigeration
CONTROL CENTER ASSY
CONDENSER CONTROL Q1X
NEMA 4



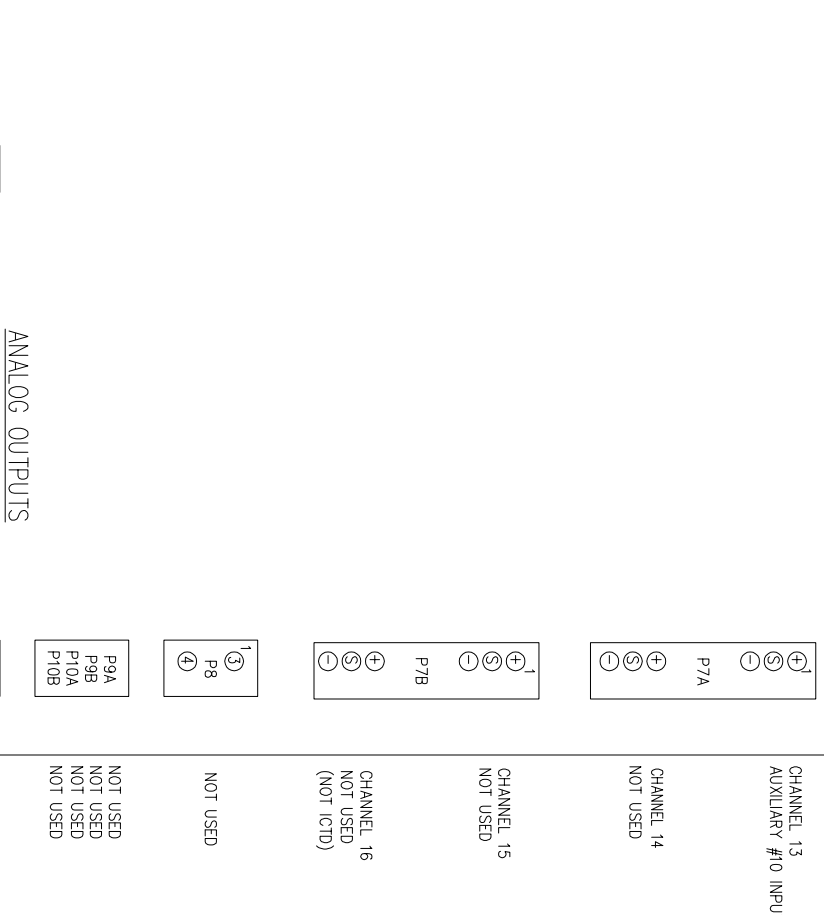
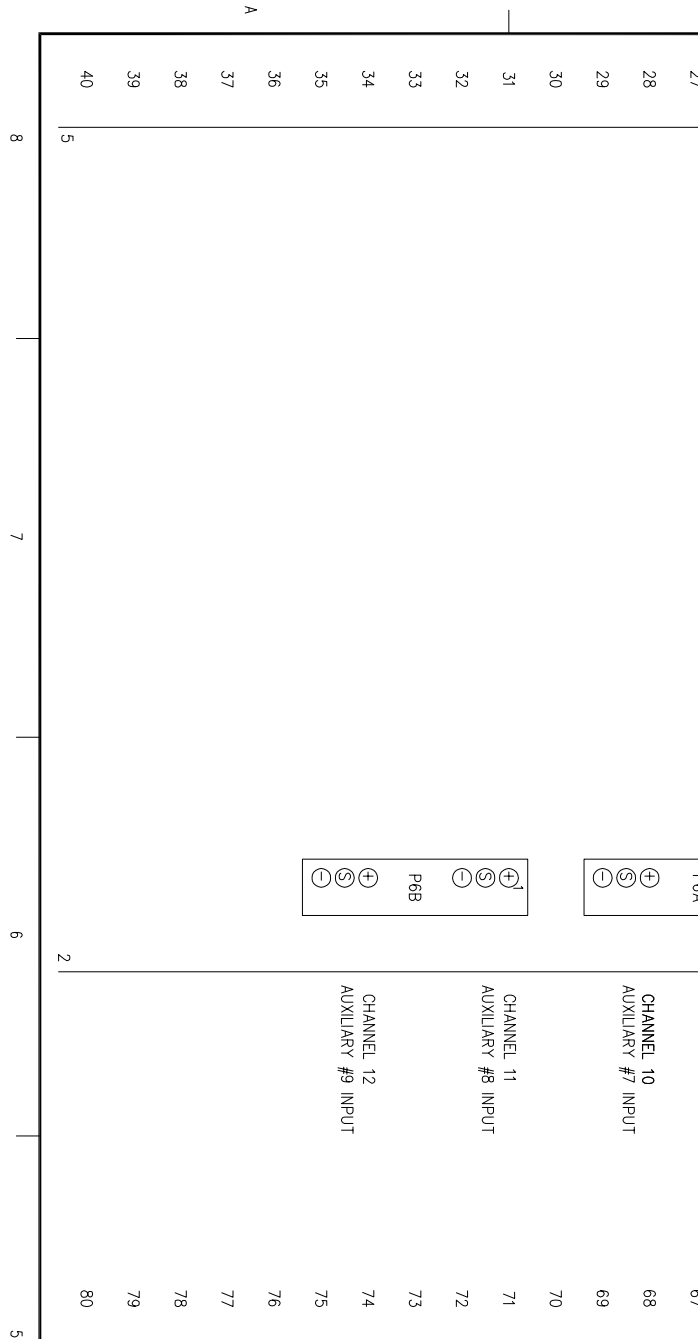
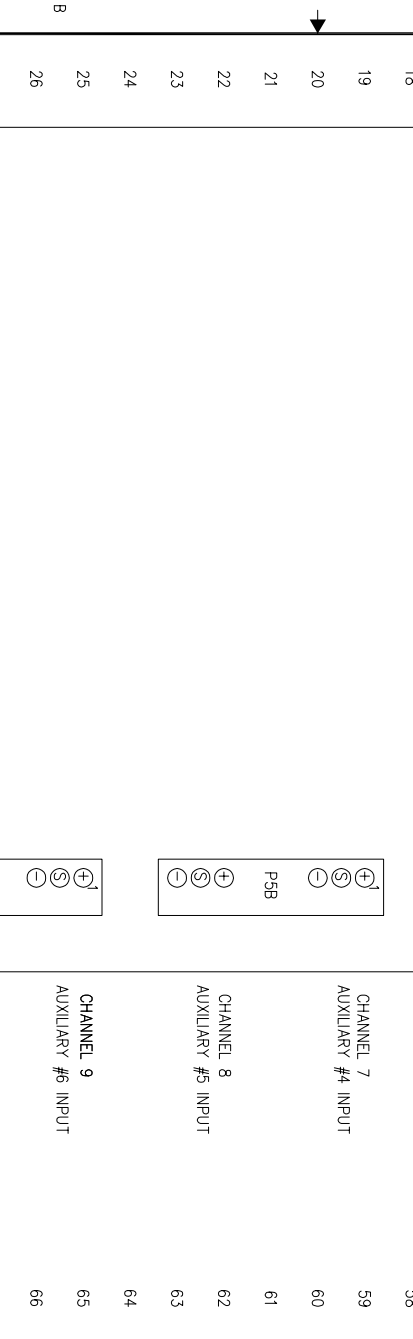
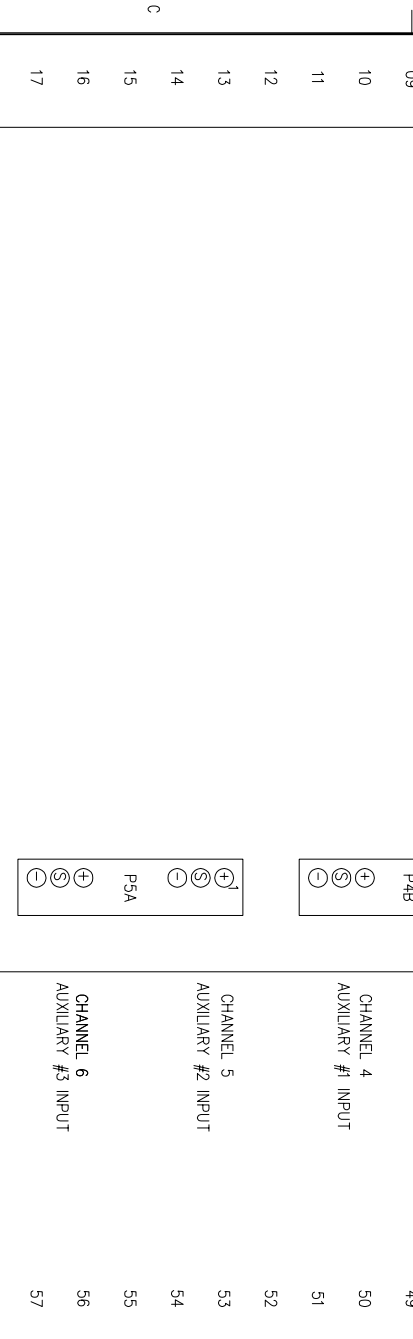
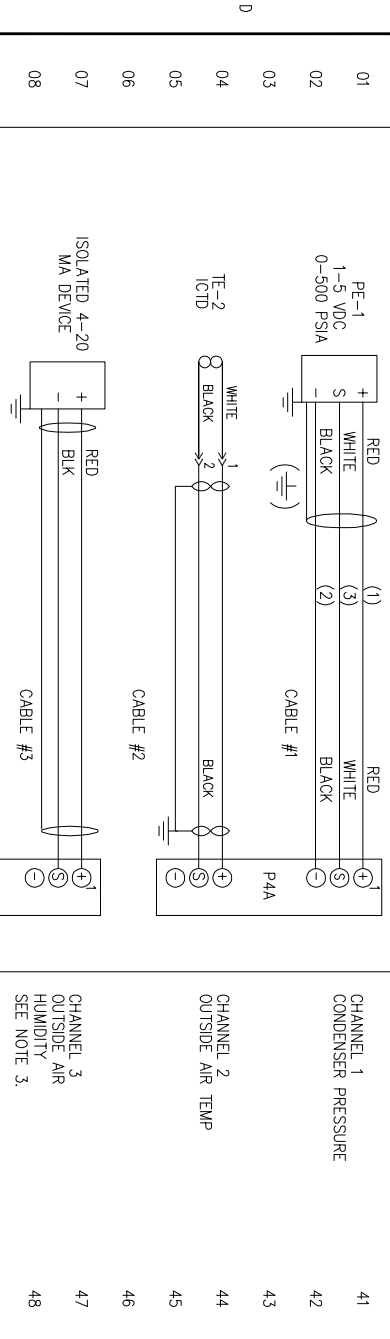
8
7
6
5
4
3
2
1

8
7
6
5
4
3
2
1

REVISION HISTORY			
ZONE	REV	ECN	DESCRIPTION
D			UPDATED NOTES ON DRAWING

DATE	DR	CHK	APPD
07/26/07	JAT	J.S	J.S

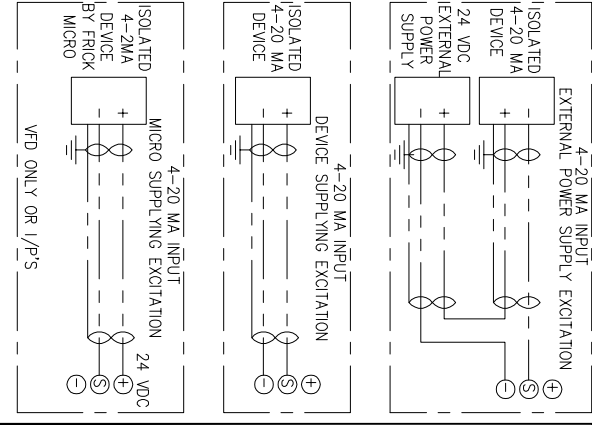
ANALOG BOARD #1



NOTE 1A:
ALL ANALOG LOW VOLTAGE WIRING TO BE RUN IN SEPARATE CONDUIT FROM ALL OTHER WIRING. ALL DRAIN WIRES TO BE INSULATED EITHER TOGETHER OR SEPARATELY WITHIN 2" OR CLOSER OF TERMINATION IF NOT CONFINED OTHERWISE.

NOTE 2A:
TEMPERATURE WIRING SPECIFICATIONS:
MINIMUM CABLE SIZE FOR SENSOR WIRING TO BE 22 AWG, TWISTED PAIR - BELDEN #8762 OR EQUAL 20/2 TWISTED PAIR SUGGESTED IF CABLE HAS A DRAIN WIRE, GROUND DRAIN WIRE AT ONE END ONLY AND INSULATE OTHER END. 2000 FT. MAX. DISTANCE.

NOTE 3:



PURCHASER
YORK INTERNATIONAL
York International Refrigeration -
York, PA 17368

FRICK ORD NO
UNLESS OTHERWISE SPECIFIED
DIMENSIONS ARE IN INCHES
DO NOT SCALE

FRICK ORD NO
PURCH ORDER NO
YORK INTERNATIONAL

NOTICE TO PURCHASER
REFERS TO CONTRACT FOR MATERIAL
TO BE SUPPLIED BY FRICK COMPANY.
THE AMOUNT OF SUCH MATERIAL IS
NOT INCREASED BY ANYTHING
SHOWN UPON THIS DRAWING.

UNIT WEIGHTS
DIMENSIONS PER UNIT 'S

DEC 26'	DEC 36'	FRACT	ANGLE
± .01	± .005	± 1/64"	± 1/2°

DR: L. STOKSLAND
CHK: B. HESS
APRD: L. LUNG

DATE CODE: 2/19/07
DATE CODE: 2/20/07

SIZE: D
CODE: 23587
SCALE: 1/8"

DATE CODE: 643D0018
DATE CODE: D

YORK Refrigeration
York International Refrigeration -
York, PA 17368

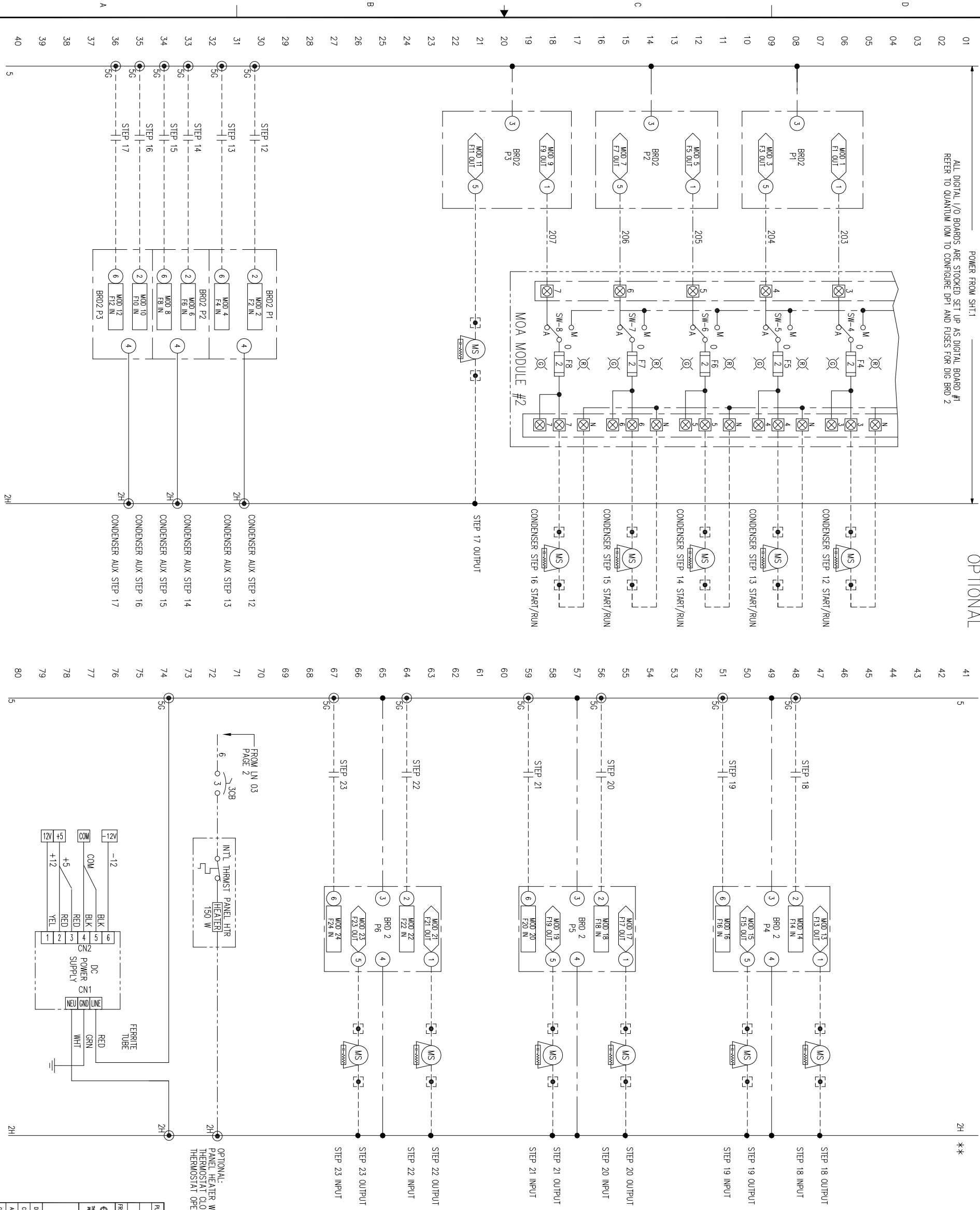
TITLE
CONTROL CENTER ASSY
CONDENSER CONTROL Q1X
NEMA 4

DATE CODE: 23587
SCALE: 1/8"

REVISION HISTORY					
ZONE	REV	ECN	DESCRIPTION	DATE	DR
C			UPDATED TERM BLOCKS & REVISE ENCLOSURE	07/13/07	JMT

DIGITAL BOARD #2 OPTIONAL

POWER FROM SH1.1
ALL DIGITAL I/O BOARDS ARE STOCKED SET UP AS DIGITAL BOARD #1
REFER TO QUANTUM IOM TO CONFIGURE DP1 AND FUSES FOR BRD 2



NOTE A:
A SURGE SUPPRESSOR OR MOV TO BE INSTALLED ACROSS ALL INDUCTIVE LOADS IN CONTROL CENTER.
EXCESS SURGE SUPPRESSOR
SUPPRESSOR SPECIFICATIONS:
RC NETWORK CONSISTING OF A 1.1 MFD CAPACITOR, 600 VDC IN SERIES WITH A 47 OHM RESISTOR.
USE ELECTRODE #R0203-3-6 OR EQUAL.
VARISTOR
METAL OXIDE VARISTOR (MOV) SPECIFICATIONS:
CE #M30L10A OR EQUAL FOR 115 VOLTS
CE #V250L10A OR EQUAL FOR 230 VOLTS

--- INDICATES DEVICES SUPPLIED ONLY
--- WHEN OPTIONAL OR REQUIRED
--- WIRING BY OTHERS - ALL WIRING ENTERING CONTROL CENTER (INCLUDING GROUND & NEUTRAL) TO BE #14 AWG STRANDED WIRES UNLESS SPECIFIED OTHERWISE.
● REPRESENTS STARTER TERMINALS
● TERMINALS IN CONTROL CENTER
NO THREE PHASE WIRING SHALL ENTER OR LEAVE QUANTUM PANEL OR BE RUN IN SAME CONDUIT AS ANT QUANTUM CONTROL WIRING ENTERING OR LEAVING MICRO PANEL.
NO SINGLE PHASE OVER 300 VOLTS SHALL ENTER OR LEAVE QUANTUM PANEL.
ALL CONTROL CENTER WIRING TO BE #16 AWG STRANDED WIRE UNLESS SPECIFIED OTHERWISE.

OPTIONAL:
PANEL HEATER W/INTERNAL THERMOSTAT
THERMOSTAT CLOSED AT 40°F±.5,
THERMOSTAT OPEN AT 55°F±.5

PURCHASER		PURCH. ORD NO		NOTE TO PURCHASER REFERS TO CONTRACT FOR MATERIAL TO BE SUPPLIED BY FRICK COMPANY. THE AMOUNT OF SUCH MATERIAL IS NOT INCREASED BY ANYTHING SHOWN UPON THIS DRAWING.	
FRICK ORD NO		UNLESS OTHERWISE SPECIFIED DIMENSIONS ARE IN INCHES DO NOT SCALE		York International Refrigeration Wynnebboro, PA 17268	
UNLESS OTHERWISE SPECIFIED TOLERANCES PER ASME B1.1		TITLE		CONTROL CENTER ASSY CONDENSER CONTROL QIX NEMA 4	
DEC 2K ±.01	DEC 3K FRACT ±.1/4	DATE CODE	DATE	DRG NO	REV
DR. L. STODOLSKER	2/7/07	D	2/20/07	643D00018	D
CHK. B. HESS	2/20/07	SCALE		SHEET 4 OF 4	