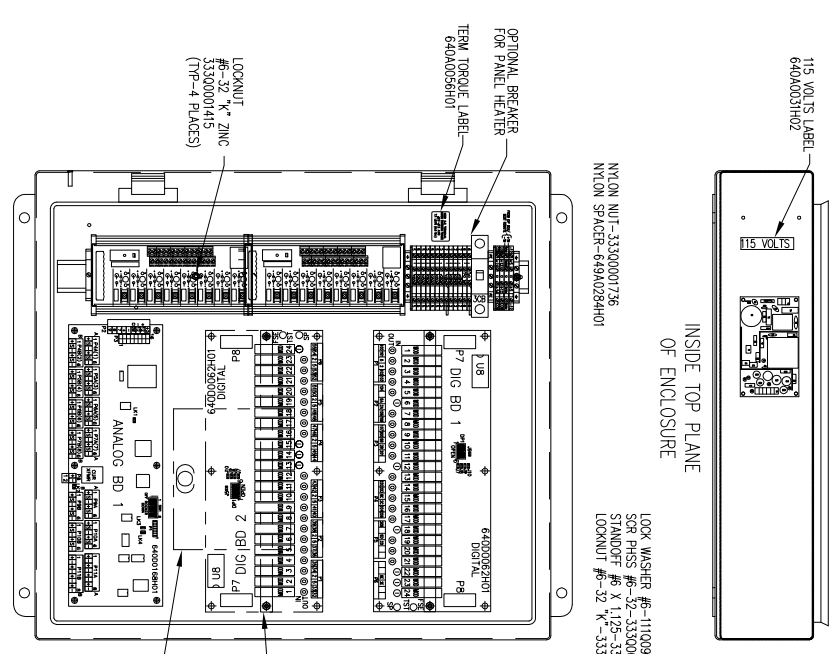
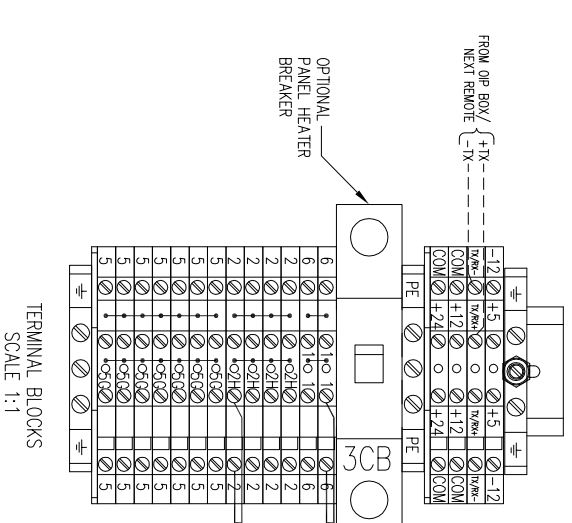


| REVISION HISTORY | | | | DATE | DR | CHK | APPD |
|------------------|-----|-----|--|----------|-----|-----|------|
| ZONE | REV | EQU | DESCRIPTION | 5/02/07 | JLS | BSH | JLS |
| ALL | C | | ADDED TERMINALS TO DRAWING FOR OPTION | 07/13/07 | JAT | JLS | JLS |
| | D | | UPDATED TERMINAL BLOCKS & REVISE ENCLOSURE | | | | |

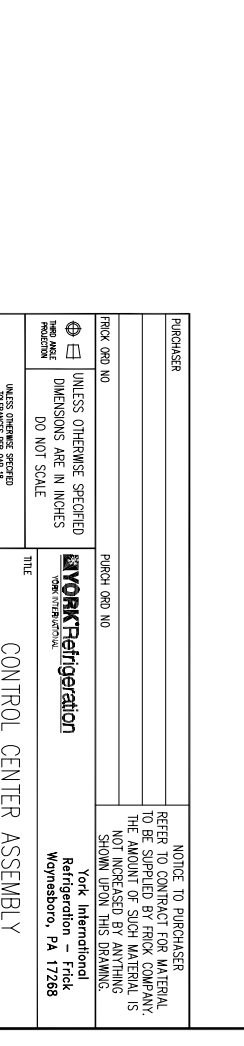
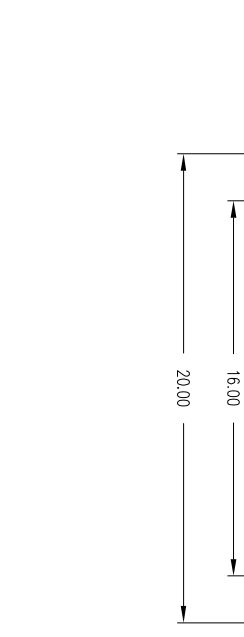
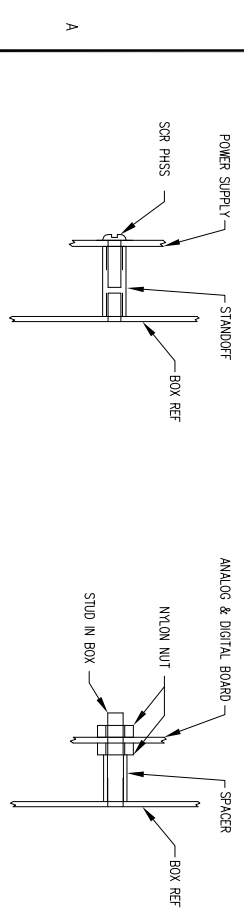
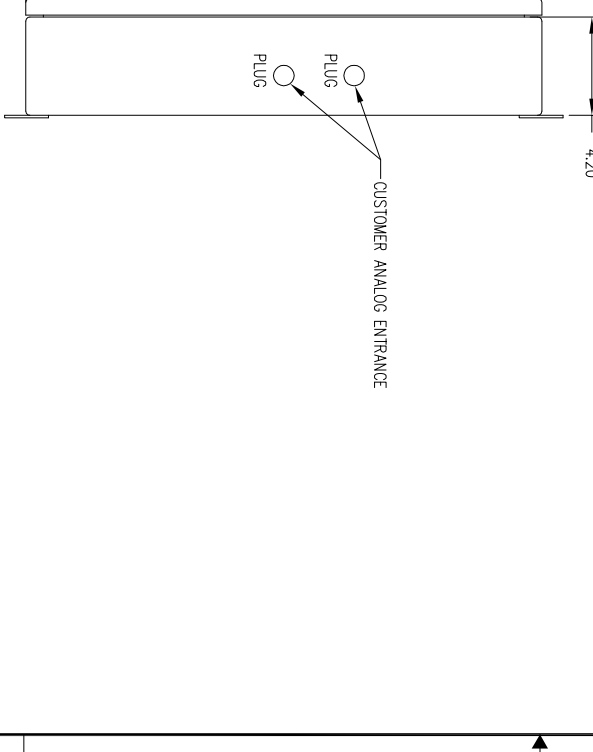
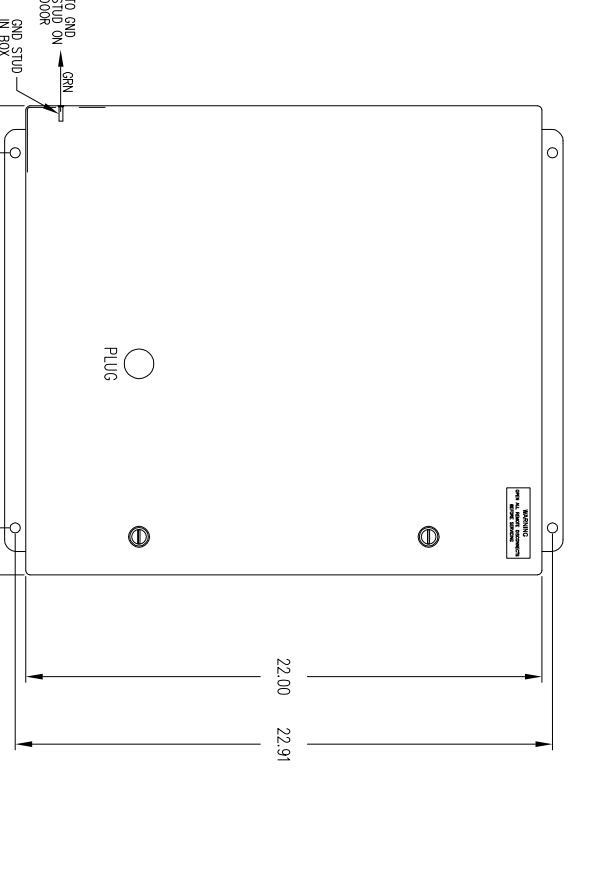
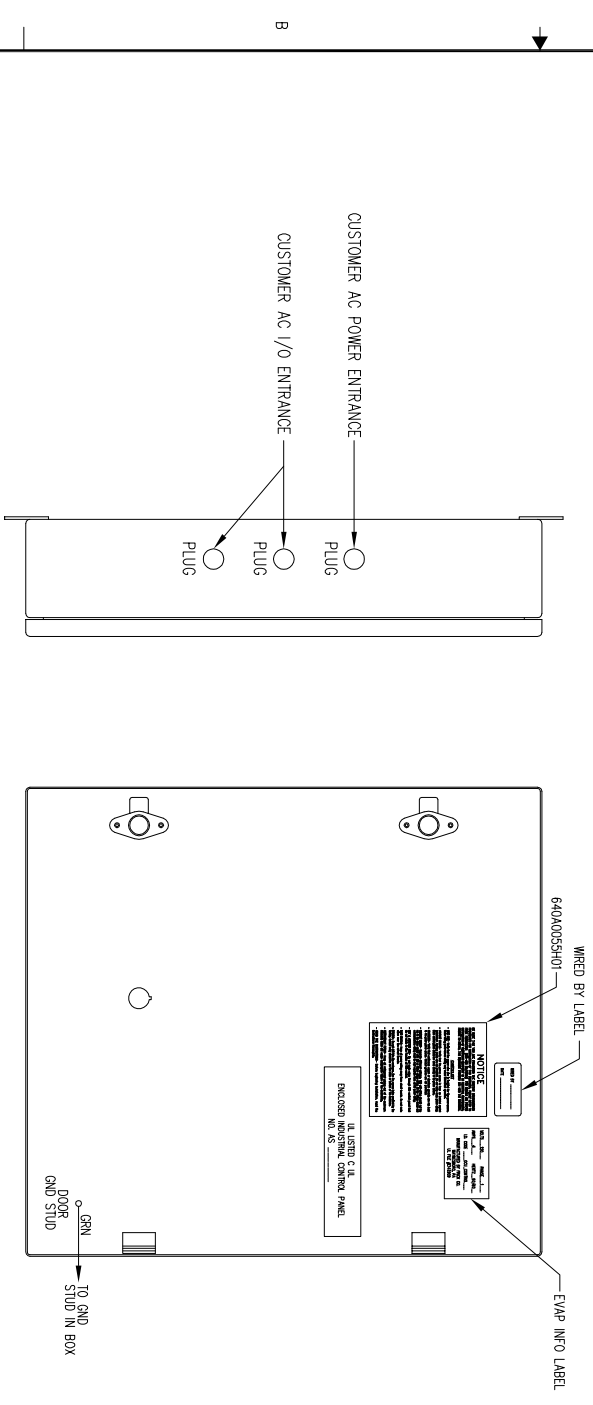
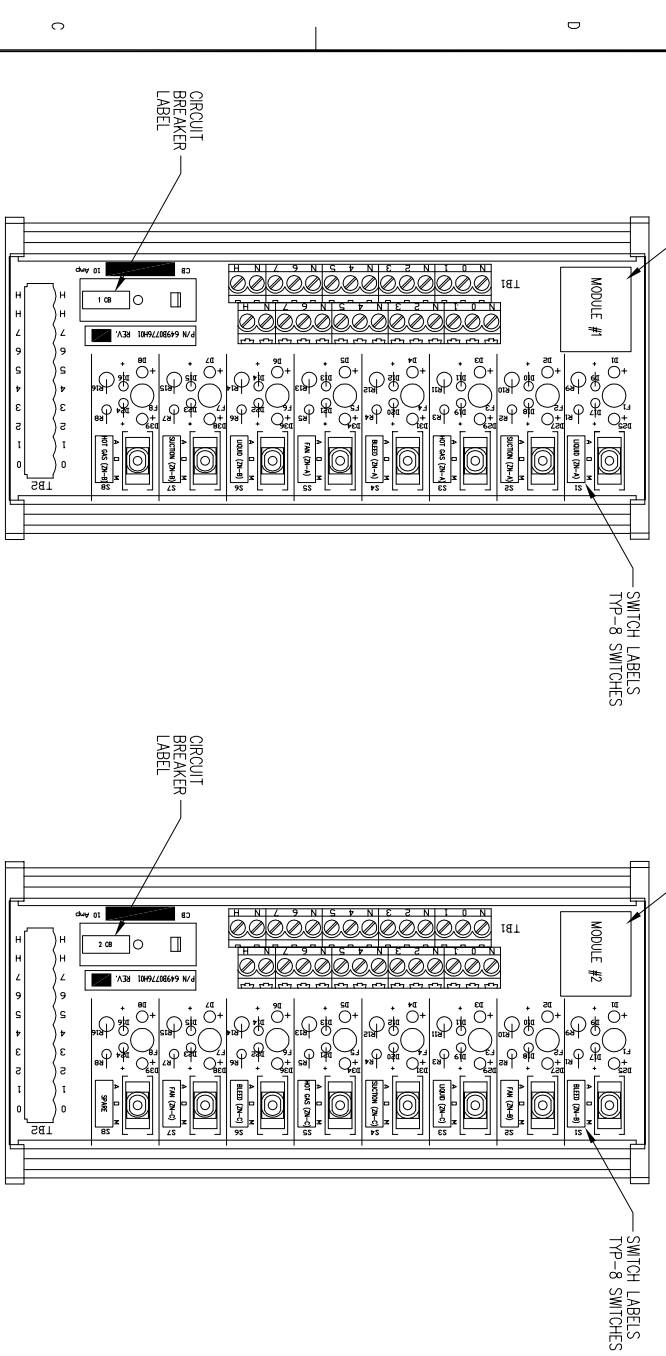


BACKPLANE OF ENCLOSURE WITH DOOR OPEN

INSIDE RIGHT PLANE OF ENCLOSURE



TERMINAL BLOCKS SCALE 1:1



| PURCHASER | | | | TITLE | | | |
|--|---------------|--------------|-------|-------------------------------|-----------|-----|--|
| FRICK ORD NO | | FRICK ORD NO | | DATE CODE | TIME NO | REV | |
| UNLESS OTHERWISE SPECIFIED DIMENSIONS ARE IN INCHES DO NOT SCALE | | | | 23587 | 643D00015 | E | |
| YORK INTERNATIONAL Refrigeration | | | | CONTROL CENTER ASSEMBLY | | | |
| York International Refrigeration - Frick | | | | THREE-ZONE EVAPORATOR CONTROL | | | |
| WYOMBORO, PA 17268 | | | | | | | |
| DEC 26 | DEC 31 | FRACKT | MM/YY | 9/01/06 | | | |
| ± .06 | ± .031 | ± 1/32 | ± 1/2 | 9/02/06 | | | |
| DR | L. STODOLSKER | | | 9/03/06 | | | |
| CHK | B. HESS | | | | | | |
| APPD | A. LOMG | | | | | | |
| SCALE 1:4 | | | | SHEET 1 OF 4 | | | |

UNLESS OTHERWISE SPECIFIED DIMENSIONS ARE IN INCHES DO NOT SCALE

NOTE TO PURCHASER: REFER TO CONTRACT FOR MATERIAL TO BE SUPPLIED BY FRICK COMPANY. THE AMOUNT OF SUCH MATERIAL IS NOT INCREASED BY ANYTHING SHOWN UPON THIS DRAWING.

YORK INTERNATIONAL Refrigeration - Frick WYOMBORO, PA 17268

CONTROL CENTER ASSEMBLY
THREE-ZONE EVAPORATOR CONTROL

DATE CODE: 23587
TIME NO: 643D00015

SCALE 1:4
SHEET 1 OF 4

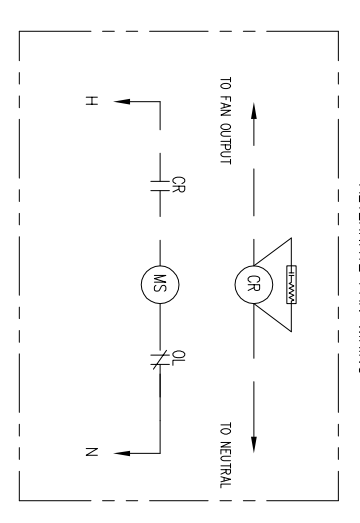
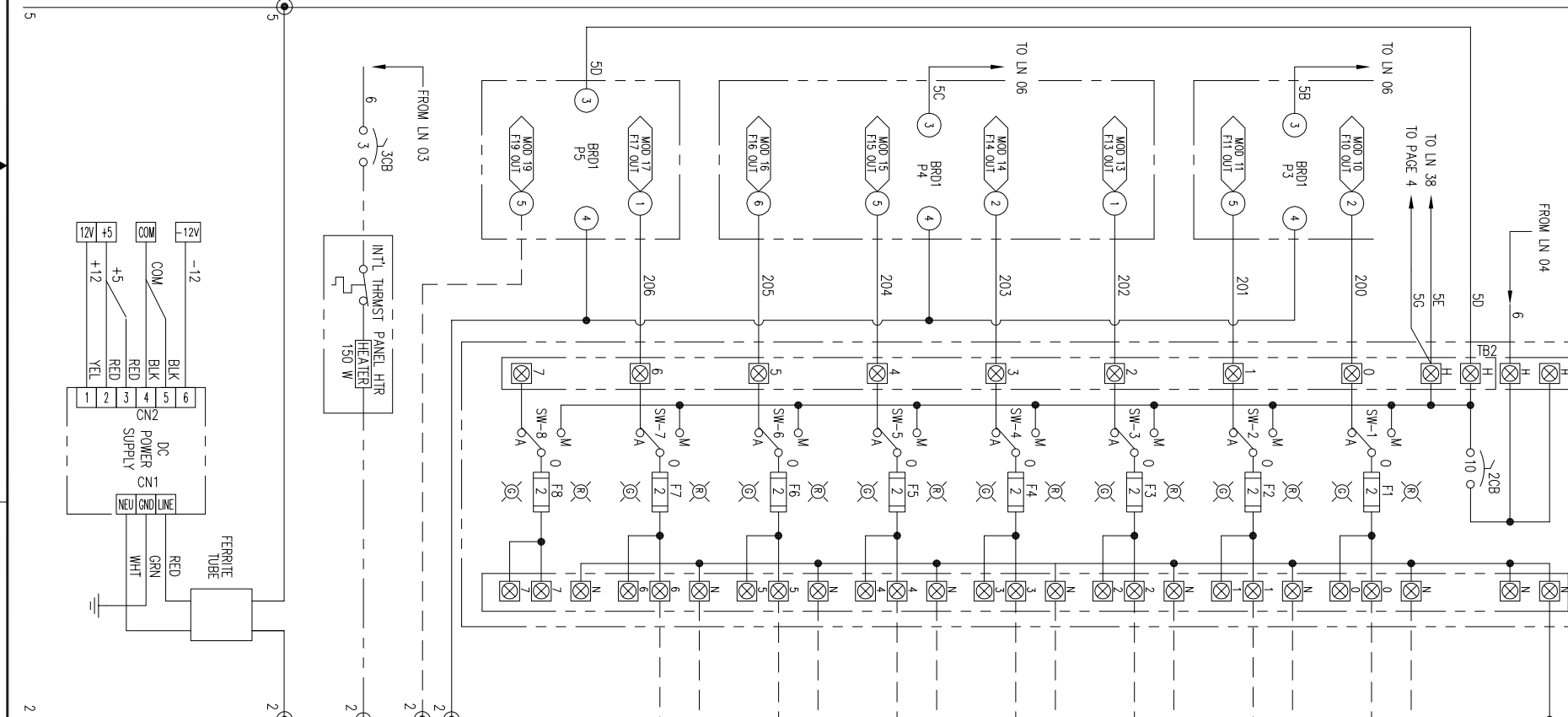
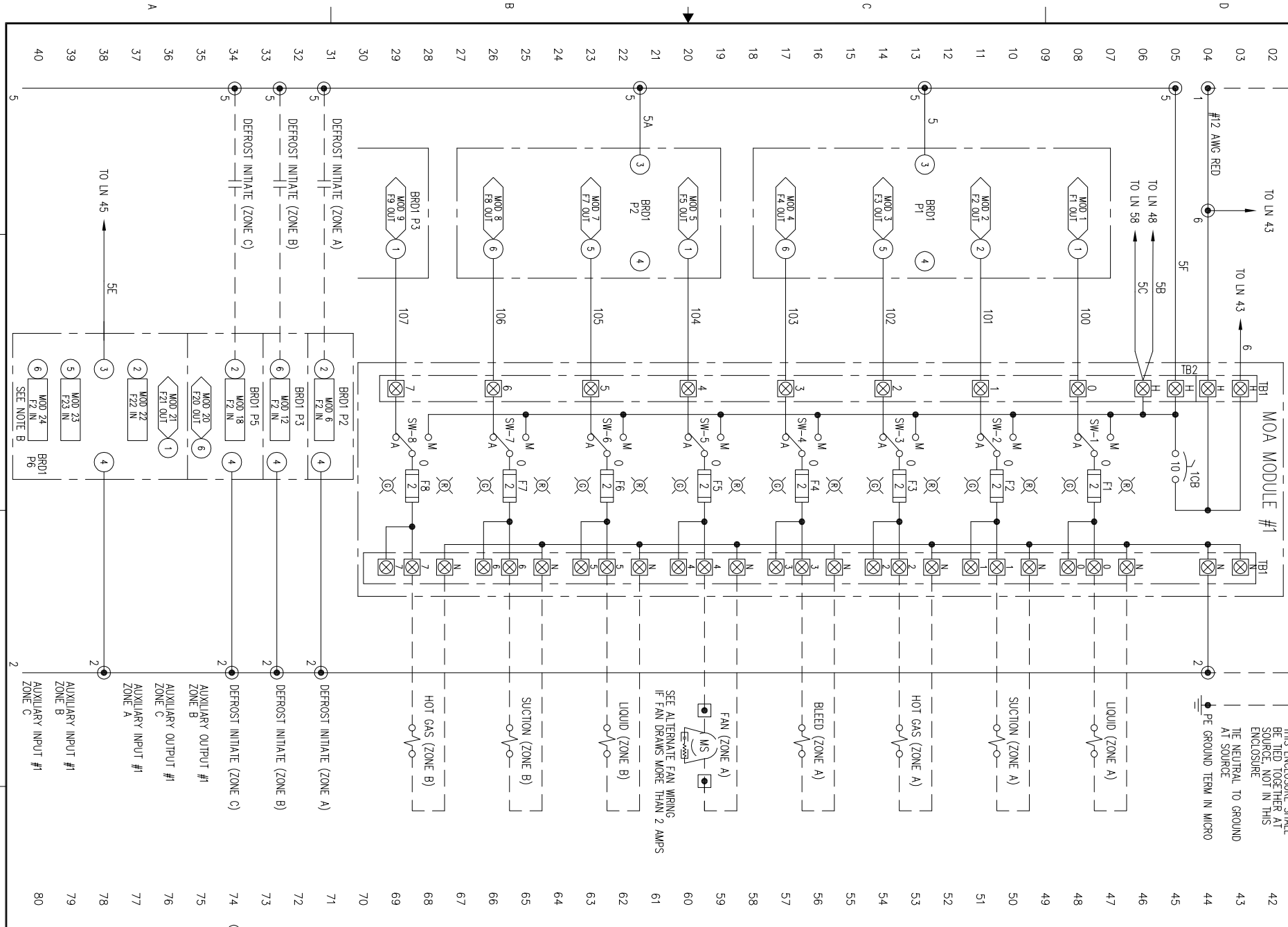
| REVISION HISTORY | | DATE | DR | CHK | CODE |
|------------------|-----|--|----------|-----|------|
| ZONE | REV | DESCRIPTION | 12/18/06 | JLS | BSH |
| A-4 | A | ADDED -12 WIRE TO THE POWER SUPPLY. | 07/13/07 | JAT | JLS |
| | D | UPDATED TERMINAL BLOCKS & REVISE ENCLOSURE | 07/26/07 | JAT | JLS |
| | E | UPDATED NOTES ON DRAWING | | JLS | JLS |

CUSTOMER SUPPLIED 120 VAC IS REQUIRED
 ALL POWER SOURCES SHALL BE GROUNDED ON ONE SIDE
 -ISOLATED AND SEPARATED FROM OTHER INDUCTION SUCH AS LIGHTING CIRCUITS
 -USE MINIMUM #12 AWG FOR FEED

EARTH BUSBAR AT POWER SOURCE

ALL NEUTRALS ENTERING THIS ENCLOSURE SHALL BE TIED TOGETHER AT SOURCE, NOT IN THIS ENCLOSURE
 THE NEUTRAL TO GROUND AT SOURCE

PE GROUND TERM IN MICRO



NOTE A:
 A SURGE SUPPRESSOR OR MOV TO BE INSTALLED ACROSS ALL INDUCTIVE LOADS IN CONTROL CENTER.

NOTE B:
 ALL INPUT MODULE VOLTAGE RATINGS MUST MATCH THE INCOMING POWER

SURGE SUPPRESSOR
 SUPPRESSOR SPECIFICATIONS:
 RC NETWORK CONSISTING OF A .1 MFD CAPACITOR, 600 VDC IN SERIES WITH A 47 OHM RESISTOR.
 USE ELECTRODE #R0203-5-6 OR EQUAL.

VARISTOR
 METAL OXIDE VARISTOR (MOV) SPECIFICATIONS:
 GE #M130LA10A OR EQUAL FOR 120 VOLTS

WIRING BY OTHERS - ALL WIRING ENTERING CONTROL CENTER (INCLUDING GROUND & NEUTRAL) TO BE #14 AWG STRANDED WIRES UNLESS SPECIFIED OTHERWISE.

TERMINALS ON BACKPLATE

TERMINALS IN MOTOR STARTER

NO THREE PHASE WIRING SHALL ENTER OR LEAVE PANEL OR BE RUN IN SAME CONDUIT AS ANY CONTROL WIRING ENTERING OR LEAVING PANEL

NO SINGLE PHASE OVER 300 VOLTS SHALL ENTER OR LEAVE PANEL

ALL WIRING TO BE #16 AWG

STRANDED WIRE UNLESS SPECIFIED OTHERWISE.

ALL NEUTRAL (EXP. 2 & 2A) WIRING TO BE WHITE UNLESS NOTED OTHERWISE

FOR INSTALLATION OF COMPUTER BOARDS AND ERRONS,
 SEE MIBB NO. 4.11.10.11

OPTIONAL:
 AUXILIARY OUTPUT #1

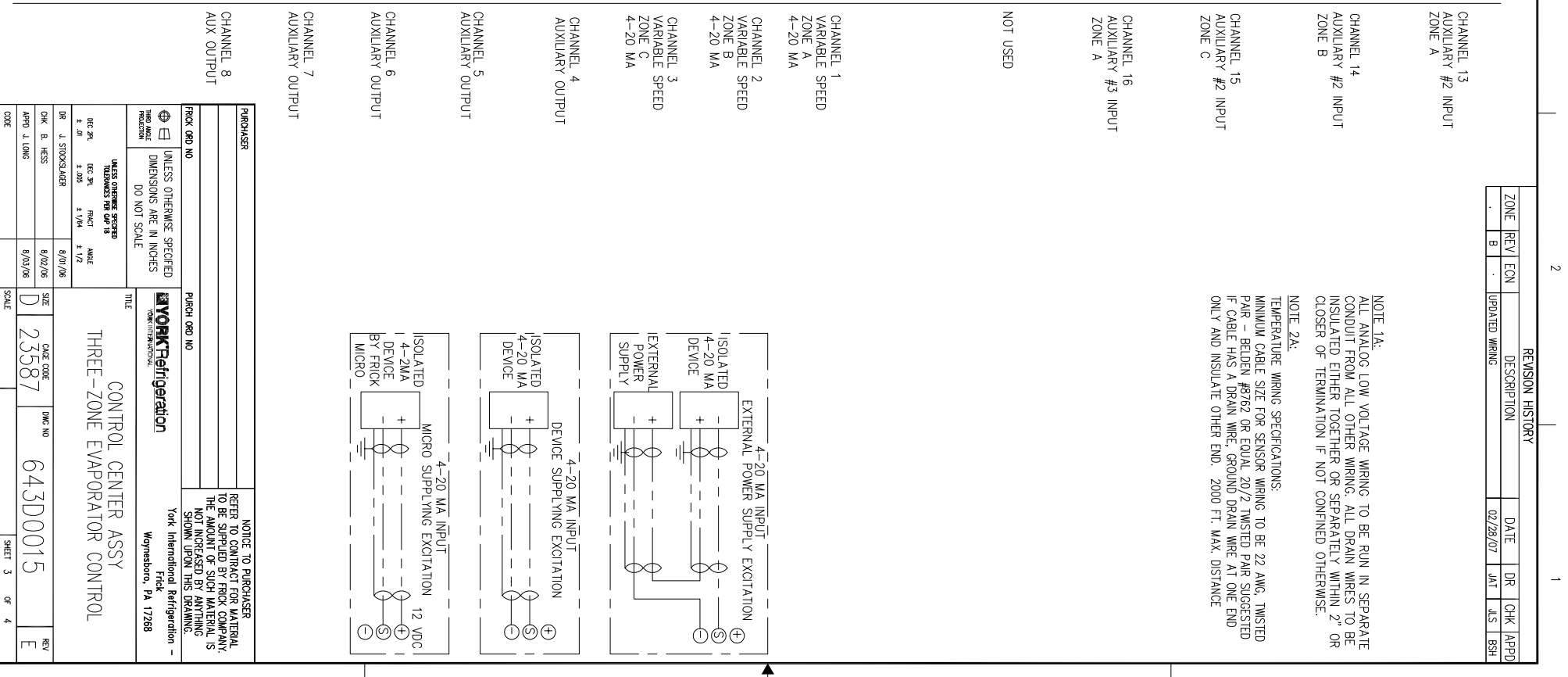
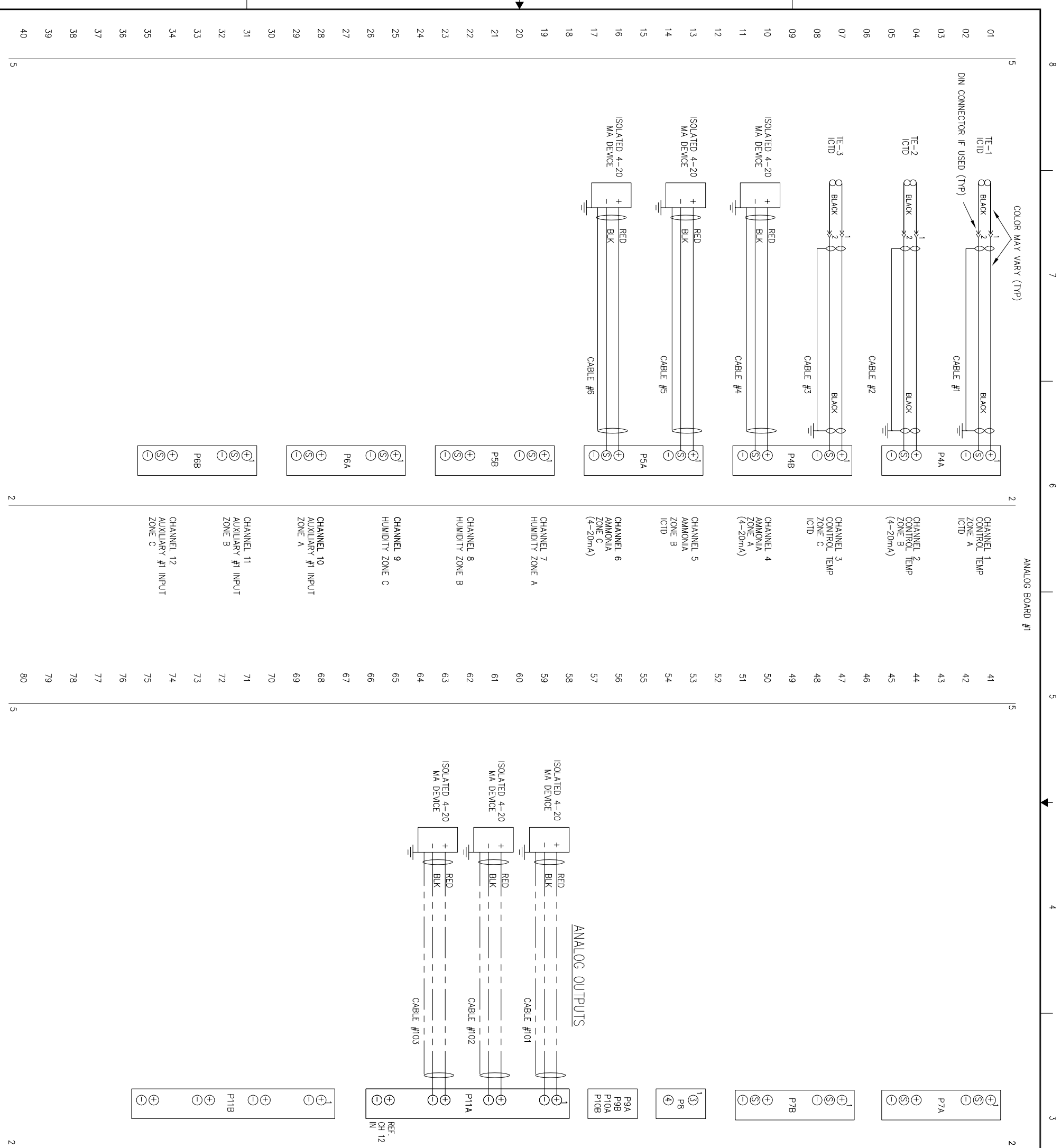
OPTIONAL:
 PANEL HEATER W/INTERNAL THERMOSTAT
 THERMOSTAT CLOSED AT 40°F±5,
 THERMOSTAT OPEN AT 55°F±5

| | | | |
|---|----------|--------------------------|--------------|
| UNLESS OTHERWISE SPECIFIED | | DIMENSIONS ARE IN INCHES | |
| DO NOT SCALE | | DO NOT SCALE | |
| UNITS | DECIMALS | FRAC | ANGLES |
| INCH | ±.06 | ±.031 | ±1/8 |
| FEET | ±.031 | ±.016 | ±1/2 |
| TOLERANCES PER ASME Y14.5 | | | |
| DATE | APPROVED | SCALE | BY |
| 8/20/06 | 8/20/06 | D | E |
| 8/23/06 | 8/23/06 | D | E |
| TITLE | | DATE CODE | DWG NO |
| CONTROL CENTER ASSY | | 23587 | 643D00015 |
| THREE-ZONE EVAPORATOR CONTROL | | SCALE | SHEET 2 OF 4 |
| | | | |
| York International Refrigeration - Frick Weyersboro, PA 17268 | | | |

| REVISION HISTORY | | | | | | | |
|------------------|-----|-----|----------------|----------|-----|------|------|
| ZONE | REV | ECN | DESCRIPTION | DATE | DR | CHK | APPD |
| B | | | UPDATED WIRING | 02/28/07 | JAT | J.S. | BSH |

NOTE 1A:
ALL ANALOG LOW VOLTAGE WIRING TO BE RUN IN SEPARATE CONDUIT FROM ALL OTHER WIRING. ALL DRAIN WIRES TO BE INSULATED EITHER TOGETHER OR SEPARATELY WITHIN 2" OR CLOSER OF TERMINATION IF NOT CONTAINED OTHERWISE.

NOTE 2A:
TEMPERATURE WIRING SPECIFICATIONS:
MINIMUM CABLE SIZE FOR SENSOR WIRING TO BE 22 AWG, TWISTED PAIR - BELDEN #8782 OR EQUAL 20/2 TWISTED PAIR SUGGESTED IF CABLE HAS A DRAIN WIRE. GROUND DRAIN WIRE AT ONE END ONLY AND INSULATE OTHER END. 2000 FT. MAX. DISTANCE



| | | | | | |
|--|----------------------|--------------------------------------|---|--|-----|
| PURCHASER | | YORK Refrigeration | | NOTICE TO PURCHASER | |
| FRICK ORD NO | | PURCH ORD NO | | REFERS TO CONTRACT FOR MATERIAL TO BE SUPPLIED BY FRICK COMPANY. THE AMOUNT OF SUCH MATERIAL IS NOT INCREASED BY ANYTHING SHOWN UPON THIS DRAWING. | |
| UNLESS OTHERWISE SPECIFIED DIMENSIONS ARE IN INCHES DO NOT SCALE | | YORK INTERNATIONAL York, PA 17268 | | York International Refrigeration - Frick Weyershoe, PA 17268 | |
| UNITS DIMENSIONS SPECIFIED TOLERANCES PER ASME B18.2 | | TITLE | | DRAWING NO | |
| DEC 26' ± .01 | DEC 30' FRACT ± 1/64 | CONTROL CENTER ASSY | | 643D00015 | |
| DEC 26' ± .01 | DEC 30' FRACT ± 1/32 | THREE-ZONE EVAPORATOR CONTROL | | 23587 | |
| DR. L. STOKSLER | 9/01/06 | SIZE | D | DATE CODE | REV |
| CHK. B. HESS | 8/02/06 | SCALE | D | 23587 | E |
| APPD. L. LUNG | 8/03/06 | | | | |

| REVISION HISTORY | | | | | | | |
|------------------|-----|-----|--|----------|-----|-----|------|
| ZONE | REV | ECN | DESCRIPTION | DATE | DR | CHK | APPD |
| . | D | . | UPDATED TERM BLOCKS & REVISE ENCLOSURE | 07/13/07 | JMT | ALS | JLS |

NOTE A:
 A SURGE SUPPRESSOR OR MOV TO BE INSTALLED ACROSS ALL INDUCTIVE LOADS IN CONTROL CENTER.
 SUPPRESSOR SPECIFICATIONS:
 RC NETWORK CONSISTING OF A 1 MFD CAPACITOR, 600 VDC IN SERIES WITH A 47 OHM RESISTOR.
 USE ELECTRODE #R6203-5-6 OR EQUAL.
 VARISTOR
 METAL OXIDE VARISTOR (MOV) SPECIFICATIONS:
 CE #M30L10A OR EQUAL FOR 115 VOLTS
 CE #W250L10A OR EQUAL FOR 230 VOLTS

24VDC POWER SUPPLY OPTION
 24VDC @ 2.7A MAX
 ** CE NOTES: EVERY "2" WILL BE AN "N" FOR NEUTRAL.

FOR HIGH POT TEST PROCEDURE, SEE MMB NO. 4.11:10.7
 FOR QUANTUM ASSEMBLY AND TEST PROCEDURE, SEE MMB NO. 4.11:10.14

- INDICATES DEVICES SUPPLIED ONLY
- - - - - WIRING BY OTHERS - ALL WIRING ENTERING CONTROL CENTER (INCLUDING GROUND & NEUTRAL) TO BE #14 AWG STRANDED WIRES UNLESS SPECIFIED OTHERWISE.
- ☐ REPRESENTS STARTER TERMINALS WHEN SUPPLIED BY FRICK
- TERMINALS IN CONTROL CENTER
- TERMINALS IN JUNCTION BOXES FOR SPLIT SKID UNITS
- REPRESENTS TERMINALS IN JUNCT BOX ON COMPRESSOR SKID APPLICABLE ONLY IF REQUIRED
- ⚠ REPRESENTS TERMINALS IN JUNCT BOX ON SEPARATOR SKID

NO THREE PHASE WIRING SHALL ENTER OR LEAVE QUANTUM PANEL OR BE RUN IN SAME CONDUIT AS ANY QUANTUM CONTROL WIRING ENTERING OR LEAVING MICRO PANEL
 NO SINGLE PHASE OVER 300 VOLTS SHALL ENTER OR LEAVE QUANTUM PANEL
 ALL CONTROL CENTER WIRING TO BE #16 AWG STRANDED WIRE UNLESS SPECIFIED OTHERWISE.

| | | | |
|---|---------------------------|--|-----------|
| PURCHASER | | NOTICE TO PURCHASER REFER TO CONTRACT FOR MATERIAL TO BE SUPPLIED BY FRICK COMPANY. THE AMOUNT OF SUCH MATERIAL IS NOT INCREASED BY ANYTHING SHOWN UPON THIS DRAWING. | |
| FRICK ORD NO | PURCH ORD NO | York International Refrigeration - Frick Wynnebboro, PA 17268 | |
| DIMENSIONS SPECIFIED UNLESS OTHERWISE SPECIFIED DIMENSIONS ARE IN INCHES DO NOT SCALE | | | |
| UNITS: DIMENSIONS SPECIFIED | TOLERANCES PER ASME Y14.5 | TITLE CONTROL CENTER ASSY THREE-ZONE EVAPORATOR CONTROL | |
| DEC 2K ± .01 | DEC 3K FRACT ± .1/32 | DATE CODE | DWG NO |
| DR. L. STOKSLAGER | 9/01/06 | D 23587 | 643D00015 |
| CHK. B. HESS | 8/02/06 | SCALE | REV |
| APPD. L. LOM | 8/03/06 | | E |

