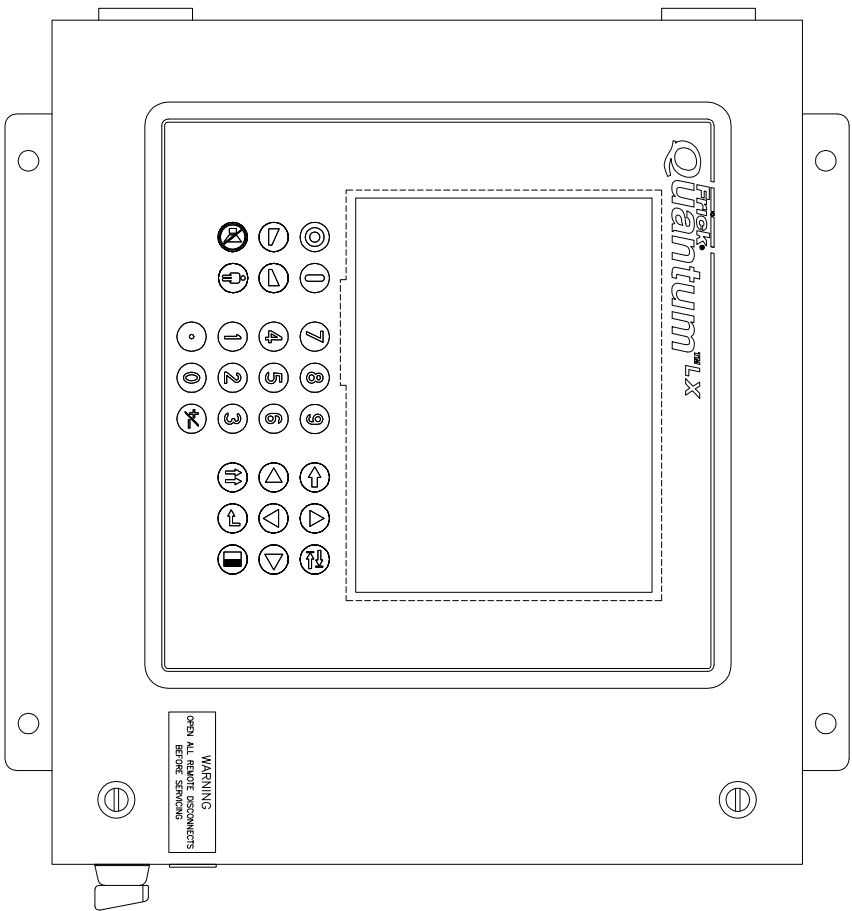
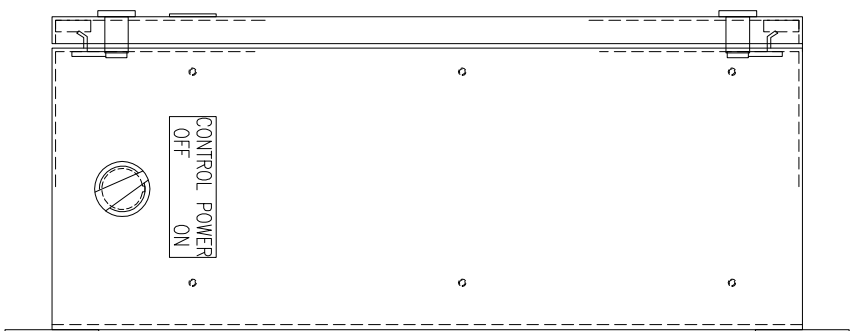


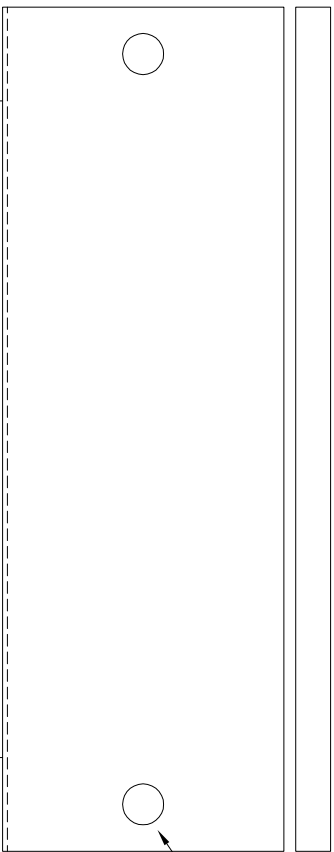
LEFT SIDE



FRONT VIEW OF PANEL



RIGHT SIDE



BOTTOM VIEW

INSTALL HOLE SEALS-HOFFMAN #A-SC60 1/2" CONDUIT IN ALL OPEN CONDUIT HOLES.
CUSTOMER'S VDC CONNECTIONS ARE 1/2 CONDUIT. THEY MAY BE PUNCHED LARGER IF REQUIRED PLUG AT PANEL ASSEMBLY

UNLESS OTHERWISE SPECIFIED DIMENSIONS ARE IN INCHES DO NOT SCALE			
DEC 2PL # 0.01	DEC 3PL # 0.005	FRACT # 1/64	ANGLE # 1/2°
DR B. HESS	11/13/06		
CHK J. STOCKLAGER	11/14/06		
APPD J. LONG	11/14/06		
CODE			

TITLE WIRING DIAGRAM & CNTL PNL INTERFACE ASSY QLX, EVAP, NH, GENERIC			
SIZE D	CAGE CODE 23587	DWG NO 643D0014	REV A
SCALE 1:4	SHEET 01 OF 03		

REVISIONS					
REV	ECN	DESCRIPTION	DATE	DR	APP
A		ADDED NOTES TO DRAWING	07/13/07	JAT	BS

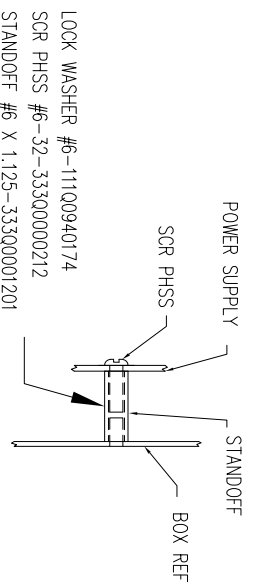
PURCHASER		NOTICE TO PURCHASER REFER TO CONTRACT FOR MATERIAL TO BE SUPPLIED BY YORK/JCI. THE AMOUNT OF SUCH MATERIAL IS NOT INCREASED BY ANYTHING SHOWN UPON THIS DRAWING.
YORK ORD NO		
PURCH ORD NO		

THIS DRAWING AND THE SUBJECT MATTER IT CONTAINS, ARE PROPERTY OF FRICK-A JOHNSON CONTROLS COMPANY. IT MAY NOT BE USED, NOR COPIED FOR DISTRIBUTION, BEYOND THE REQUIREMENTS OF THE PROJECT REFERENCED ON THIS DRAWING.

© COPYRIGHT 11/13/06,FRICK/JCI, ALL RIGHTS RESERVED

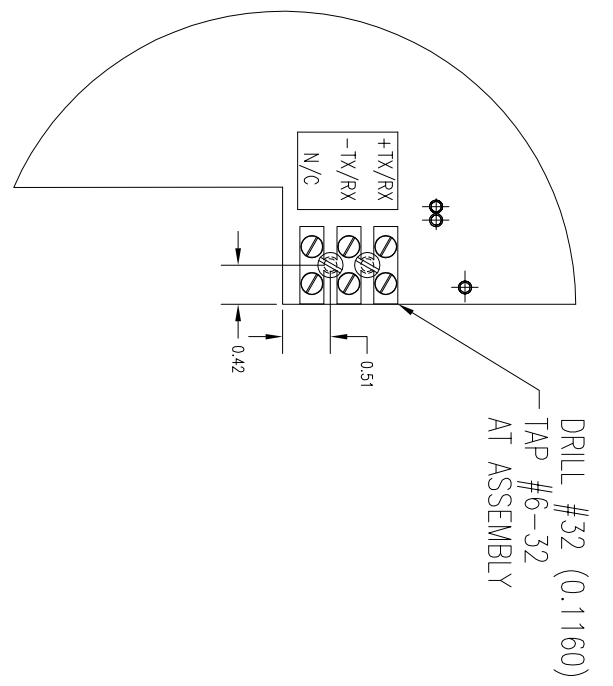
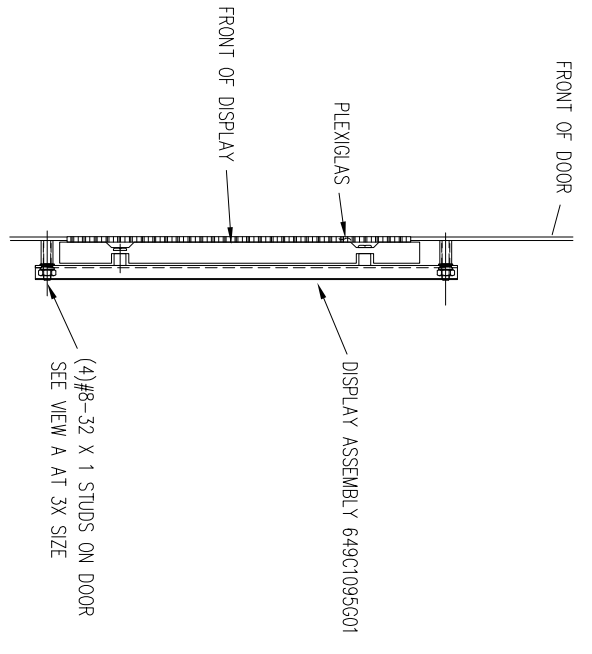
Frick
A JOHNSON CONTROLS COMPANY

100 CV AVE
P.O. BOX 997
Waynesboro, PA 17268



LOCK WASHER #6-11100940174
SCR PHSS #6-32-33300000212
STANDOFF #6 X 1.125-33300001201

POWER SUPPLY MOUNTING



DISPLAY ASSEMBLED VIEW

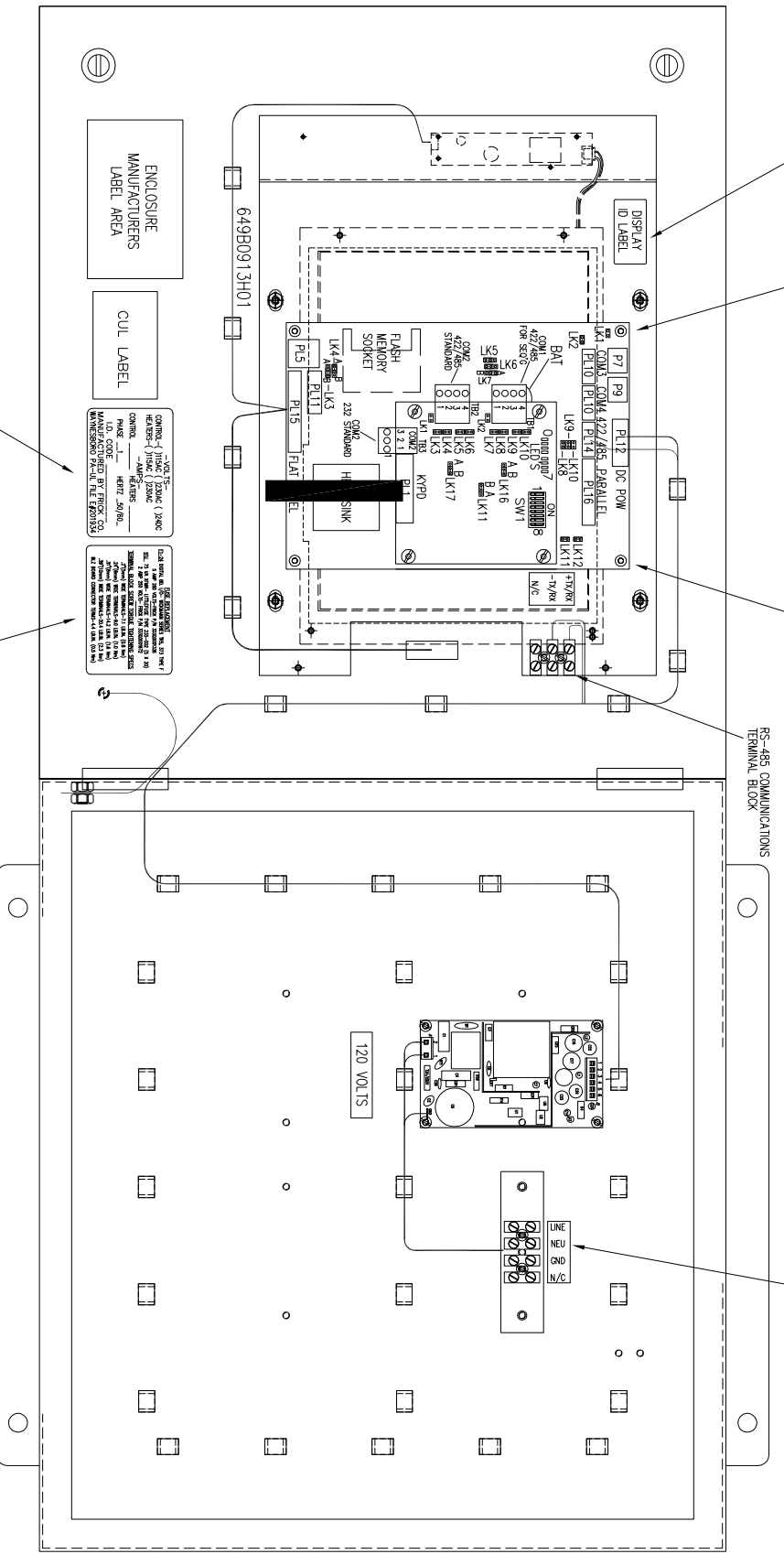
TERMINAL STRIP INSTALLATION
DISPLAY PLATE

SHARP OUTDOOR DISPLAY ASSEMBLY-ORDER 649C124G01 INCLUDES DISPLAY & MOUNTING PLATE-ORDER INVERTER SEPARATELY P/N 33300001201

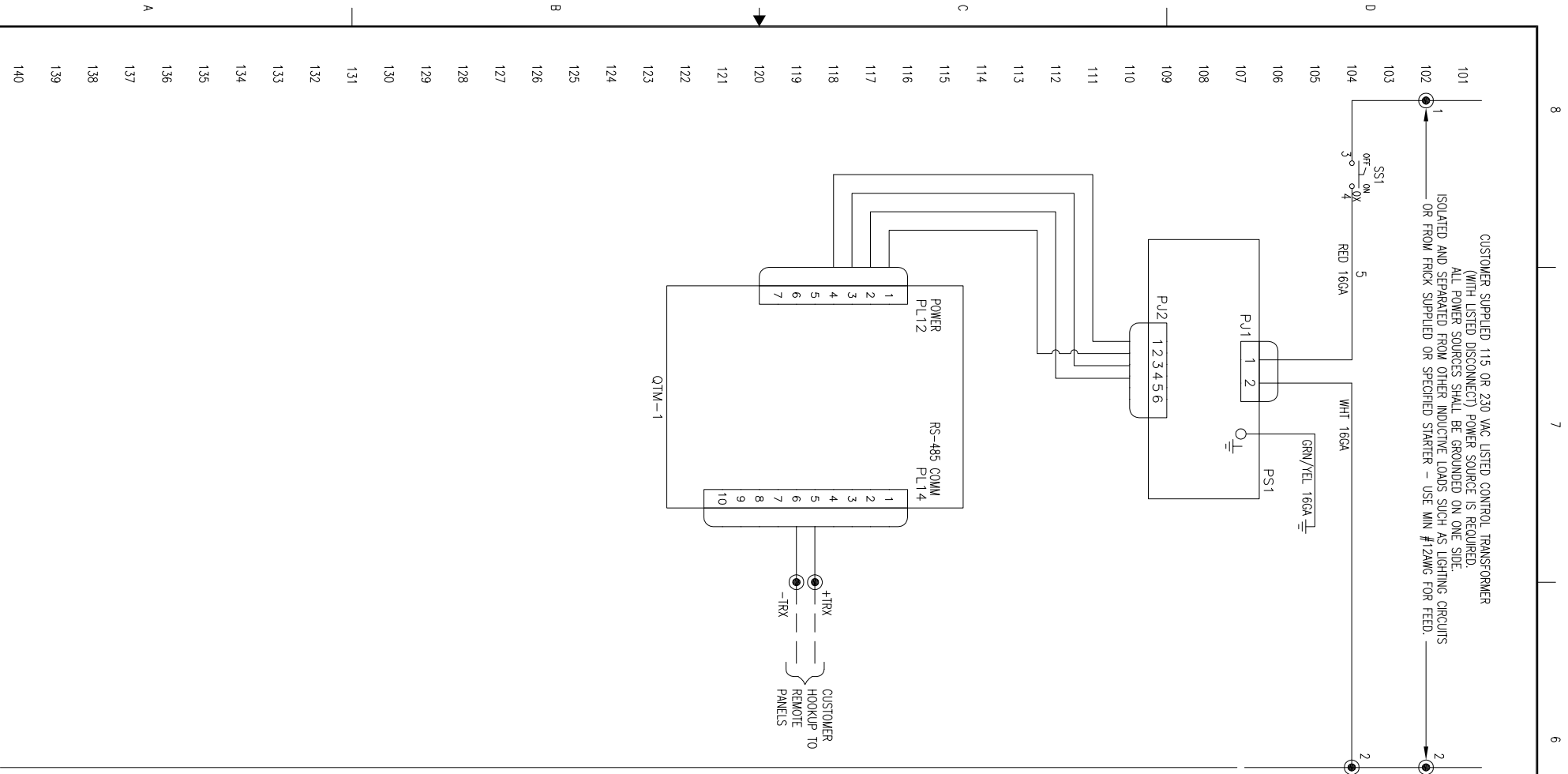
SHARP DISPLAY ASSEMBLY-ORDER 649C124G01 INCLUDES DISPLAY & MOUNTING PLATE-ORDER INVERTER SEPARATELY P/N 33300001201

APPLY CORRECT LABEL

3-#4 NYLON INSERT NUTS
1-#4 x 1/2" NYLON NUT



<p>UNLESS OTHERWISE SPECIFIED DIMENSIONS ARE IN INCHES DO NOT SCALE</p> <p>UNLESS OTHERWISE SPECIFIED TOLERANCES PER ASME Y14.5</p> <table border="1"> <tr> <th>DEC 2PL</th> <th>DEC 3PL</th> <th>FRACT</th> <th>ANGLE</th> </tr> <tr> <td># 0.01</td> <td># 0.005</td> <td># 1/64</td> <td># 1/2°</td> </tr> </table>		DEC 2PL	DEC 3PL	FRACT	ANGLE	# 0.01	# 0.005	# 1/64	# 1/2°	<p>TITLE</p> <p>WIRING DIAGRAM & CNTL PNL INTERFACE ASSY QLX, EVAP, NH, GENERIC</p>		<p>DR B. HESS 11/13/06</p> <p>CHK J. STOCKSLAGER 11/14/06</p> <p>APPD J. LONG 11/14/06</p>	
DEC 2PL	DEC 3PL	FRACT	ANGLE										
# 0.01	# 0.005	# 1/64	# 1/2°										
<p>UNLESS OTHERWISE SPECIFIED PURCHASER</p> <p>SIZE D CAGE CODE 23587 DWG NO 643D0014 REV A</p>		<p>SCALE 1:2 SHEET 02 OF 03</p>		<p>NOTICE TO PURCHASER REFER TO CONTRACT FOR MATERIAL TO BE SUPPLIED BY YORK/JCI. THE AMOUNT OF SUCH MATERIAL IS NOT INCREASED BY ANYTHING SHOWN UPON THIS DRAWING.</p>									
<p>UNLESS OTHERWISE SPECIFIED</p>		<p>YORK ORD NO PURCH ORD NO</p>		<p>THIS DRAWING AND THE SUBJECT MATTER IT CONTAINS, ARE PROPERTY OF FRICK-A JOHNSON CONTROLS COMPANY. IT MAY NOT BE USED, NOR COPIED FOR DISTRIBUTION, BEYOND THE REQUIREMENTS OF THE PROJECT REFERENCED ON THIS DRAWING.</p> <p>© COPYRIGHT 11/13/06,FRICK/JCI, ALL RIGHTS RESERVED</p> <p>Frick A JOHNSON CONTROLS COMPANY</p> <p>100 CV AVE P.O. BOX 997 Waynesboro, PA 17268</p>									



101 CUSTOMER SUPPLIED 115 OR 230 VAC LISTED CONTROL TRANSFORMER
 (WITH LISTED DISCONNECT) POWER SOURCE IS REQUIRED.
 102 ALL POWER SOURCES SHALL BE GROUNDED ON ONE SIDE.
 103 ISOLATED AND SEPARATED FROM OTHER INDUCTIVE LOADS SUCH AS LIGHTING CIRCUITS
 104 OR FROM FRICK SUPPLIED OR SPECIFIED STARTER - USE MIN #12AWG FOR FEED.

105 CONTROL POWER

106 CONDOR

107 90-264 VAC, 47-63 HZ
 25W TOTAL

108 ARCOM
 QUANTUM_BOARD

109 QTM-1

110 POWER PL12

111 RS-485 COMM PL14

112 +TRX

113 -TRX

114 CUSTOMER
 HOOKUP TO
 REMOTE
 PANELS

INDICATES DEVICES WIRED AT FACTORY

INDICATES DEVICES SUPPLIED BY FACTORY OR OTHERS WHEN OPTIONAL OR REQUIRED.

INDICATES DEVICES WIRING BY OTHERS - ALL WIRING ENTERING CONTROL CENTER (INCLUDING GROUND & NEUTRAL) TO BE #14AWG STRANDED WIRES UNLESS SPECIFIED OTHERWISE.

REPRESENTS TERMINALS IN QUANTUM CONTROL PANEL

NO THREE PHASE WIRING SHALL ENTER OR LEAVE QUANTUM PANEL OR BE RUN IN SAME CONDUIT AS ANY QUANTUM CONTROL WIRING ENTERING OR LEAVING QUANTUM CONTROL PANEL.

NO SINGLE PHASE OVER 300VAC SHALL ENTER OR LEAVE QUANTUM PANEL

ALL QUANTUM WIRING TO BE #14 AWG STRANDED WIRE UNLESS OTHERWISE STATED


ALL NEUTRAL (EXP- 2 & 2A) WIRING TO BE WHITE UNLESS OTHERWISE STATED

FOR INSTALLATION OF QUANTUM PACKAGE TEST PROCEDURE SEE MMB NO. 4.11.10.12

FOR INSTALLATION OF COMPUTER BOARDS & EPPROMS SEE MMB NO. 4.11.10.11

FOR HIGH POT TEST PROCEDURE SEE MMB NO. 4.11.10.7

FOR QUANTUM ASSEMBLY AND TEST PROCEDURE SEE MMB NO. 4.11.10.14

UNLESS OTHERWISE SPECIFIED DIMENSIONS ARE IN INCHES DO NOT SCALE		TITLE WIRING DIAGRAM & CNTL PNL INTERFACE ASSY QLX, EVAP, NH, GENERIC		THIS DRAWING AND THE SUBJECT MATTER IT CONTAINS, ARE PROPERTY OF FRICK-A JOHNSON CONTROLS COMPANY. IT MAY NOT BE USED, NOR COPIED FOR DISTRIBUTION, BEYOND THE REQUIREMENTS OF THE PROJECT REFERENCED ON THIS DRAWING.	
UNLESS OTHERWISE SPECIFIED TOLERANCES FOR QIP IS		PURCHASER		© COPYRIGHT 11/13/06,FRICK/JCI, ALL RIGHTS RESERVED	
DEC 2PL # 0.01	DEC 3PL # 0.005	FRACT # 1/64	ANGLE # 1/2"	NOTICE TO PURCHASER REFER TO CONTRACT FOR MATERIAL TO BE SUPPLIED BY YORK/JCI. THE AMOUNT OF SUCH MATERIAL IS NOT INCREASED BY ANYTHING SHOWN UPON THIS DRAWING.	
DR B. HESS	11/13/06	SIZE D	CAGE CODE 23587	DWG NO 643D0014	REV A
CHK J. STOCKSLAGER	11/14/06	SCALE NONE	SHEET 03 OF 03		YORK ORD NO PURCH ORD NO
APPD J. LONG	11/14/06				
				100 CV AVE P.O. BOX 997 Waynesboro, PA 17268	